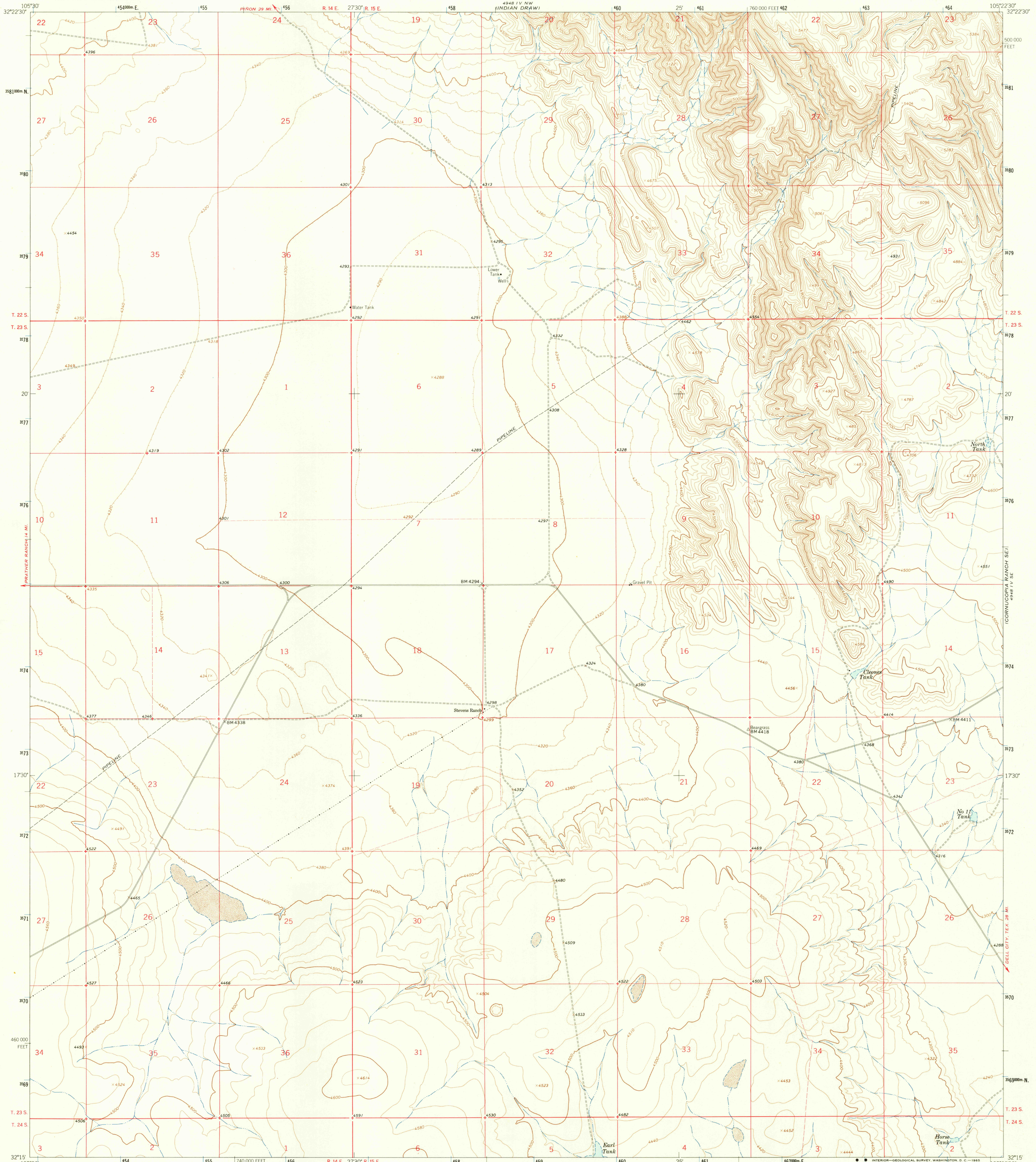
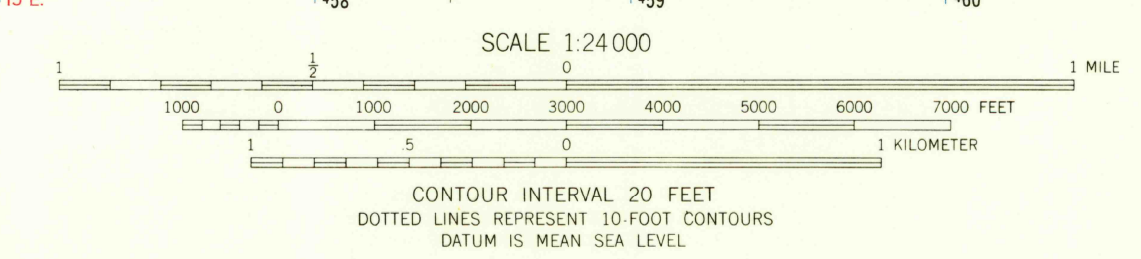
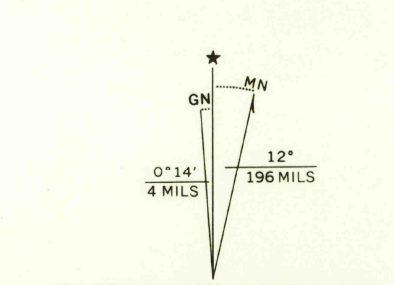


FILE 11, N. M.  
CORNUCOPIA RANCH



ALAMO RANCH (TAIN)  
162,000

Mapped, edited, and published by the Geological Survey  
Control by USGS and USC&GS  
Topography by photogrammetric methods from aerial photographs taken 1962. Field checked 1963  
Polyconic projection. 1927 North American datum  
10,000-foot grid based on New Mexico coordinate system, central zone  
1000-meter Universal Transverse Mercator grid ticks, zone 13, shown in blue  
Fine red dashed lines indicate selected fence lines



USGS  
Historical File  
Topographic Division



ROAD CLASSIFICATION  
Light-duty ——— Unimproved dirt - - - - -

U.S.G.S.  
FILE COPY  
TOPOGRAPHIC DIVISION

CLEONES TANK, N. MEX.  
N3215-W10522.5/7.5  
1963  
AMS 4948 IV SW - SERIES V881

THIS MAP COMPLIES WITH NATIONAL MAP ACCURACY STANDARDS  
FOR SALE BY U.S. GEOLOGICAL SURVEY, DENVER, COLORADO 80225, OR WASHINGTON, D. C. 20242  
A FOLDER DESCRIBING TOPOGRAPHIC MAPS AND SYMBOLS IS AVAILABLE ON REQUEST

DEC 17 1965  
2210