

Mapped, edited, and published by the Geological Survey

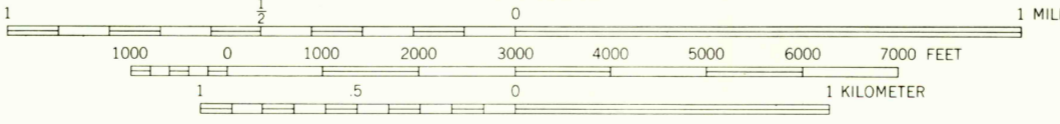
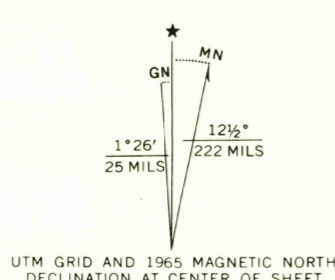
Control by USGS and USC&GS

Topography by photogrammetric methods from aerial photographs taken 1962 and planimeter surveys 1965

Polyconic projection, 1927 North American datum  
10,000-foot grid based on New Mexico coordinate system, west zone  
1000-meter Universal Transverse Mercator grid ticks, zone 13, shown in blue

Red tint indicates areas in which only landmark buildings are shown

Fine red dashed lines indicate selected fence lines



CONTOUR INTERVAL 10 FEET  
DATUM IS MEAN SEA LEVEL

USGS  
Historical File  
Topographic Division



ROAD CLASSIFICATION	
Heavy-duty	Light-duty
Medium-duty	Unimproved dirt
U.S. Route	State Route

U.S.G.S.  
FILE COPY  
TOPOGRAPHIC DIVISION

DEMING EAST, N. MEX.

N3215-W10737.5/7.5

1965

AMS 4448 | SW-SERIES V881

THIS MAP COMPLIES WITH NATIONAL MAP ACCURACY STANDARDS  
FOR SALE BY U. S. GEOLOGICAL SURVEY, DENVER, COLORADO 80225, OR WASHINGTON, D. C. 20242  
A FOLDER DESCRIBING TOPOGRAPHIC MAPS AND SYMBOLS IS AVAILABLE ON REQUEST

*Return 2/11/67 wrong not screen*