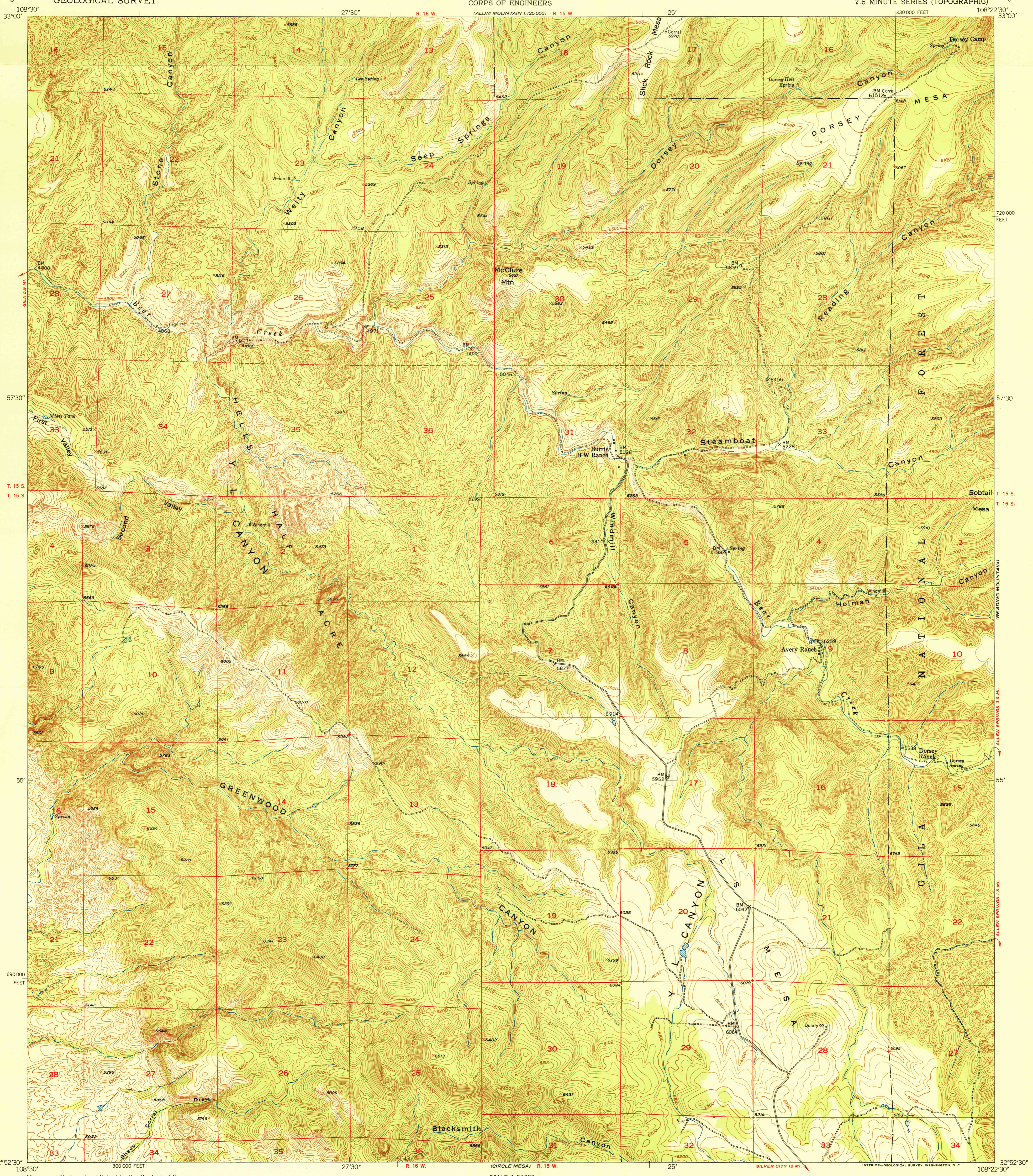


U. S. G. S.  
**FILE COPY**  
Inspection and Mating

UNITED STATES  
DEPARTMENT OF THE INTERIOR  
GEOLOGICAL SURVEY

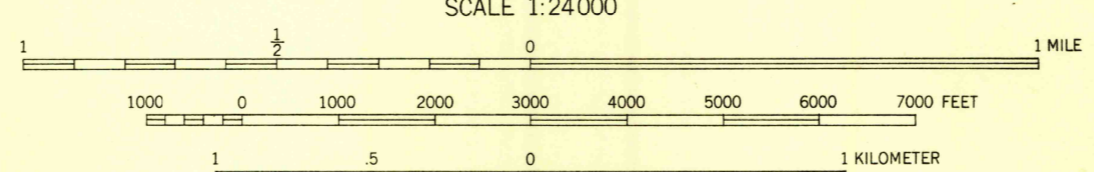
UNITED STATES  
DEPARTMENT OF THE ARMY  
CORPS OF ENGINEERS

DORSEY RANCH QUADRANGLE  
NEW MEXICO-GRANT CO.  
7.5 MINUTE SERIES (TOPOGRAPHIC)



Mapped, edited, and published by the Geological Survey  
Control by USGS and USC&GS  
Topography from aerial photographs by multiplex methods  
Aerial photographs taken November 1945. Field check  
1949-1950  
Polyconic projection. 1927 North American datum  
10,000-foot grid based on New Mexico coordinate system,  
west zone  
Dashed land lines indicate approximate location

APPROXIMATE MEAN  
DECLINATION, 1950



CONTOUR INTERVAL 20 FEET  
DATUM IS MEAN SEA LEVEL

THIS MAP COMPLIES WITH NATIONAL MAP ACCURACY STANDARDS  
FOR SALE BY U. S. GEOLOGICAL SURVEY, FEDERAL CENTER, DENVER, COLORADO OR WASHINGTON 25, D. C.  
A FOLDER DESCRIBING TOPOGRAPHIC MAPS AND SYMBOLS IS AVAILABLE ON REQUEST

USGS  
Historical File  
Topographic Division

ROAD CLASSIFICATION  
Heavy-duty... **2 LANE** **2 LANE** Light-duty...  
Medium-duty... **2 LANE** **2 LANE** Unimproved dirt...  
U. S. Route State Route

DORSEY RANCH, N. MEX.  
N3252.5-W10822.5/7.5

EDITION OF 1951

U. S. G. S.  
**FILE COPY**  
Inspection and Mating