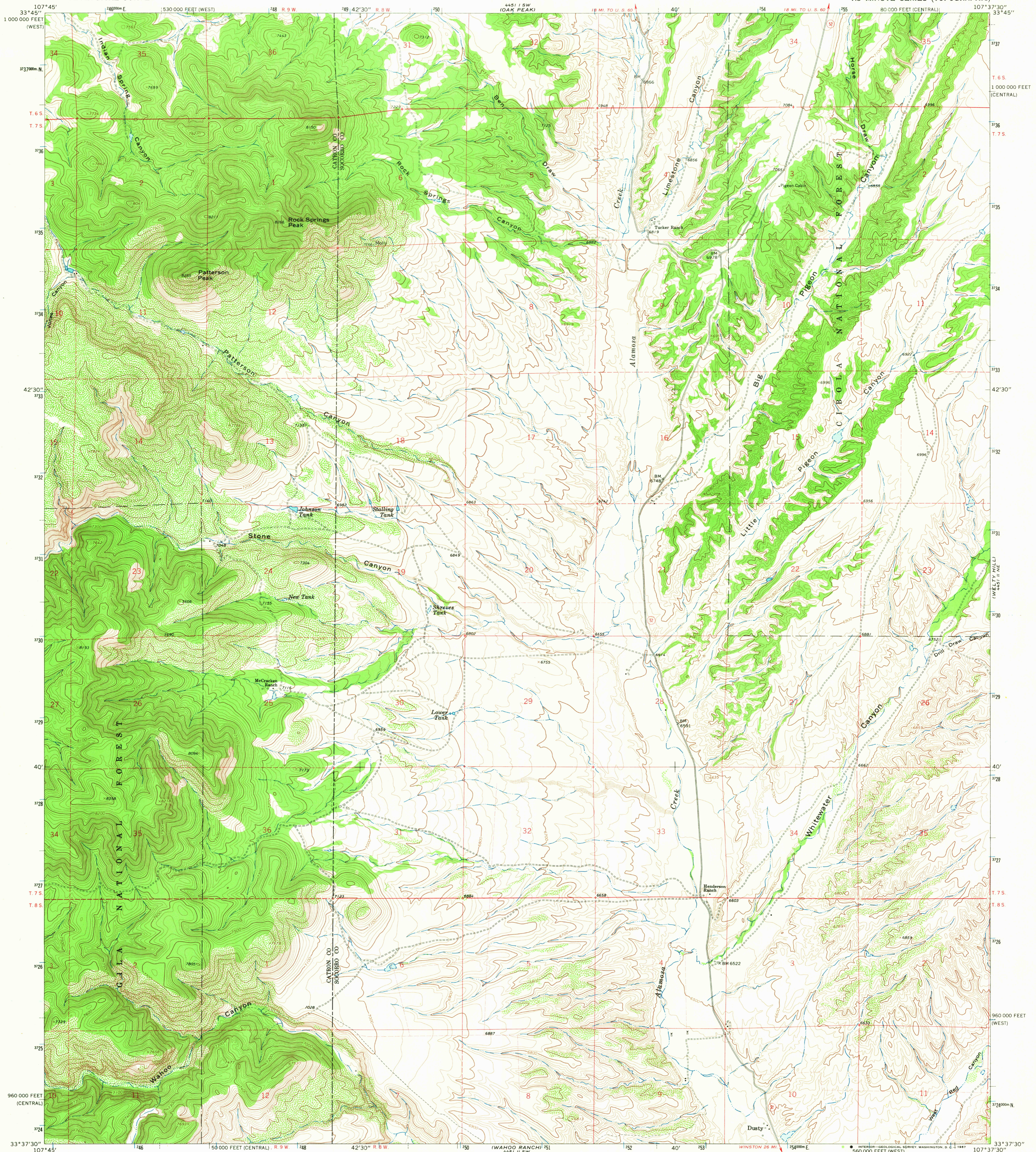
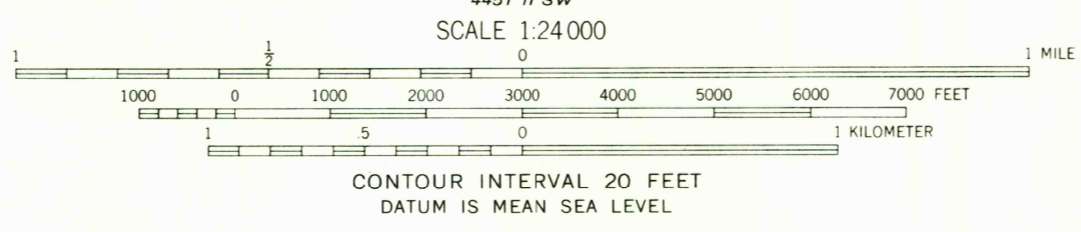
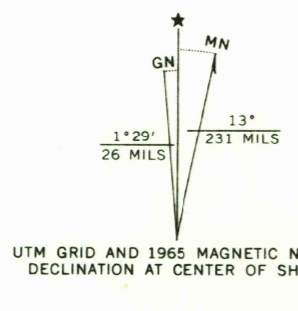


UNITED STATES
DEPARTMENT OF THE INTERIOR
GEOLOGICAL SURVEY

DUSTY QUADRANGLE
NEW MEXICO
7.5 MINUTE SERIES (TOPOGRAPHIC)



Mapped by the U. S. Forest Service
Edited and published by the Geological Survey
Control by USGS, USC&GS, and U. S. Forest Service
Topography by photogrammetric methods from aerial
photographs taken 1960. Field checked 1965
Polyconic projection. 1927 North American datum
10,000-foot grids based on New Mexico coordinate system,
central and west zones
1000-meter Universal Transverse Mercator grid ticks,
zone 13, shown in blue
Fine red dashed lines indicate selected fence lines



THIS MAP COMPLIES WITH NATIONAL MAP ACCURACY STANDARDS
FOR SALE BY U. S. GEOLOGICAL SURVEY, DENVER, COLORADO 80225, WASHINGTON, D. C. 20242
A FOLDER DESCRIBING TOPOGRAPHIC MAPS AND SYMBOLS IS AVAILABLE ON REQUEST

USGS
TOPOGRAPHIC DIVISION
FILE COPY

USGS
Historical File
Topographic Division

ROAD CLASSIFICATION
Light-duty ——— Unimproved dirt ———
State Route ———

DUSTY, N. MEX.
N3337.5-W10737.5/7.5

1965
AMS 4451 II NW-SERIES V881

2830
NOV 17 1967