

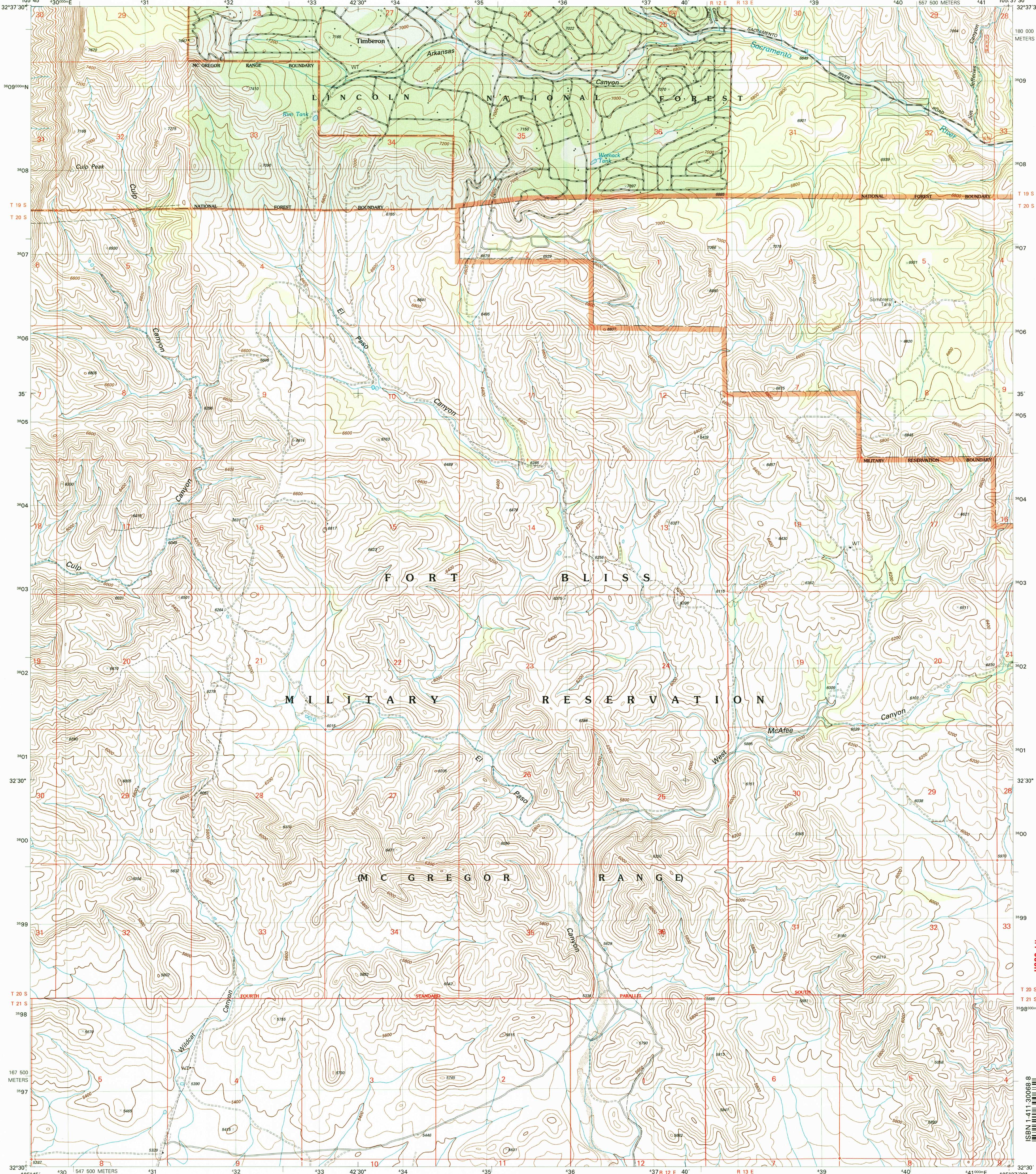


U.S. DEPARTMENT OF THE INTERIOR
U.S. GEOLOGICAL SURVEY

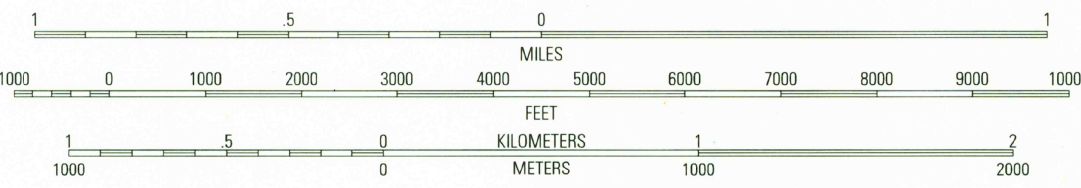
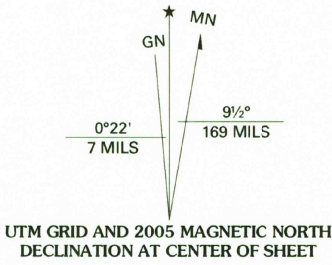


U.S. DEPARTMENT OF AGRICULTURE
FOREST SERVICE

EL PASO CANYON QUADRANGLE
NEW MEXICO-OTERO CO.
7.5-MINUTE SERIES (TOPOGRAPHIC)



Produced by the United States Geological Survey 1965
Revision by USDA Forest Service 2004
Topography compiled 1964. Planimetry derived from imagery taken 1999 and other sources. Public Land Survey System and survey control current as of 2004. Boundaries current as of 2004.
North American Datum of 1983 (NAD 83). Projection and 1 000-meter grid: Universal Transverse Mercator, zone 13
2 500-meter ticks: New Mexico Coordinate System (central zone)
North American Datum of 1927 (NAD 27) is shown by dashed corner ticks
The values of the shift between NAD 83 and NAD 27 for 7.5-minute intersections are obtainable from National Geodetic Survey NADCON software
Non-National Forest System lands within the National Forest
Inholdings may exist in other National or State reservations
This map is not a legal document. Public lands are subject to change and leasing, and may have access restrictions; check with appropriate offices
Obtain permission before entering private lands



CONTOUR INTERVAL 40 FEET
NATIONAL GEODETIC VERTICAL DATUM OF 1929
TO CONVERT FROM FEET TO METERS, MULTIPLY BY 0.3048

THIS MAP COMPLIES WITH NATIONAL MAP ACCURACY STANDARDS
FOR SALE BY U.S. GEOLOGICAL SURVEY, P.O. BOX 25286, DENVER, COLORADO 80225
A FOLDER DESCRIBING TOPOGRAPHIC MAPS AND SYMBOLS IS AVAILABLE ON REQUEST



1	2	3
4	5	6
7	8	

ADJOINING 7.5' QUADRANGLES

Interstate.....
U.S.
State.....
County.....
National Forest, suitable for passenger cars.....
National Forest, suitable for high clearance vehicles.....
National Forest Trail.....

Primary highway.....
Secondary highway.....
Light-duty road.....
Composition: Unspecified.....
Paved.....
Dirt.....
Unimproved; 4 wheel drive.....
Trail.....
Gate; Barrier.....

EL PASO CANYON, NM
2004
32105-E6-TF-024
NGA 4849 II SW-SERIES V881

USGS Library
Reston, VA
Topo Archive

ISBN 1-411-30068-8
9 781411 300682

NOV 19 2006

USGS LIBRARY-RESTON
3 1818 0531472 7