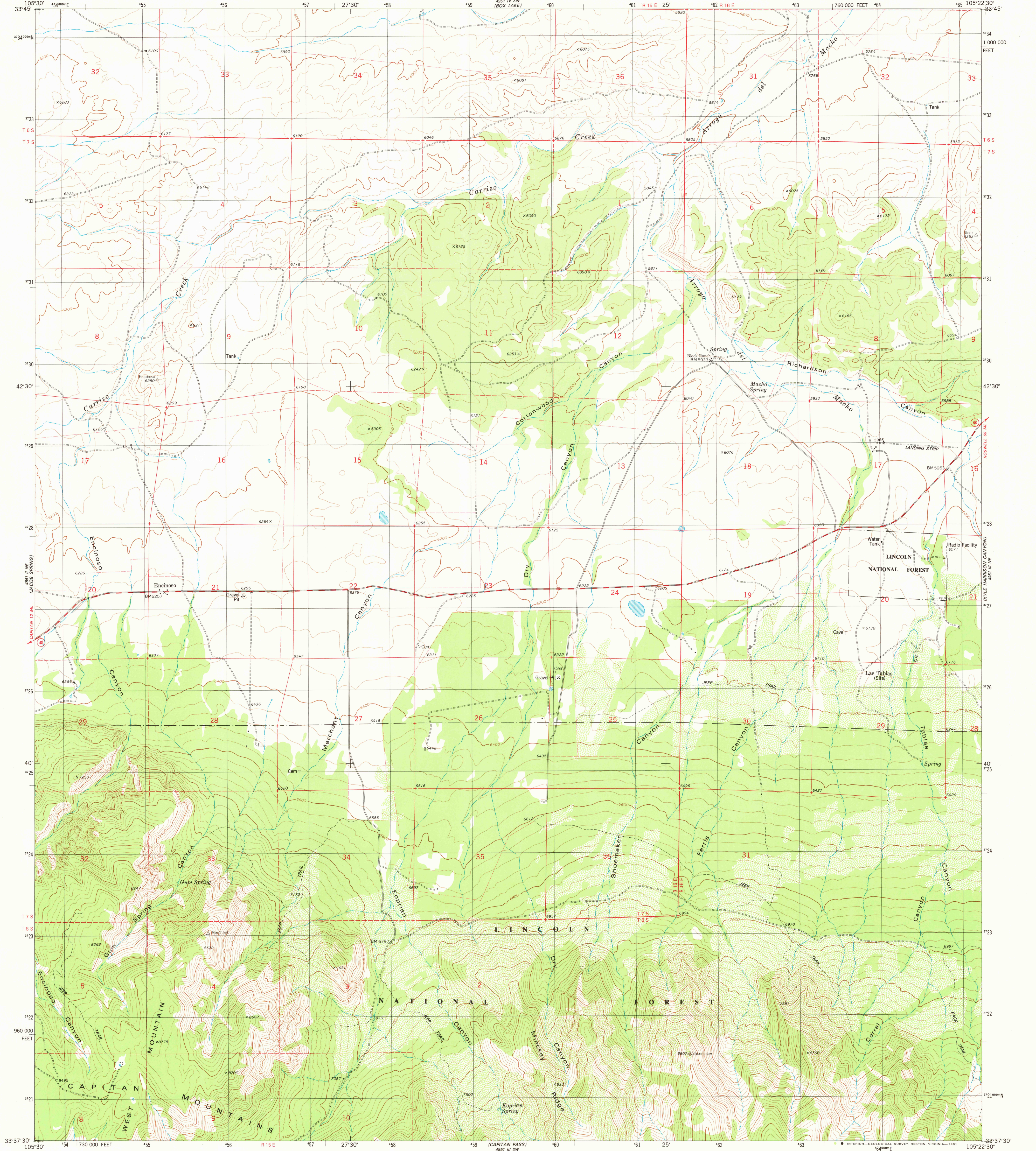
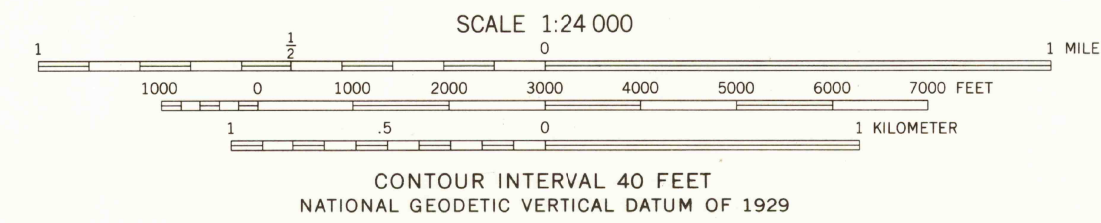
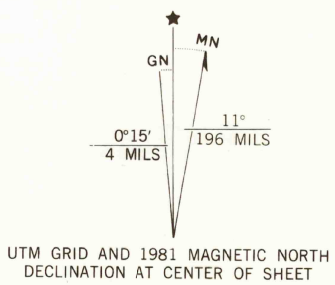


UNITED STATES
DEPARTMENT OF THE INTERIOR
GEOLOGICAL SURVEY

ENCINOSO QUADRANGLE
NEW MEXICO—LINCOLN CO.
7.5 MINUTE SERIES (TOPOGRAPHIC)
NW/4 CAPITAN MOUNTAINS 15' QUADRANGLE



Mapped, edited, and published by the Geological Survey
Control by USGS and NOS/NOAA
Topography by photogrammetric methods from aerial photographs
taken 1973. Field checked 1974. Map edited 1981
Projection and 10,000-foot grid ticks: New Mexico
coordinate system, central zone (transverse Mercator)
1000-meter Universal Transverse Mercator grid, zone 13
1927 North American datum
To place on the predicted North American Datum 1983
move the projection lines 5 meters south and
49 meters east as shown by dashed corner ticks
Fine red dashed lines indicate selected fence lines
Certain land lines are omitted because of insufficient data
There may be private inholdings within the boundaries of the
National or State reservations shown on this map



ROAD CLASSIFICATION
Primary highway, hard surface
Secondary highway, hard surface
Unimproved road
Interstate Route
U. S. Route
State Route
Light-duty road, hard or improved surface

THIS MAP COMPLIES WITH NATIONAL MAP ACCURACY STANDARDS
FOR SALE BY U. S. GEOLOGICAL SURVEY, DENVER, COLORADO 80225, OR RESTON, VIRGINIA 22092
A FOLDER DESCRIBING TOPOGRAPHIC MAPS AND SYMBOLS IS AVAILABLE ON REQUEST

USGS
HISTORICAL FILE
NATIONAL MAPPING DIVISION

ENCINOSO, N. MEX.
NW/4 CAPITAN MOUNTAINS 15' QUADRANGLE
N3337.5-W10522.5/7.5
1981
DMA 4951 III NW—SERIES V881

JUN 3 1981
2350