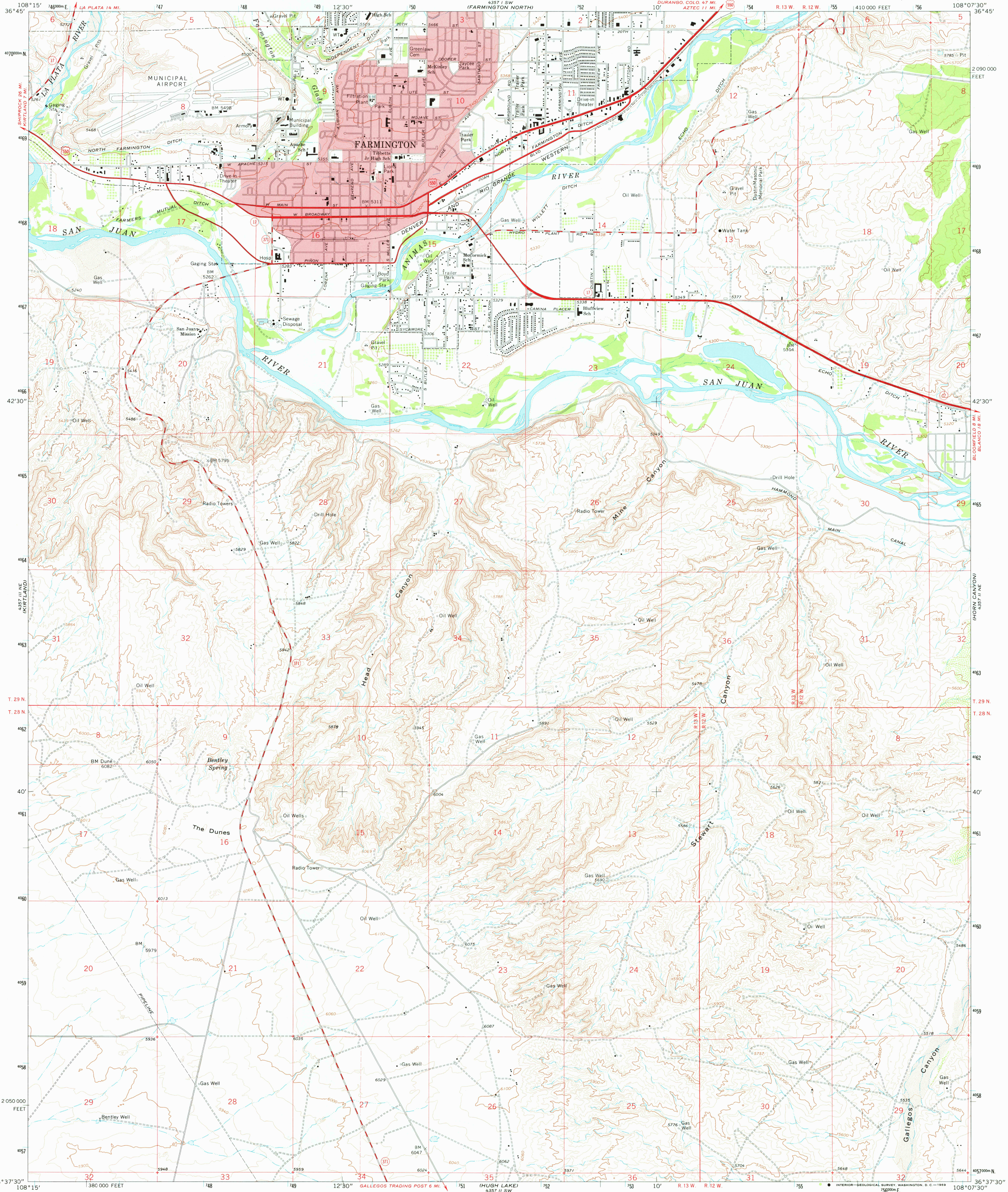
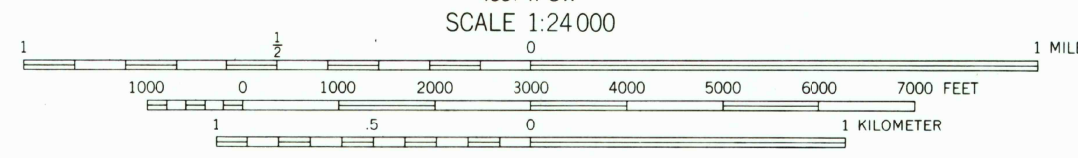
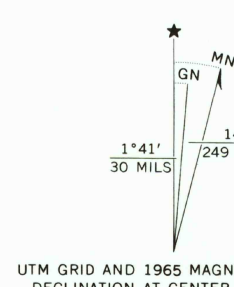


UNITED STATES  
DEPARTMENT OF THE INTERIOR  
GEOLOGICAL SURVEY

FARMINGTON SOUTH QUADRANGLE  
NEW MEXICO—SAN JUAN CO.  
7.5 MINUTE SERIES (TOPOGRAPHIC)



Mapped, edited, and published by the Geological Survey  
Control by USGS, USCG&S, and U. S. Bureau of Reclamation  
Topography by photogrammetric methods from aerial  
photographs taken 1964 and by plane-table surveys of the  
Bureau of Reclamation 1965. Field checked by USGS 1965  
Polyconic projection. 1927 North American datum  
10,000-foot grid based on New Mexico coordinate system,  
west zone  
1000-meter Universal Transverse Mercator grid ticks,  
zone 12, shown in blue  
Red tint indicates areas in which only landmark buildings are shown  
Fine red dashed lines indicate selected fence lines



CONTOUR INTERVAL 20 FEET  
DOTTED LINES REPRESENT 10-FOOT CONTOURS  
DATUM IS MEAN SEA LEVEL



ROAD CLASSIFICATION

Heavy-duty	Light-duty
Medium-duty	Unimproved dirt
U. S. Route	State Route

THIS MAP COMPLIES WITH NATIONAL MAP ACCURACY STANDARDS  
FOR SALE BY U. S. GEOLOGICAL SURVEY, DENVER, COLORADO 80225, OR WASHINGTON, D. C. 20242  
A FOLDER DESCRIBING TOPOGRAPHIC MAPS AND SYMBOLS IS AVAILABLE ON REQUEST

USGS  
Historical File  
Topographic Division  
FARMINGTON SOUTH, N. MEX.  
N3637.5—W10807.5/7.5  
1965  
AMS 4357 II NW—SERIES V881

APR 11 1977  
3800