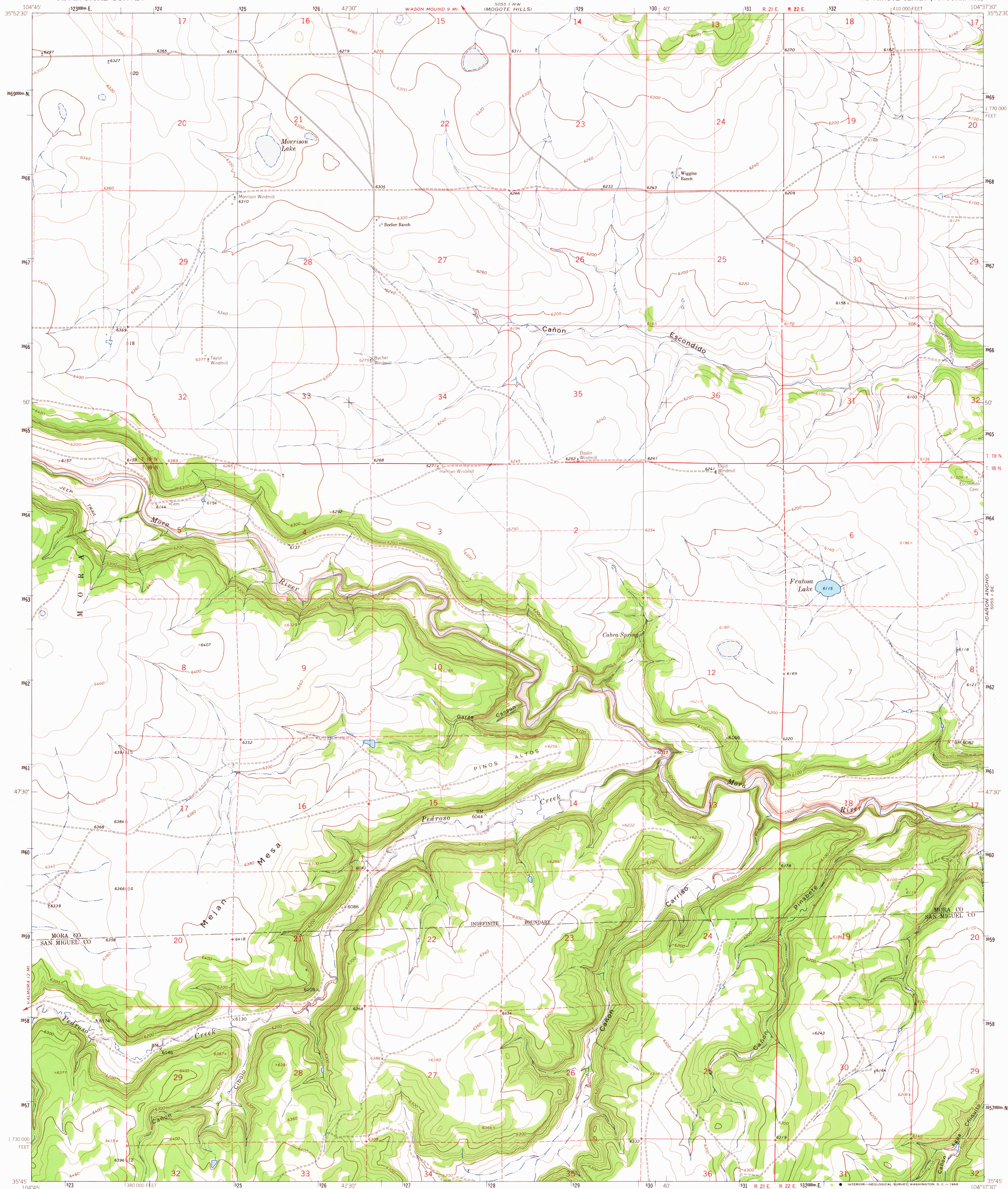
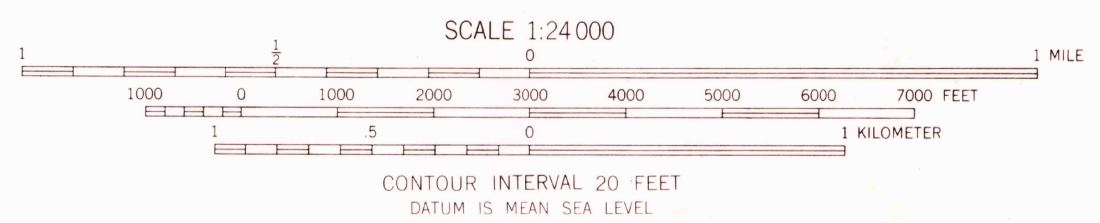
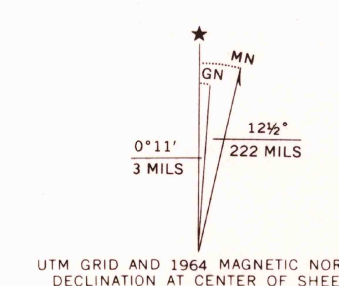


5055 N.E.
ALAMOSA CREEK



Mapped, edited, and published by the Geological Survey
Control by USGS and USC&GS
Topography by photogrammetric methods from aerial photographs taken 1963. Field checked 1964
Polyconic projection 1927 North American datum
10,000-foot grid based on New Mexico coordinate system, east zone
1000-meter Universal Transverse Mercator grid ticks, zone 13, shown in blue
Fine red dashed lines indicate selected fence lines



USGS
Historical File
Topographic Division

ROAD CLASSIFICATION
Light-duty ———— Unimproved dirt - - - - -



THIS MAP COMPLIES WITH NATIONAL MAP ACCURACY STANDARDS
FOR SALE BY U. S. GEOLOGICAL SURVEY, DENVER, COLORADO 80225, OR WASHINGTON, D. C. 20242
A FOLDER DESCRIBING TOPOGRAPHIC MAPS AND SYMBOLS IS AVAILABLE ON REQUEST

U.S.G.S.
FINE COPY
TOPOGRAPHIC DIVISION

FRUTOSA LAKE, N. MEX.
N3545-W10437.5/7.5
1964
AMS 5055 I SW - SERIES V881

2930
DEC 13 1964