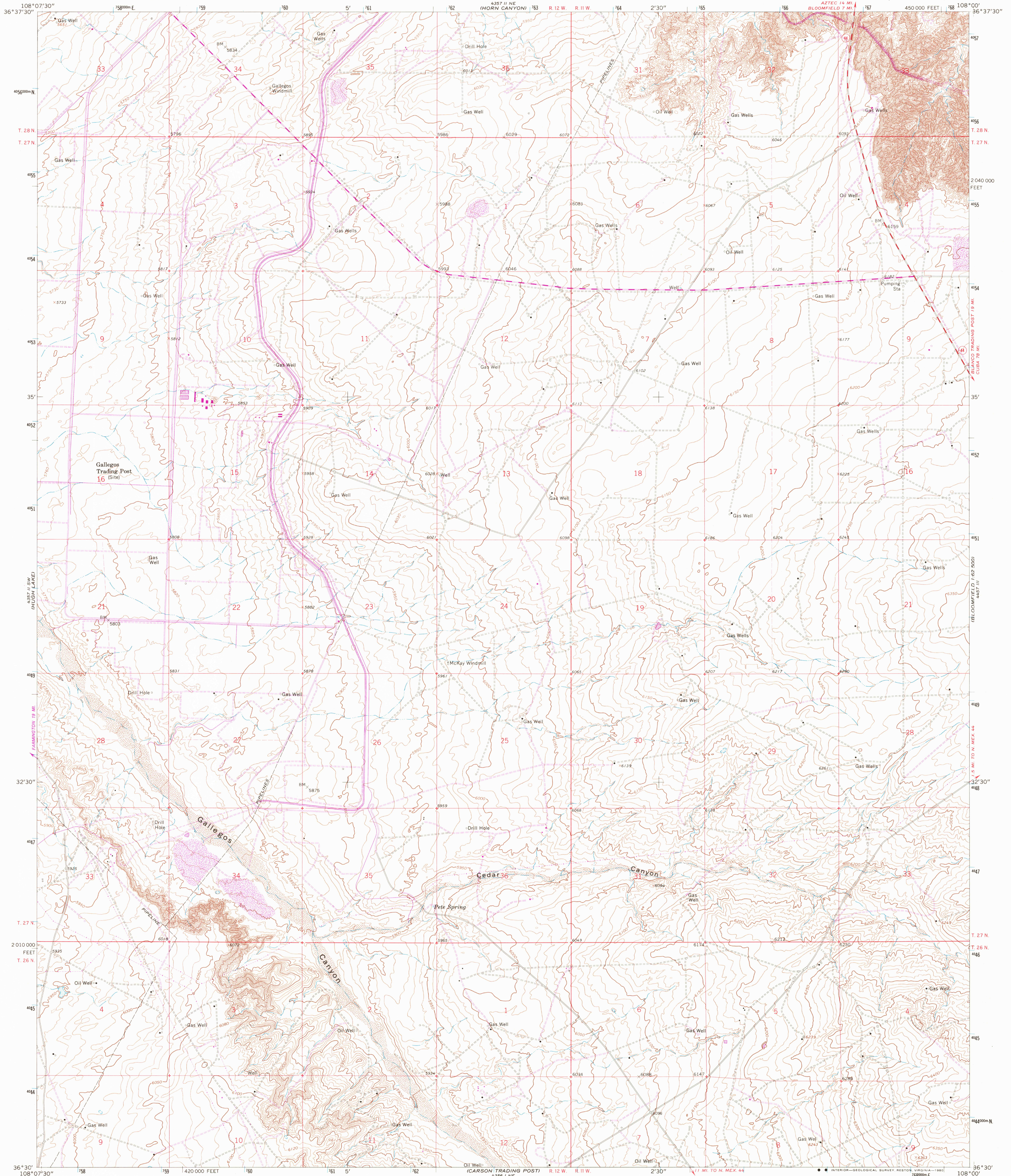


UNITED STATES
DEPARTMENT OF THE INTERIOR
GEOLOGICAL SURVEY

GALLEGOS TRADING POST QUADRANGLE
NEW MEXICO—SAN JUAN CO.
7.5 MINUTE SERIES (TOPOGRAPHIC)



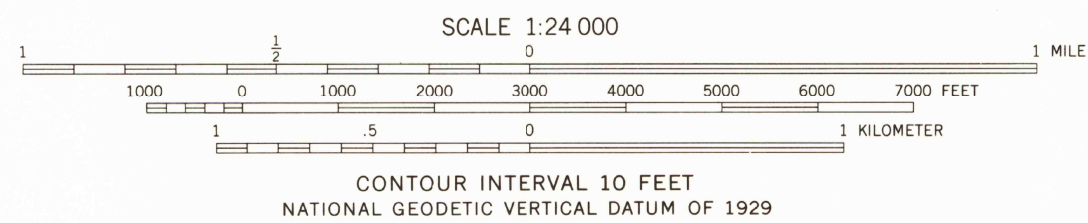
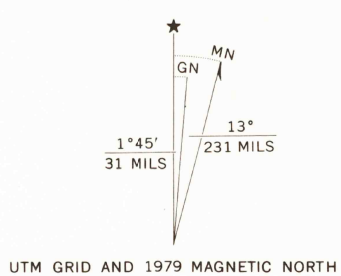
Mapped, edited, and published by the Geological Survey
Control by USGS, NOS/NOAA, and U. S. Bureau of Reclamation

Topography by photogrammetric methods from aerial
photographs taken 1964 and by planetable surveys of the
Bureau of Reclamation 1965. Field checked by USGS 1965

Polyconic projection. 1927 North American datum
10,000-foot grid based on New Mexico coordinate system,
west zone
1000-meter Universal Transverse Mercator grid ticks,
zone 12, shown in blue

Fine red dashed lines indicate selected fence lines
To place on the predicted North American Datum 1983
move the projection lines 1 meters north and
56 meters east as shown by dashed corner ticks

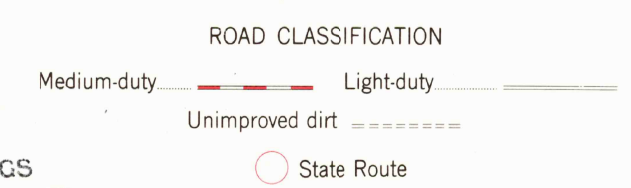
Revisions shown in purple compiled from aerial photographs
taken 1978 and other source data. This information not
field checked. Map edited 1979



THIS MAP COMPLIES WITH NATIONAL MAP ACCURACY STANDARDS
FOR SALE BY U. S. GEOLOGICAL SURVEY, DENVER, COLORADO 80225, OR RESTON, VIRGINIA 22092
A FOLDER DESCRIBING TOPOGRAPHIC MAPS AND SYMBOLS IS AVAILABLE ON REQUEST



USGS
Historical File
Topographic Division



GALLEGOS TRADING POST, N. MEX.
N3630—W10800/7.5

1965
PHOTOREVISED 1979
DMA 4357 II SE—SERIES V881

SEP - 8 1980

1660