

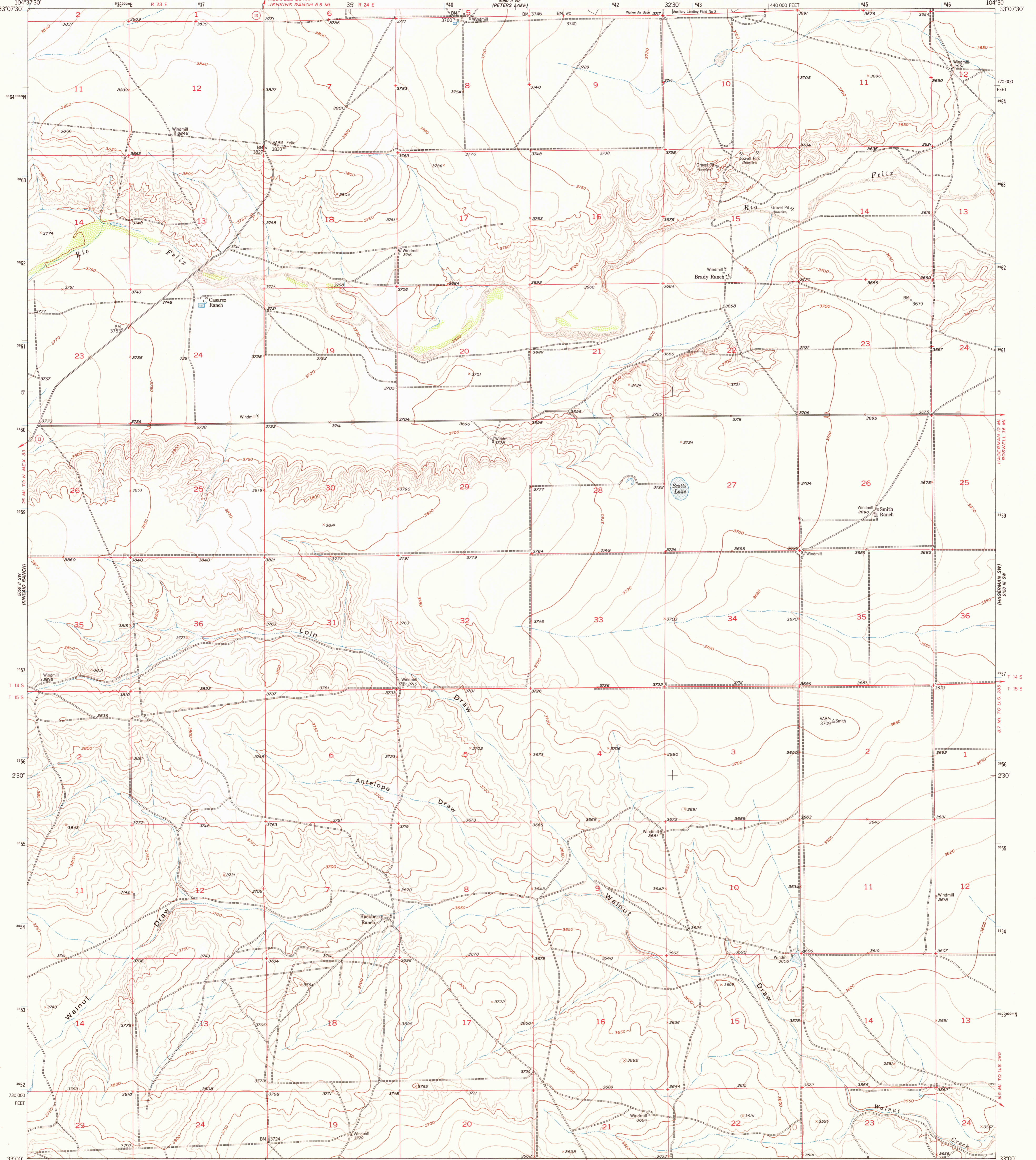
890' N.W. / 1/4 SECTION

UNITED STATES DEPARTMENT OF THE INTERIOR GEOLOGICAL SURVEY

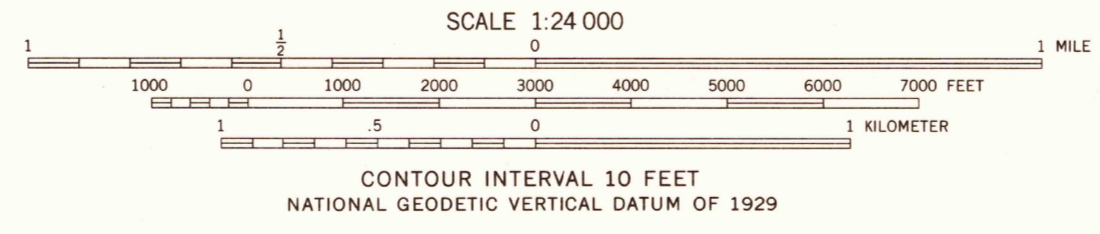
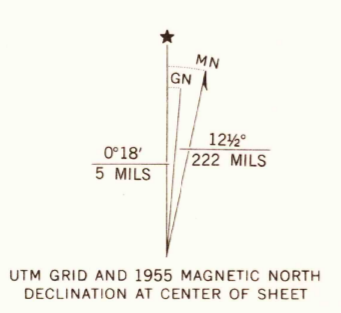


HACKBERRY RANCH QUADRANGLE NEW MEXICO-CHAVES CO. 7.5 MINUTE SERIES (TOPOGRAPHIC)

580' N.W. / 1/4 SECTION



Maped, edited, and published by the Geological Survey  
Control by USGS and USC&GS  
Culture and drainage in part compiled from aerial photographs taken 1947. Topography by planetable surveys 1955  
Polycenic projection. 1927 North American datum 10,000-foot grid based on New Mexico coordinate system, east zone  
1000-meter Universal Transverse Mercator grid ticks, zone 13, shown in blue  
Map photinspected 1975  
No major culture or drainage changes observed



ROAD CLASSIFICATION

Heavy-duty	Light-duty
Medium-duty	Unimproved dirt
U.S. Route	State Route

THIS MAP COMPLIES WITH NATIONAL MAP ACCURACY STANDARDS FOR SALE BY U.S. GEOLOGICAL SURVEY, DENVER, COLORADO 80225, OR RESTON, VIRGINIA 22092 A FOLDER DESCRIBING TOPOGRAPHIC MAPS AND SYMBOLS IS AVAILABLE ON REQUEST

USGS Historical File Topographic Division

HACKBERRY RANCH, N. MEX. N3300-W10430/7.5 1955 PHOTINSPECTED 1975 DMA 5050 II SE-SERIES Y881

APR 16 1978

1300