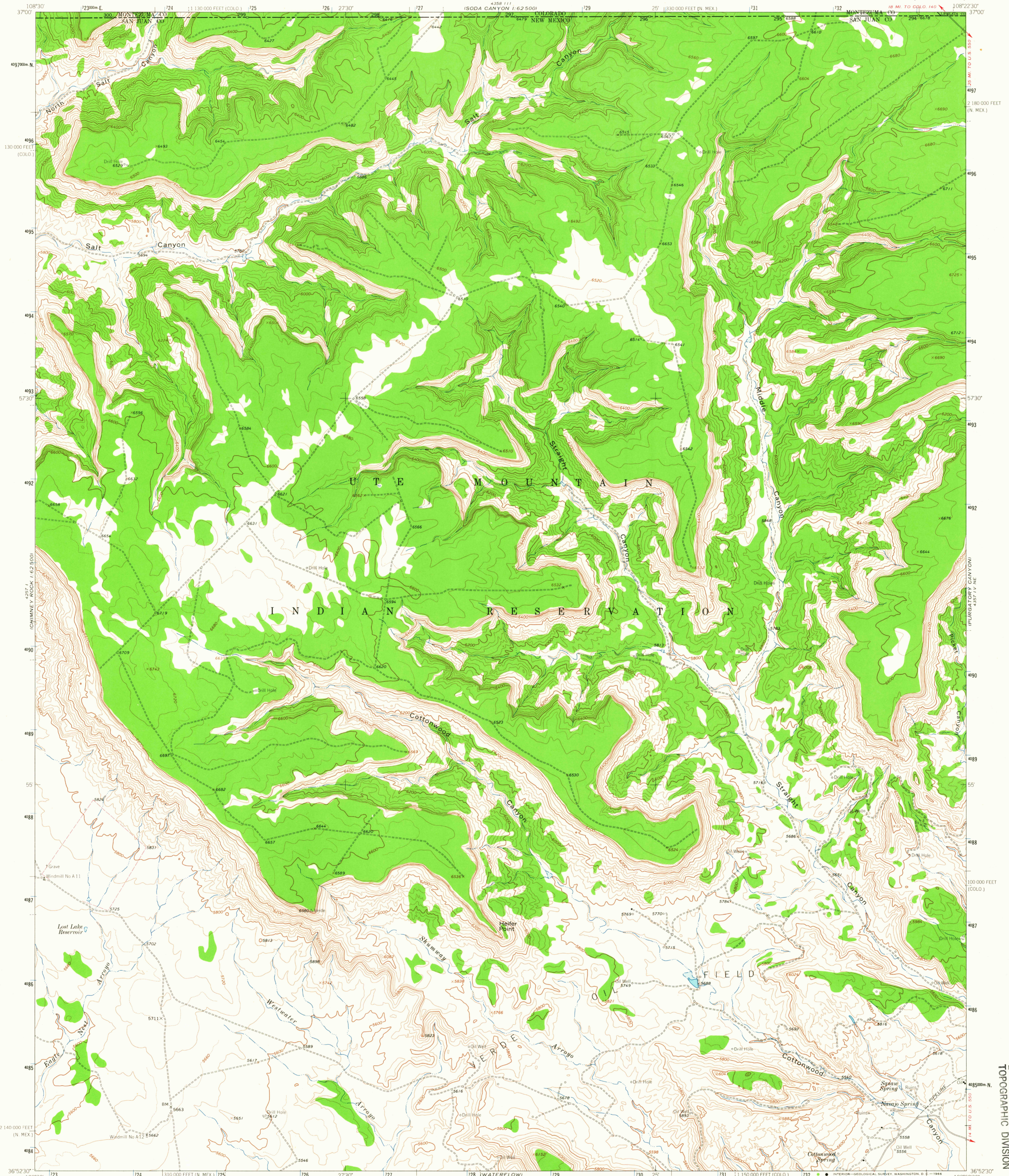
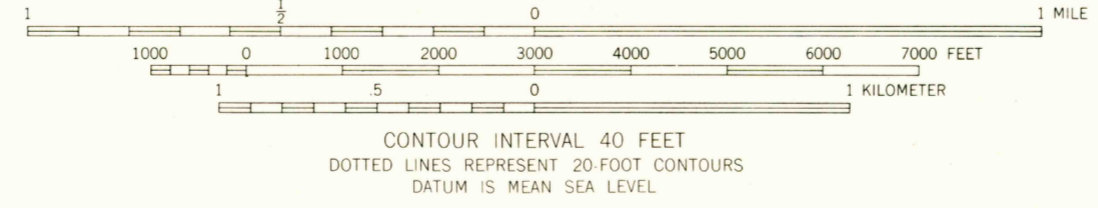
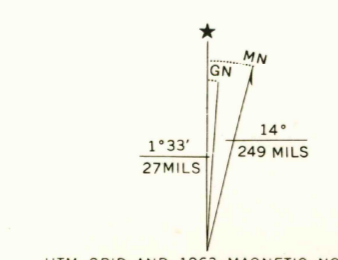


4357 IV NW  
1:62,500



Mapped, edited, and published by the Geological Survey  
Control by USGS and USC&GS  
Topography by photogrammetric methods from aerial photographs taken 1958 and 1962. Field checked 1963  
Polyconic projection. 1927 North American datum 10,000 foot grids based on New Mexico coordinate system, west zone and on Colorado coordinate system, south zone  
1000-meter Universal Transverse Mercator grid ticks, zone 12, shown in blue  
Fine red dashed lines indicate selected fence lines  
Where omitted, land lines have not been established



CONTOUR INTERVAL 40 FEET  
DOTTED LINES REPRESENT 20 FOOT CONTOURS  
DATUM IS MEAN SEA LEVEL



USGS  
Historical File  
Topographic Division

ROAD CLASSIFICATION  
Light-duty ———— Unimproved dirt - - - - -

THIS MAP COMPLIES WITH NATIONAL MAP ACCURACY STANDARDS  
FOR SALE BY U.S. GEOLOGICAL SURVEY, DENVER, COLORADO 80225, OR WASHINGTON, D. C. 20242  
A FOLDER DESCRIBING TOPOGRAPHIC MAPS AND SYMBOLS IS AVAILABLE ON REQUEST

HEIFER POINT, N. MEX.-COLO.  
N3652.5-W10822.5/7.5

1963

AMS 4357 IV NW-SERIES V881

U.S.G.S.  
FILE COPY  
TOPOGRAPHIC DIVISION

2760  
MAR 3 1966