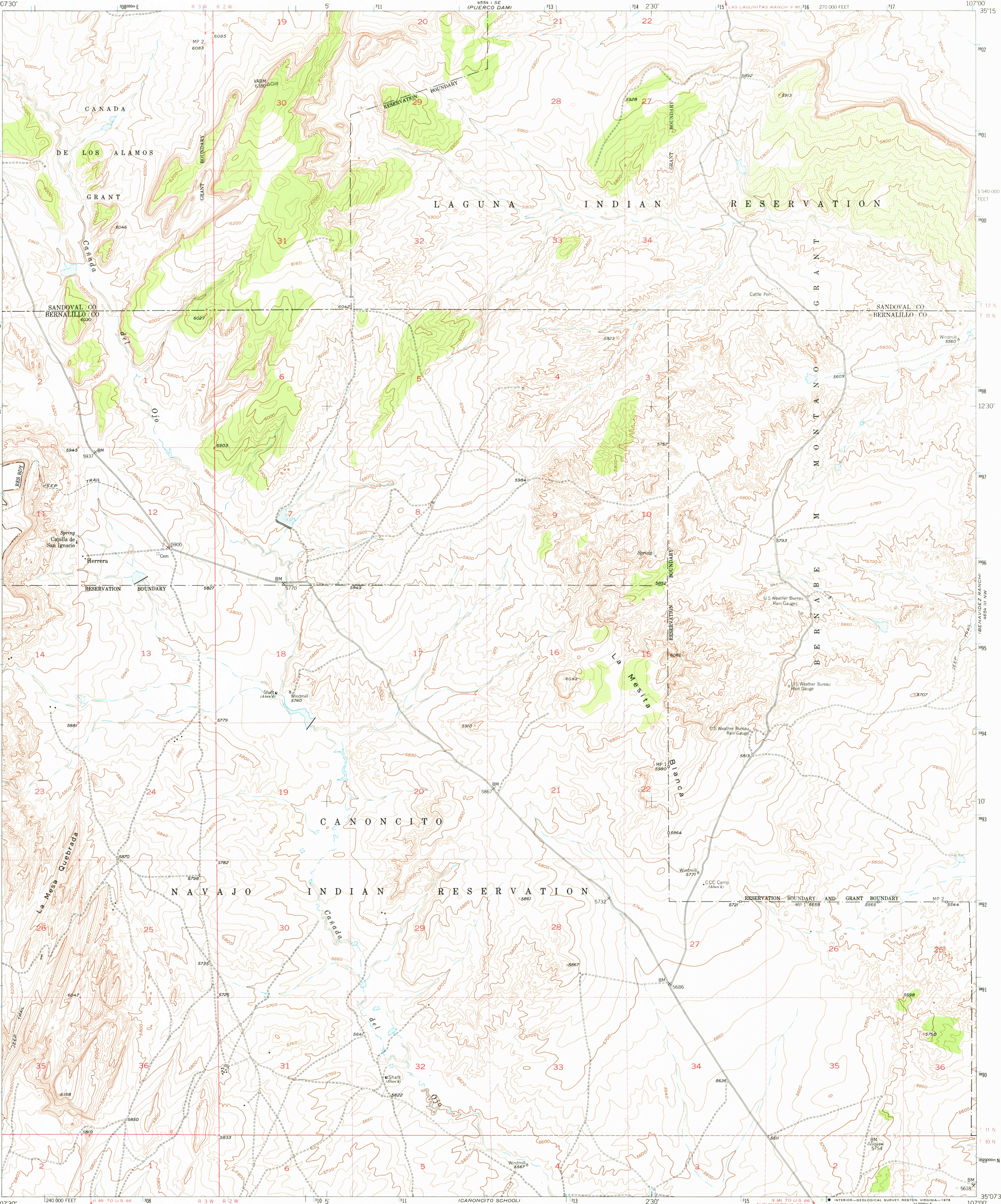
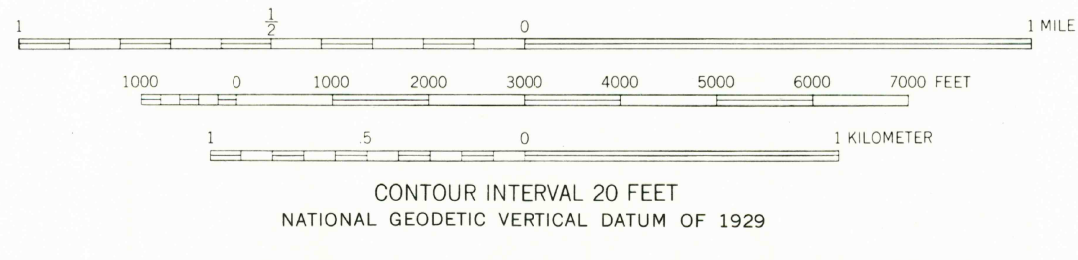
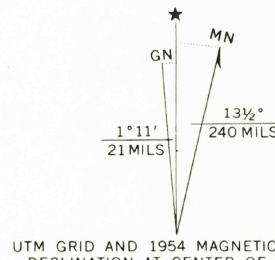


UNITED STATES  
DEPARTMENT OF THE INTERIOR  
GEOLOGICAL SURVEY

HERRERA QUADRANGLE  
NEW MEXICO  
7.5 MINUTE SERIES (TOPOGRAPHIC)



Mapped, edited, and published by the Geological Survey  
Control by USGS and USC&GS  
Topography from aerial photographs by multiplex methods  
Aerial photographs taken 1951. Field check 1954  
Polyconic projection. 1927 North American datum  
10,000-foot grid based on New Mexico coordinate system,  
central zone  
Dashed land lines indicate approximate locations  
1000-meter Universal Transverse Mercator grid ticks,  
zone 13, shown in blue



ROAD CLASSIFICATION  
Heavy-duty ——— Light-duty ———  
Medium-duty ——— Unimproved dirt ———  
U. S. Route ——— State Route ———



THIS MAP COMPLIES WITH NATIONAL MAP ACCURACY STANDARDS  
FOR SALE BY U. S. GEOLOGICAL SURVEY, DENVER, COLORADO 80225, OR RESTON, VIRGINIA 22092  
A FOLDER DESCRIBING TOPOGRAPHIC MAPS AND SYMBOLS IS AVAILABLE ON REQUEST

USGS  
Historical File  
Topographic Division

AUG 15 1978  
HERRERA, N. MEX.  
N3507.5-W10700.7.5  
1954  
AMS 4554 II NE-SERIES V881