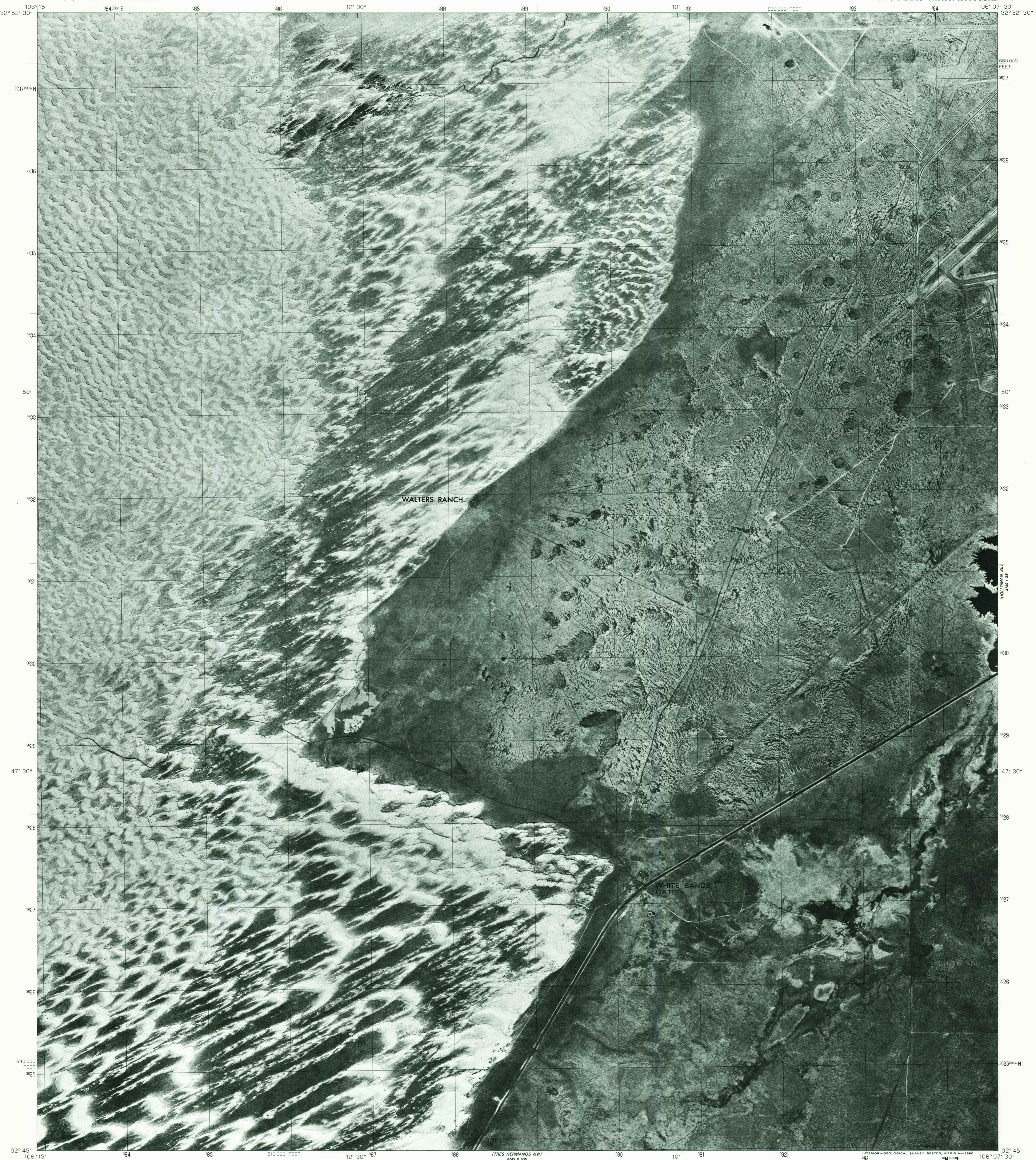
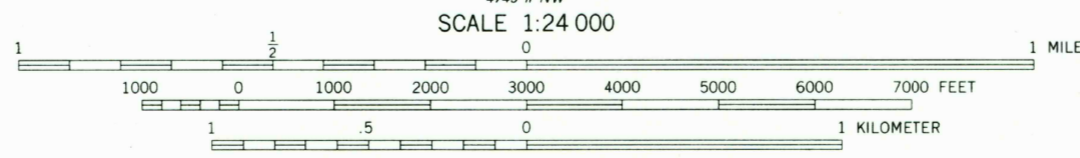
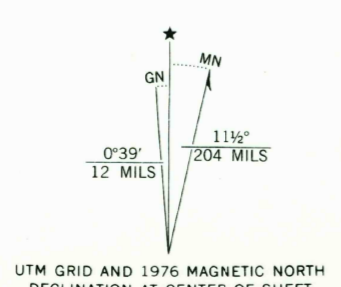


4749 SW  
HOLLOMAN SW



Produced and published by the Geological Survey  
in cooperation with the Soil Conservation Service  
Orthophotograph prepared from 1:80,000-scale  
aerial photograph taken March 9, 1976  
Projection and 10,000-foot grid ticks: New Mexico  
coordinate system, central zone (transverse Mercator)  
1000-meter Universal Transverse Mercator grid,  
zone 13. 1927 North American Datum  
Photomagey rectified by automatic correlation



PRINCIPAL NUMBERED HIGHWAYS  
Interstate Route U.S. Route State Route



SEP 21 1980  
This quadrangle area also covered by SW quarter  
of Holloman 1:62,500-scale topographic map

THIS MAP COMPLIES WITH NATIONAL MAP ACCURACY STANDARDS  
FOR SALE BY U. S. GEOLOGICAL SURVEY, DENVER, COLORADO 80225, OR RESTON, VIRGINIA 22092

USGS  
Historical File  
Topographic Division

HOLLOMAN SW, N. MEX.  
N3245-W10607.5/7.5  
1976

DMA 4749 | SW-SERIES V081