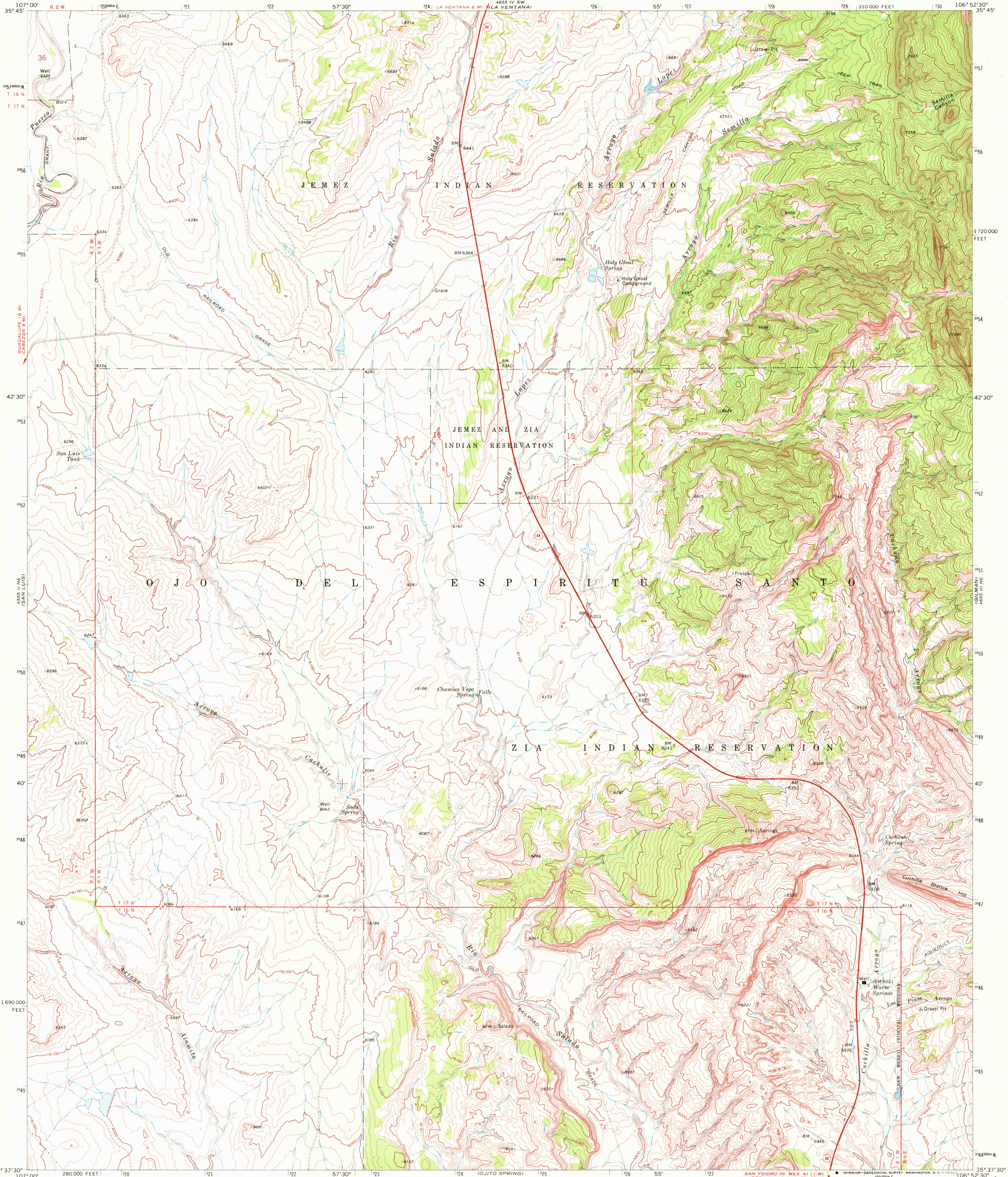
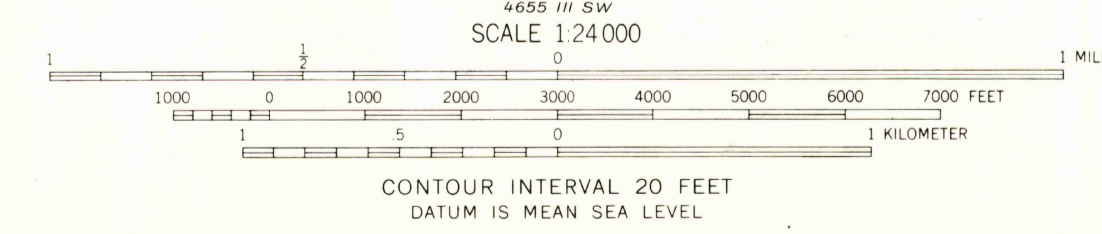
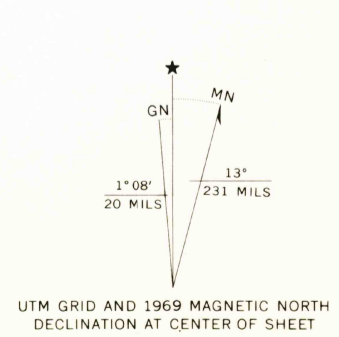


UNITED STATES  
DEPARTMENT OF THE INTERIOR  
GEOLOGICAL SURVEY

HOLY GHOST SPRING QUADRANGLE  
NEW MEXICO—SANDOVAL CO.  
7.5 MINUTE SERIES (TOPOGRAPHIC)  
NW 4 SAN YSIDRO 15' QUADRANGLE



Mapped, edited, and published by the Geological Survey  
Control by USGS and USC&GS  
Topography by photogrammetric methods from aerial  
photographs taken 1964. Field checked 1969  
Polyconic projection. 1927 North American datum  
10,000-foot grid based on New Mexico coordinate system,  
central zone  
1000-meter Universal Transverse Mercator grid ticks,  
zone 13, shown in blue  
Fine red dashed lines indicate selected fence lines  
Where omitted, land lines have not been established



ROAD CLASSIFICATION

Primary highway, hard surface ——— Light-duty road, hard or improved surface ———

Secondary highway, hard surface ——— Unimproved road ———

Interstate Route — U. S. Route — State Route —

NEW MEXICO

QUADRANGLE LOCATION

THIS MAP COMPLIES WITH NATIONAL MAP ACCURACY STANDARDS  
FOR SALE BY U. S. GEOLOGICAL SURVEY, DENVER, COLORADO 80226, OR WASHINGTON, D. C. 20242  
A FOLDER DESCRIBING TOPOGRAPHIC MAPS AND SYMBOLS IS AVAILABLE ON REQUEST

HOLY GHOST SPRING, N. MEX. NOV 7 1972  
NW 4 SAN YSIDRO 15' QUADRANGLE  
N3537.5—W10652.5/7.5