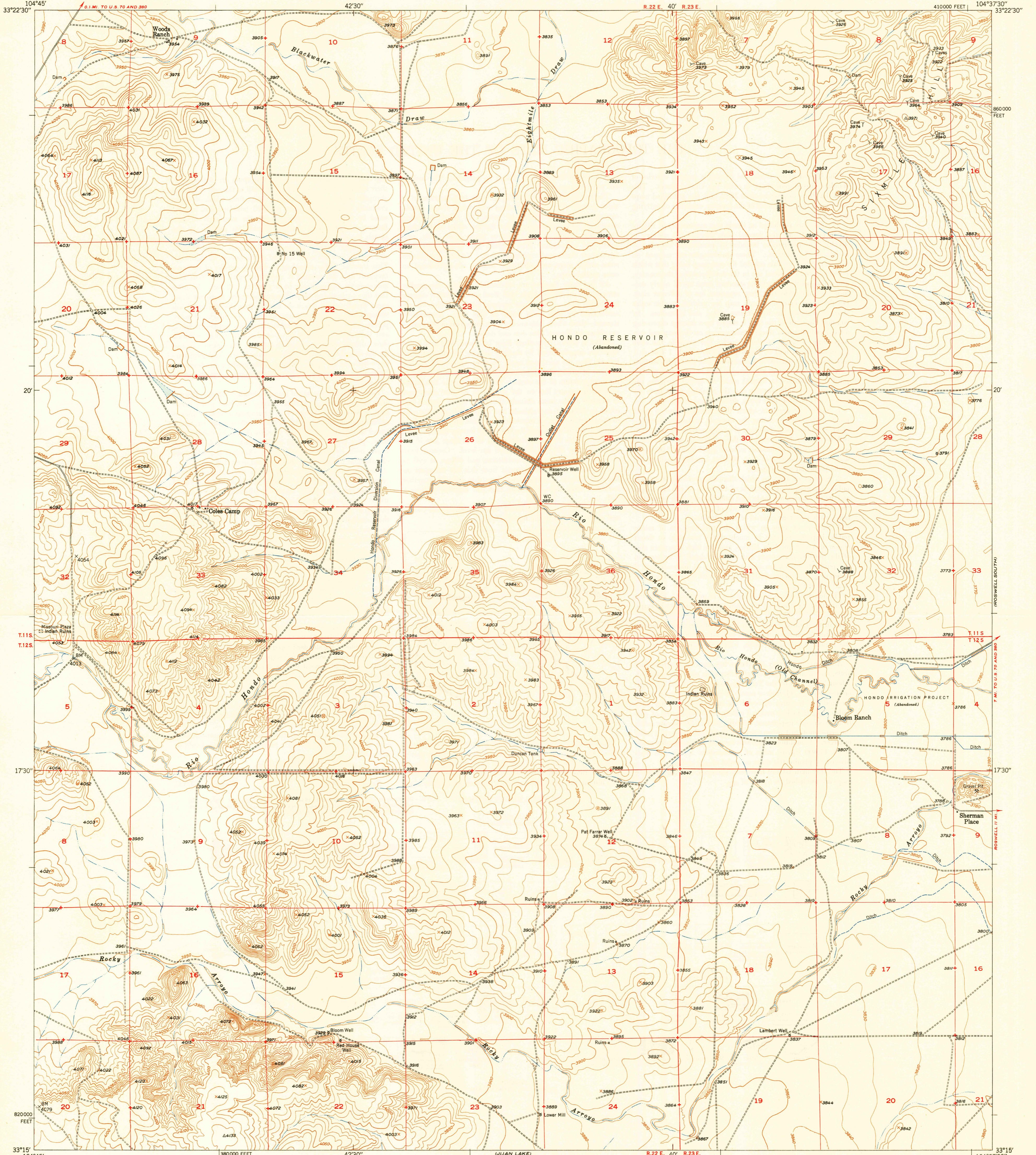
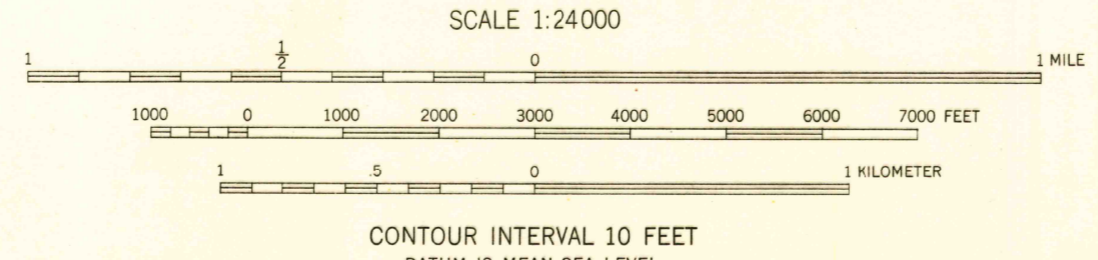


U.S.G.S.  
FILE COPY  
Inspection and Editing



Maped, edited, and published by the Geological Survey  
Control by USGS and USC&GS  
Culture and drainage in part compiled from  
aerial photographs taken March 1947  
Topography by plane-table methods, 1948-1949  
Polyconic projection. 1927 North American datum  
10,000-foot grid based on New Mexico coordinate system,  
east zone

TRUE NORTH  
MAGNETIC NORTH  
APPROXIMATE MEAN  
DECLINATION, 1949



USGS  
Historical File  
Topographic Division

ROAD CLASSIFICATION

HARD-SURFACE ALL WEATHER ROADS	DRY WEATHER ROADS
Heavy-duty <b>LANE IS LANE</b>	Improved dirt
Medium-duty <b>LANE IS LANE</b>	Unimproved dirt
Loose-surface, graded, or narrow hard-surface	
U. S. Route	State Route

U.S.G.S.  
FILE COPY  
Inspection and Editing

HONDO RESERVOIR, N. MEX.  
N3315-W10437.5/7.5

THIS MAP COMPLIES WITH NATIONAL MAP ACCURACY STANDARDS  
FOR SALE BY U. S. GEOLOGICAL SURVEY, DENVER, COLORADO OR WASHINGTON 25, D. C.

EDITION OF 1949  
OCT 19 1949