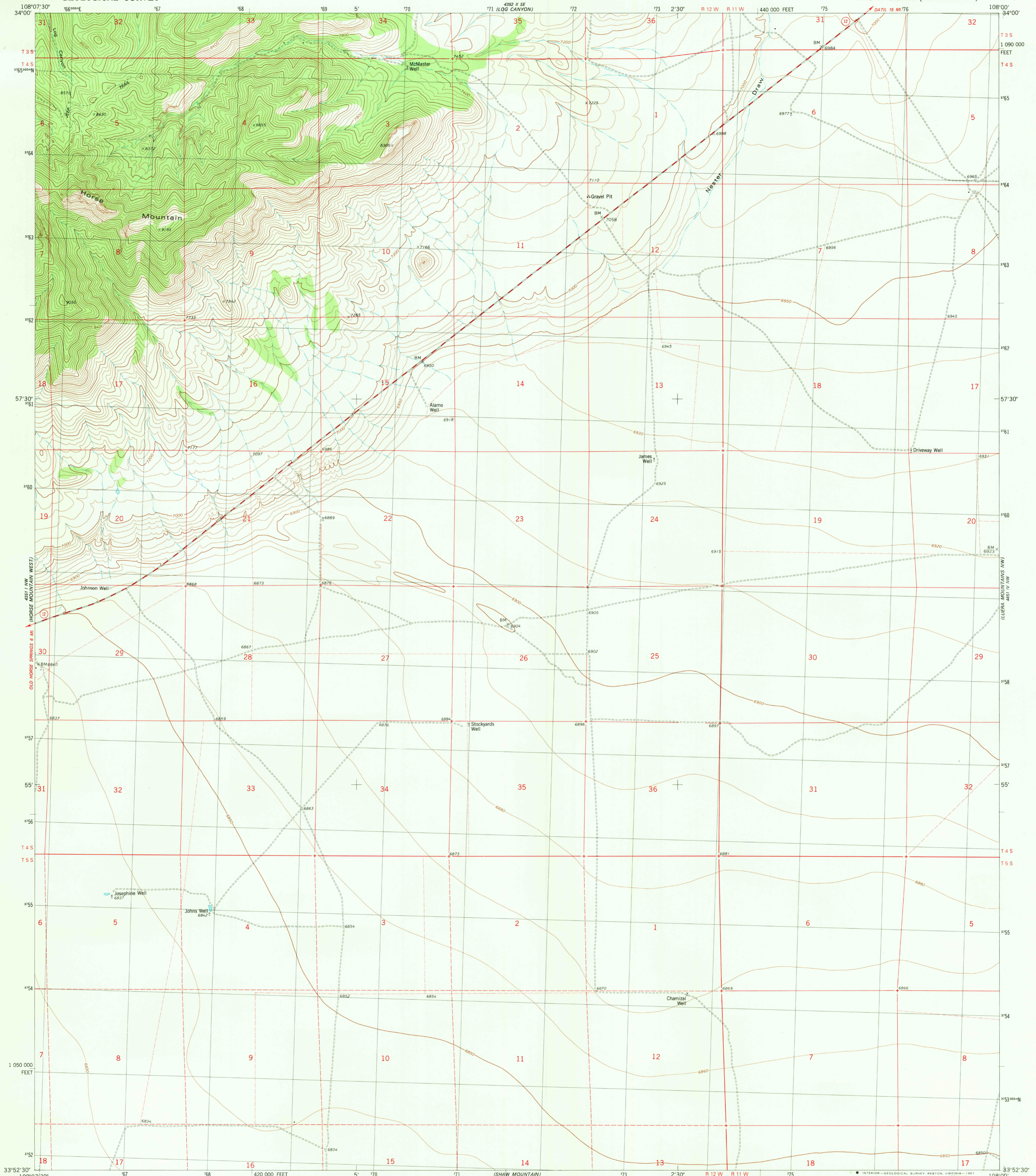


UNITED STATES  
DEPARTMENT OF THE INTERIOR  
GEOLOGICAL SURVEY

HORSE MOUNTAIN EAST QUADRANGLE  
NEW MEXICO—CATRON CO.  
7.5 MINUTE SERIES (TOPOGRAPHIC)



Mapped, edited, and published by the Geological Survey

Control by USGS, NOS/NOAA, and U.S. Forest Service

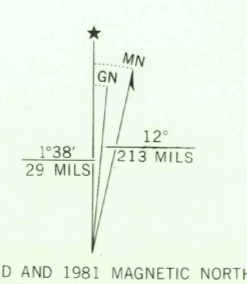
Topography by photogrammetric methods from aerial photographs taken 1973. Field checked 1975. Map edited 1981

Projection and 10,000-foot grid ticks: New Mexico coordinate system, west zone (transverse Mercator)

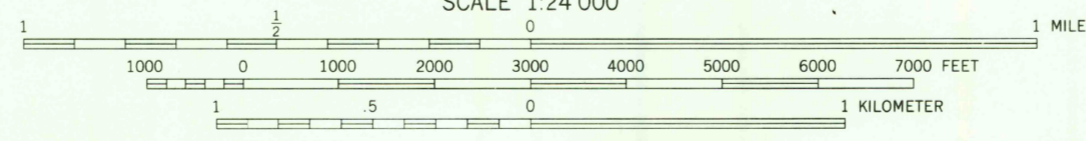
1000-meter Universal Transverse Mercator grid, zone 12 1927 North American datum

To place on the predicted North American Datum 1983 move the projection lines 3 meters south and 55 meters east as shown by dashed corner ticks

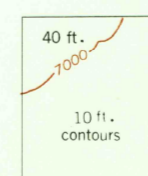
Fine red dashed lines indicate selected fence line



SCALE 1:24 000



CONTOUR INTERVAL 10 AND 40 FEET  
NATIONAL GEODETIC VERTICAL DATUM OF 1929



ROAD CLASSIFICATION

Primary highway, hard surface	Light-duty road, hard or improved surface
Secondary highway, hard surface	Unimproved road
Interstate Route	U. S. Route
	State Route

THIS MAP COMPLIES WITH NATIONAL MAP ACCURACY STANDARDS  
FOR SALE BY U. S. GEOLOGICAL SURVEY, DENVER, COLORADO 80225, OR RESTON, VIRGINIA 22092  
A FOLDER DESCRIBING TOPOGRAPHIC MAPS AND SYMBOLS IS AVAILABLE ON REQUEST

HORSE MOUNTAIN EAST, N. MEX.  
N3352.5-W10800/7.5

1981

DMA 4351 I NE-SERIES V881

USGS  
HISTORICAL FILE  
NATIONAL MAPPING DIVISION

JUL 7 1981  
2000