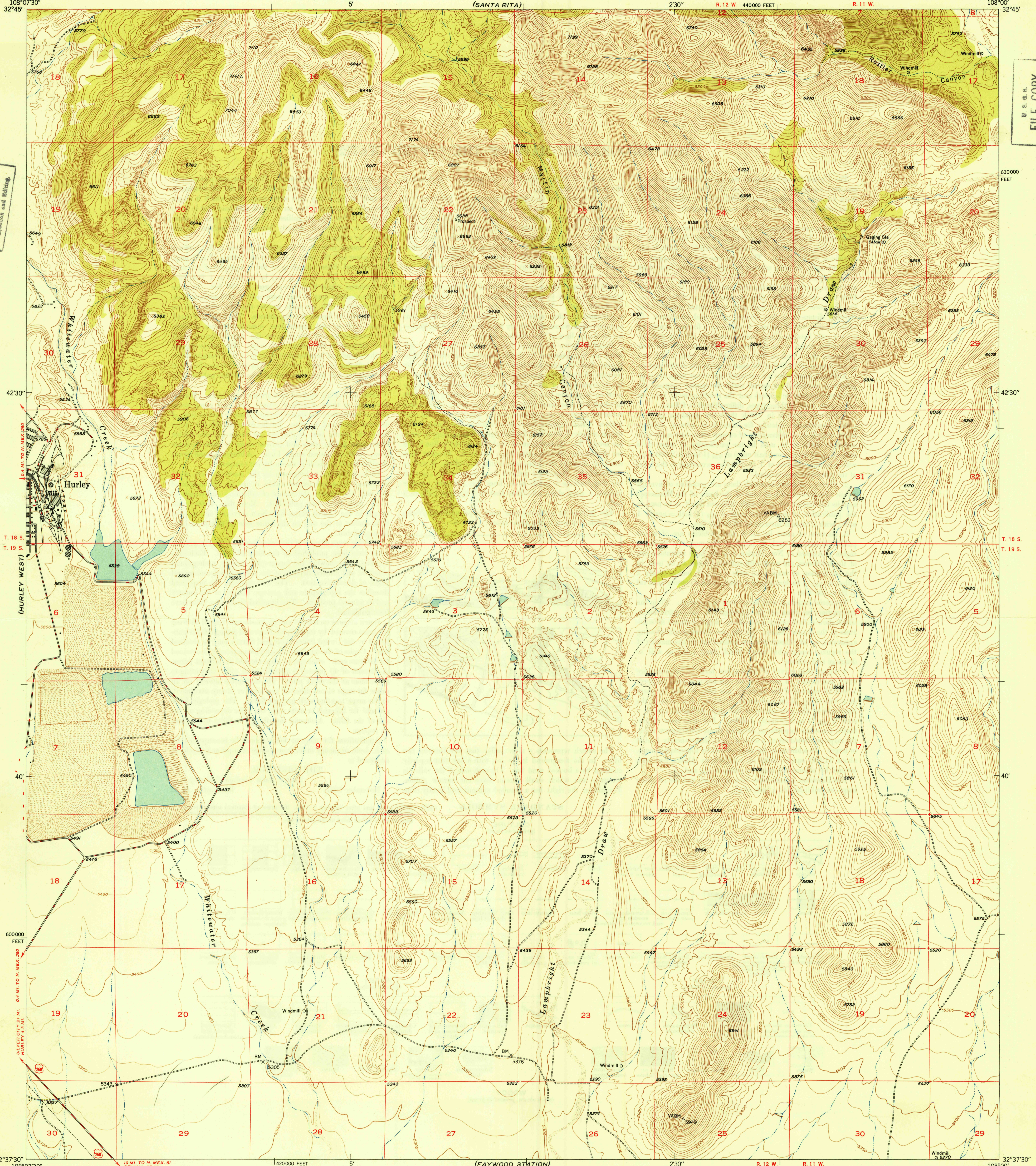


(FORT BAYARD)

U.S.G.S.
FILE COPY
Inspection and Billing

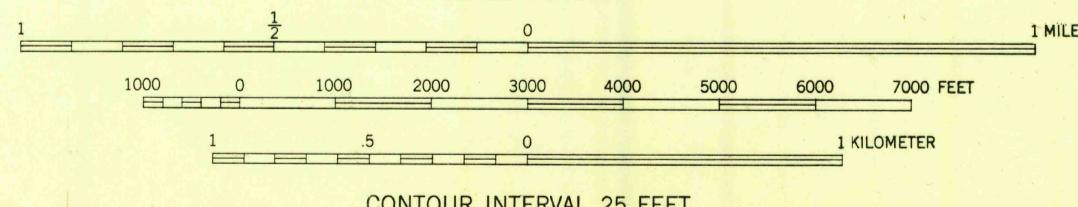
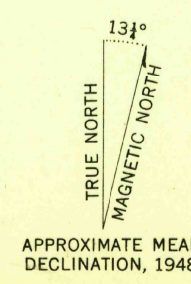
U.S.G.S.
FILE COPY
Inspection and Billing



108°07'30"
32°45'
42°30'
32°37'30"

108°00'
32°45'
42°30'
40'
32°37'30"

Mapped, edited, and published by the Geological Survey
Control by USGS and USC&GS
Topography from aerial photographs by multiplex methods
Aerial photographs taken November 1945. Field check, 1948
Polyconic projection. 1927 North American datum
10,000-foot grid based on New Mexico coordinate system,
west zone
Dashed land lines indicate approximate location



CONTOUR INTERVAL 25 FEET
DATUM IS MEAN SEA LEVEL

USGS
Historical File
Topographic Division

ROAD CLASSIFICATION
HARD-SURFACE ALL WEATHER ROADS DRY WEATHER ROADS
Heavy-duty. —+LANE LANE Improved dirt
Medium-duty. —+LANE LANE Unimproved dirt
Loose-surface, graded, or narrow hard-surface
U. S. Route State Route

U.S.G.S.
FILE COPY
Inspection and Billing

HURLEY EAST, N. MEX.
N3237.5—W10800/7.5
PRINTED 1949

THIS MAP COMPLIES WITH NATIONAL MAP ACCURACY STANDARDS
FOR SALE BY U. S. GEOLOGICAL SURVEY, WASHINGTON 25, D. C.

MAR 10 1949

3185