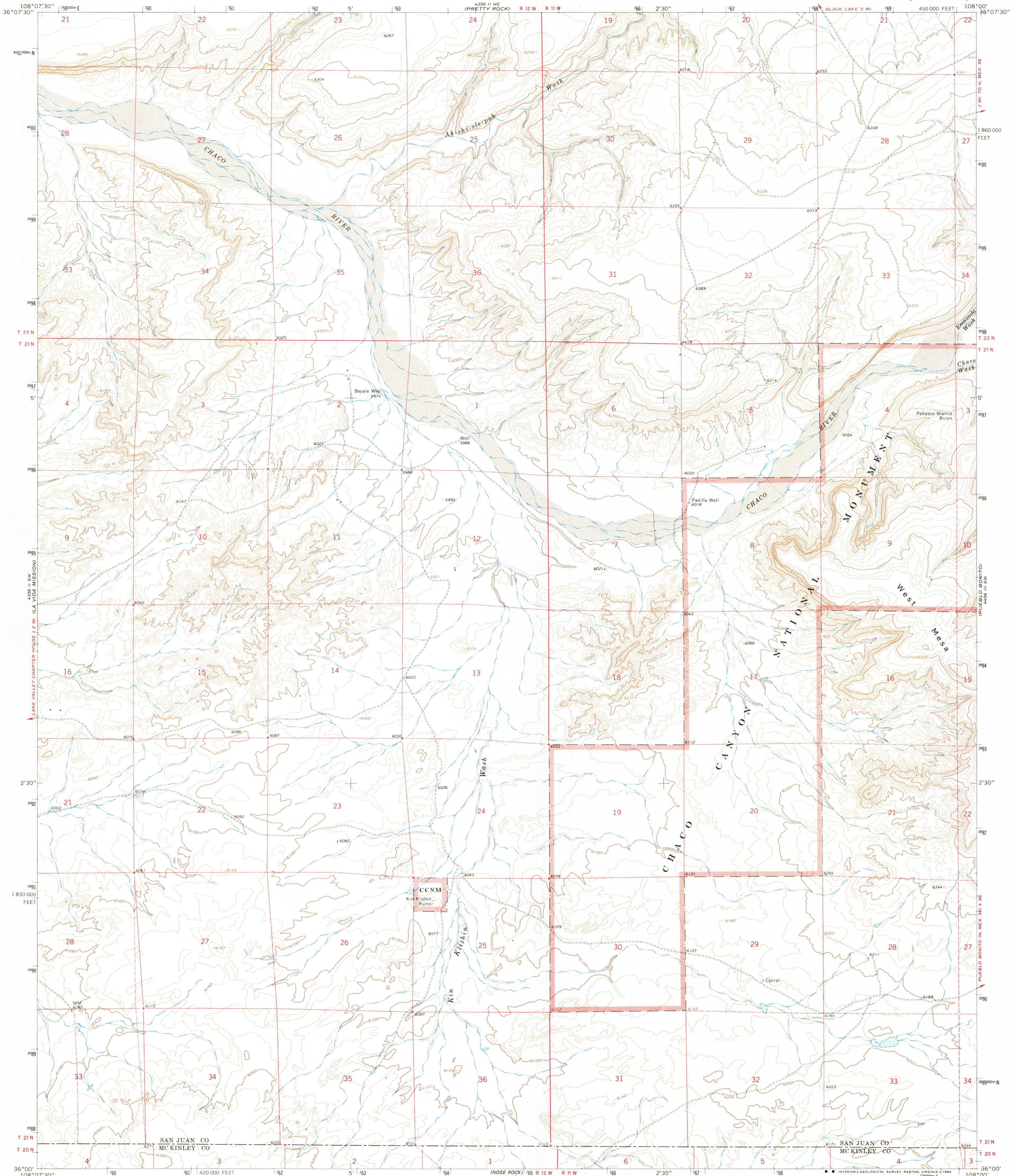


UNITED STATES
DEPARTMENT OF THE INTERIOR
GEOLOGICAL SURVEY

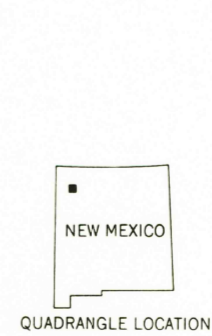
KIN KLIZHIN RUINS QUADRANGLE
NEW MEXICO
7.5 MINUTE SERIES (TOPOGRAPHIC)



Mapped, edited, and published by the Geological Survey
Control by USGS and USC&GS
Topography by photogrammetric methods from aerial photographs taken 1965. Field checked 1966
Polyconic projection. 1927 North American datum 10,000-foot grid based on New Mexico coordinate system, west zone 1000-meter Universal Transverse Mercator grid ticks, zone 12, shown in blue
Fine red dashed lines indicate selected fence lines
To place on the predicted North American Datum 1983 move the projection lines 1 meter north and 56 meters east as shown by dashed corner ticks
There may be private inholdings within the boundaries of the National or State reservations shown on this map

Map photoinspected 1978
No major culture or drainage changes observed

SCALE 1:24 000
1 000 0 1000 2000 3000 4000 5000 6000 7000 FEET
1 0 1 2 3 4 5 6 7 8 9 10 KILOMETER
CONTOUR INTERVAL 20 FEET
NATIONAL GEODETIC VERTICAL DATUM OF 1929



USGS
Historical File
Topographic Division
ROAD CLASSIFICATION
Unimproved dirt-----
SEP 17 1980
KIN KLIZHIN RUINS, N. MEX.
N3600-W10800/7.5
1966
PHOTOINSPECTED 1978
DMA 4356 II SE-SERIES V81
1300