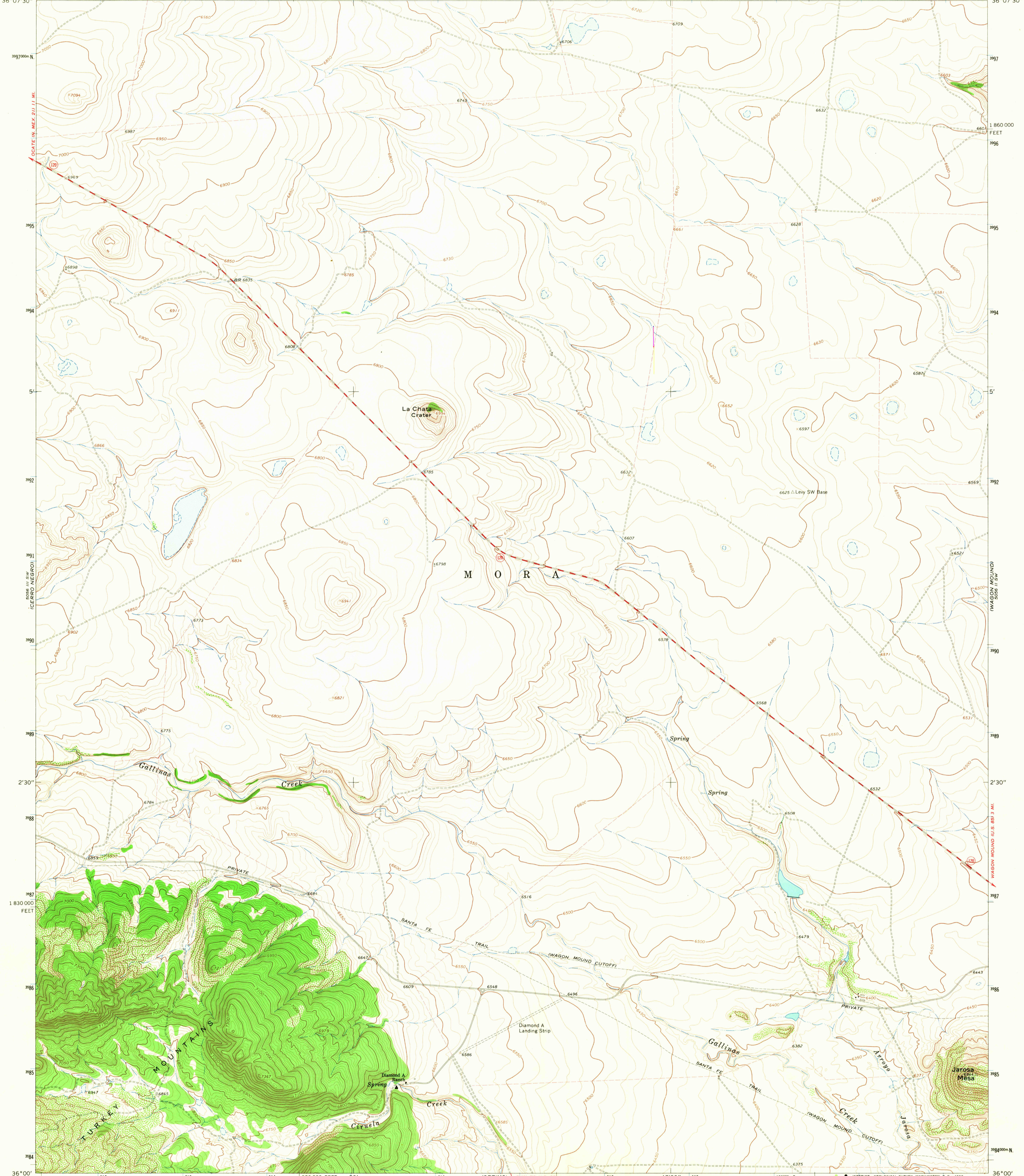
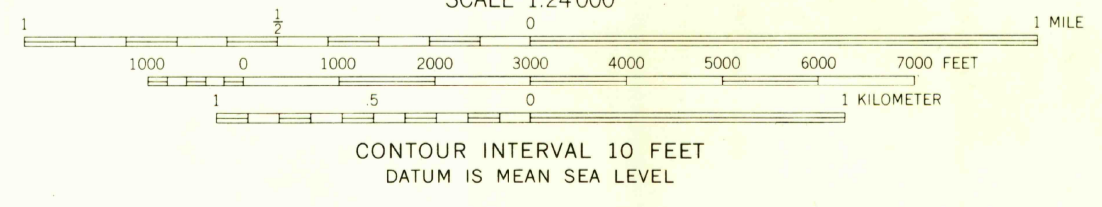
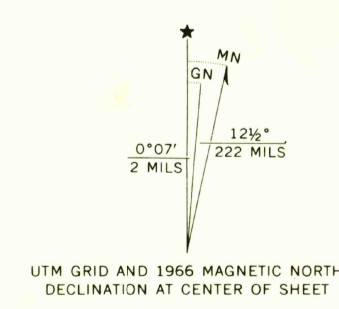


104° 52' 30" 1200000 E 50' 516 5056 III NE (CHARETTE LAKE) 518 47' 30" 519 520 370 000 FEET 521 104° 45' 36° 07' 30"



Mapped, edited, and published by the Geological Survey
Control by USGS and USC&GS
Topography by photogrammetric methods from aerial
photographs taken 1965. Field checked 1966.
Polyconic projection. 1927 North American datum
10,000-foot grid based on New Mexico coordinate system,
east zone
1000-meter Universal Transverse Mercator grid ticks,
zone 13, shown in blue
Fine red dashed lines indicate selected fence lines



CONTOUR INTERVAL 10 FEET
DATUM IS MEAN SEA LEVEL

USGS
Historical File
Topographic Division

U.S.G.S.
NEW MEXICO
FILE COPY
TOPOGRAPHIC DIVISION

ROAD CLASSIFICATION
Medium duty — Light duty
Unimproved dirt
State Route

THIS MAP COMPLIES WITH NATIONAL MAP ACCURACY STANDARDS
FOR SALE BY U. S. GEOLOGICAL SURVEY, DENVER, COLORADO 80225, OR WASHINGTON, D. C. 20542
A FOLDER DESCRIBING TOPOGRAPHIC MAPS AND SYMBOLS IS AVAILABLE ON REQUEST

LA CHATA CRATER, N. MEX.
N3600—W10445/7.5

1966
AMS 5056 III SE—SERIES V881

2795
DEC 1 1968