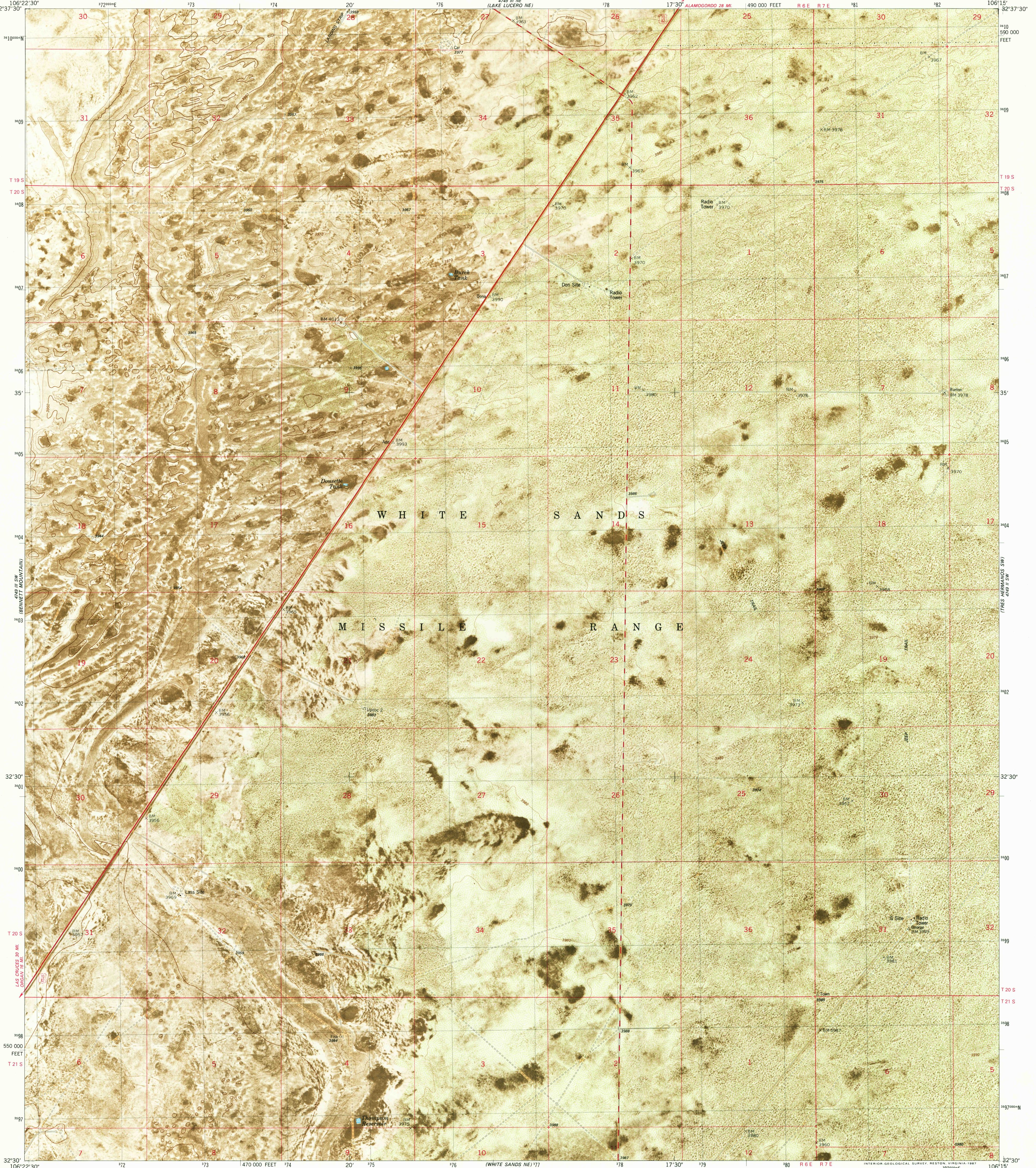


(POPE MOUNTAIN)
4748 III NW
(LAKE LUCERO)

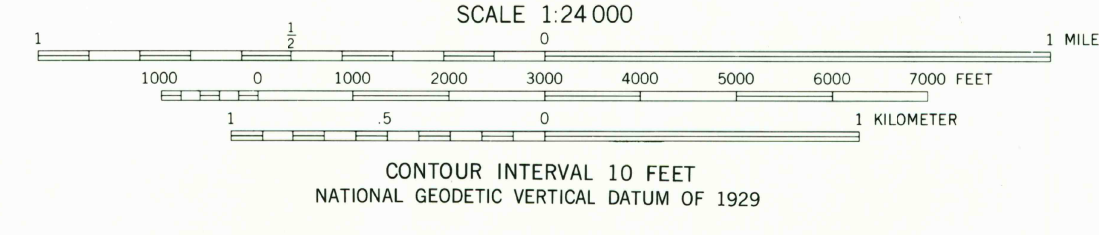
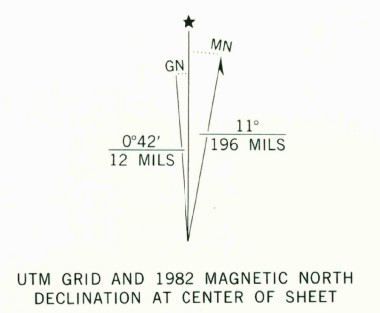
UNITED STATES
DEPARTMENT OF THE INTERIOR
GEOLOGICAL SURVEY

LAKE LUCERO SE QUADRANGLE
NEW MEXICO-OTERO CO.
7.5 MINUTE SERIES ORTHOPHOTOMAP (TOPOGRAPHIC)
SE/4 LAKE LUCERO 15' QUADRANGLE

(POPE MOUNTAIN)
4748 III NW
(FOSTER LAKE)



Mapped, edited, and published by the Geological Survey
Control by USGS, NOS/NOAA, and DMA
Topography by photogrammetric methods from aerial photographs taken 1972. Orthophotomosaic from aerial photographs taken 1971. Field checked 1975. Map edited 1982.
Projection and 10,000-foot grid ticks: New Mexico coordinate system, central zone (transverse Mercator) 1000-meter Universal Transverse Mercator grid, zone 13 1927 North American Datum
To place on the predicted North American Datum 1983 move the projection lines 6 meters south and 51 meters east as shown by dashed corner ticks
There may be private inholdings within the boundaries of the National or State reservations shown on this map



ROAD CLASSIFICATION

Primary highway, hard surface	Light-duty road, hard or improved surface
Secondary highway, hard surface	Unimproved road
Interstate Route	U. S. Route
	State Route

THIS MAP COMPLIES WITH NATIONAL MAP ACCURACY STANDARDS
FOR SALE BY U. S. GEOLOGICAL SURVEY, DENVER, COLORADO 80225, OR RESTON, VIRGINIA 22092
A FOLDER DESCRIBING TOPOGRAPHIC MAPS AND SYMBOLS IS AVAILABLE ON REQUEST



LAKE LUCERO SE, N. MEX.
SE/4 LAKE LUCERO 15' QUADRANGLE
32106-E3-OM-024
1982
DMA 4749 III SE-SERIES V881