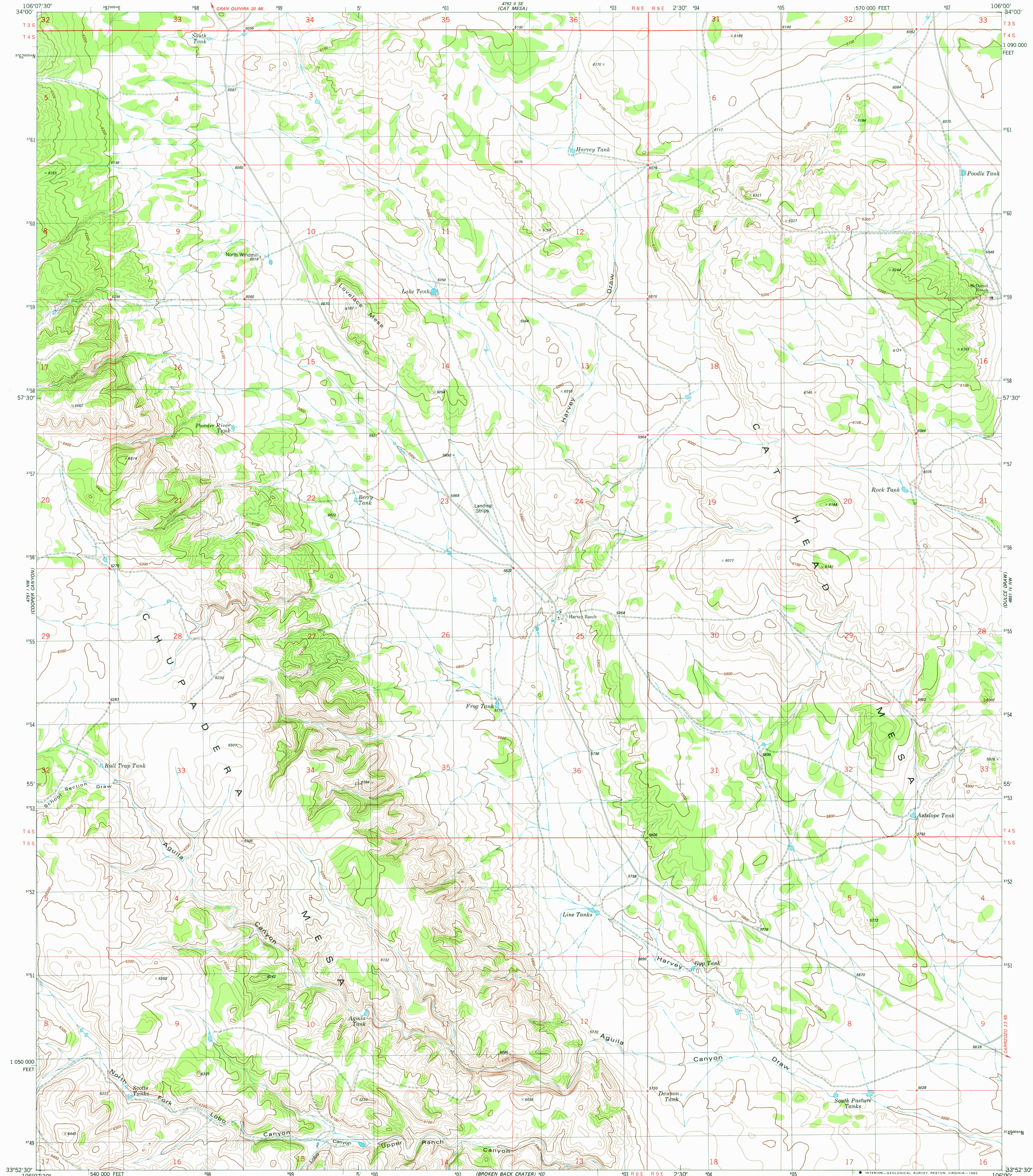


UNITED STATES
DEPARTMENT OF THE INTERIOR
GEOLOGICAL SURVEY

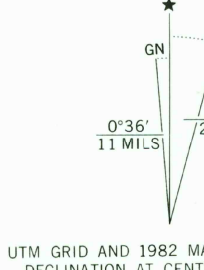
LOVELACE MESA QUADRANGLE
NEW MEXICO-SOCORRO CO
7.5 MINUTE SERIES (TOPOGRAPHIC)
NE/4 BROKEN BACK CRATER 15' QUADRANGLE



Mapped, edited, and published by the Geological Survey
Control by USGS and NOS/NOAA

Topography by photogrammetric methods from aerial photographs
taken 1972. Field checked 1974. Map edited 1982

Projection and 10,000-foot grid ticks: New Mexico
coordinate system, central zone (transverse Mercator)
1000-meter Universal Transverse Mercator grid, zone 13
1927 North American datum
To place on the predicted North American Datum 1983
move the projection lines 4 meters south and
51 meters east as shown by dashed corner ticks
Fine red dashed lines indicate selected fence lines



SCALE 1:24 000
1 000 0 1000 2000 3000 4000 5000 6000 7000 FEET
1 0 5 10 KILOMETER
CONTOUR INTERVAL 20 FEET
NATIONAL GEODETIC VERTICAL DATUM OF 1929



ROAD CLASSIFICATION
Primary highway, hard surface
Secondary highway, hard surface
Light-duty road, hard or improved surface
Unimproved road
Interstate Route
U. S. Route
State Route

LOVELACE MESA, N. MEX.
NE/4 BROKEN BACK CRATER 15' QUADRANGLE
N3352.5-W10600/7.5

1982

DMA 4751 I NE-SERIES V881

THIS MAP COMPLIES WITH NATIONAL MAP ACCURACY STANDARDS
FOR SALE BY U. S. GEOLOGICAL SURVEY, DENVER, COLORADO 80225, OR RESTON, VIRGINIA 22092
A FOLDER DESCRIBING TOPOGRAPHIC MAPS AND SYMBOLS IS AVAILABLE ON REQUEST

RETURN TO:
USGS AND HISTORICAL MAP ARCHIVE

AUG 13 1982