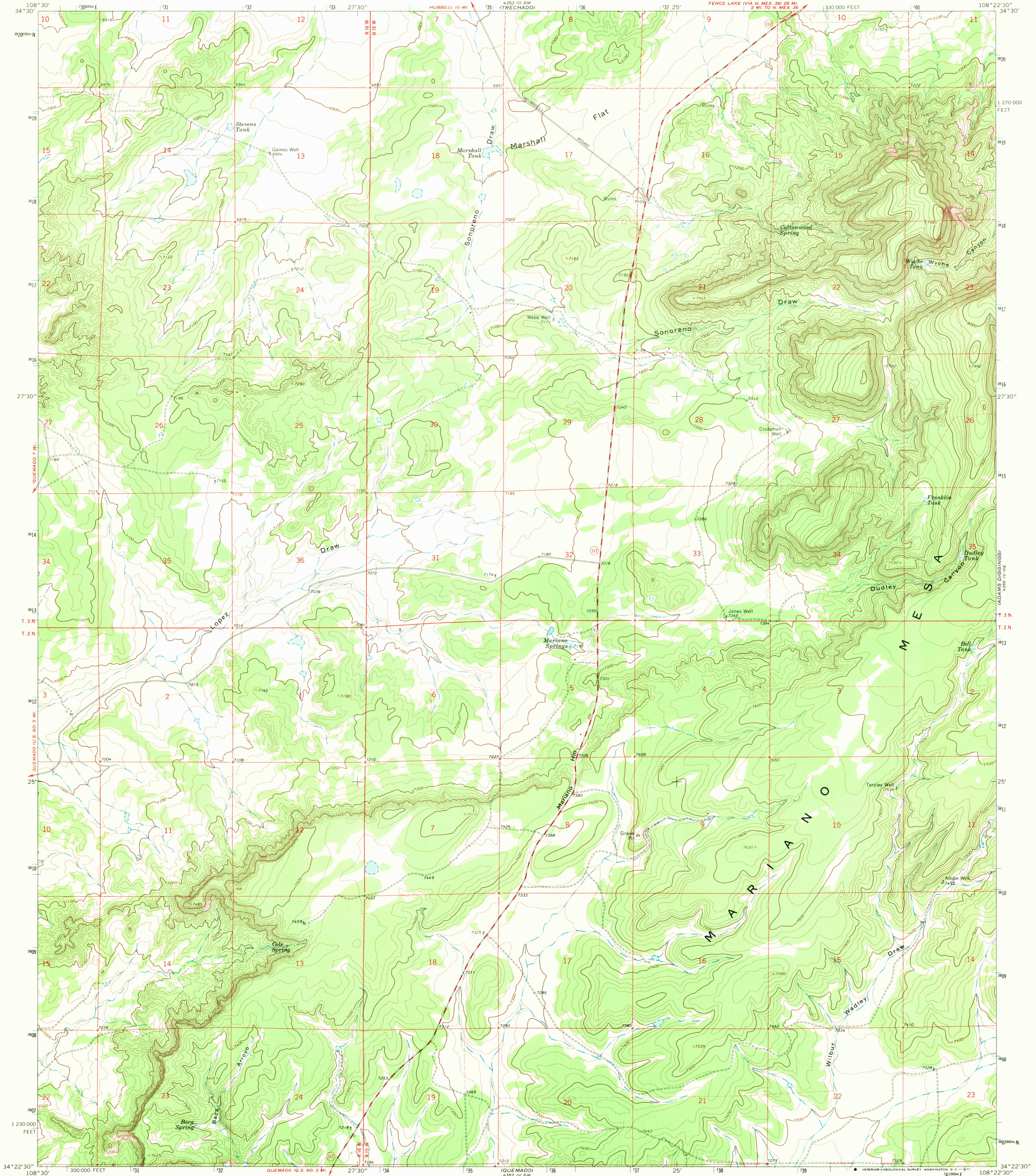
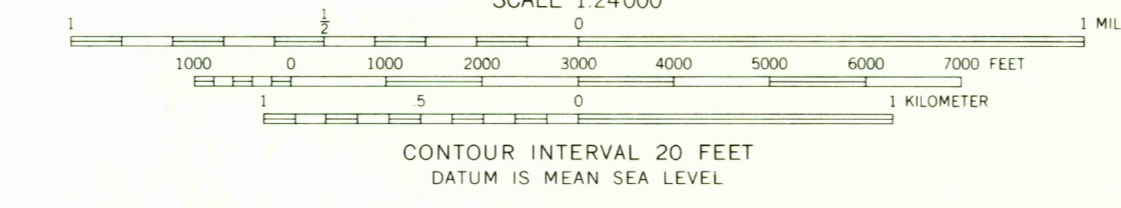
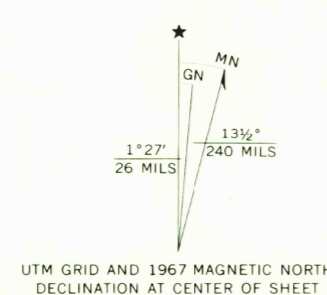


4352 IV NW  
WETHEAD MOUNTAIN



Mapped, edited, and published by the Geological Survey  
Control by USGS and USC&GS  
Topography by photogrammetric methods from aerial  
photographs taken 1966. Field checked 1967  
Polyconic projection. 1927 North American datum  
10,000-foot grid based on New Mexico coordinate system,  
west zone  
1000-meter Universal Transverse Mercator grid ticks,  
zone 12, shown in blue  
Fine red dashed lines indicate selected fence lines



ROAD CLASSIFICATION

Secondary highway, all weather, Light-duty road, all weather,  
hard surface

Unimproved road, fair or dry  
weather

State Route

THIS MAP COMPLIES WITH NATIONAL MAP ACCURACY STANDARDS  
FOR SALE BY U.S. GEOLOGICAL SURVEY, DENVER, COLORADO 80225, OR WASHINGTON, D.C. 20242  
A FOLDER DESCRIBING TOPOGRAPHIC MAPS AND SYMBOLS IS AVAILABLE ON REQUEST

U.S.G.S.  
FILE COPY  
TOPOGRAPHIC DIVISION

MARIANO SPRINGS, N. MEX.  
N3422.5—W10822.5/7.5  
1967  
AMS 4352 IV NW—SERIES V881

2285  
FEB 10 1971