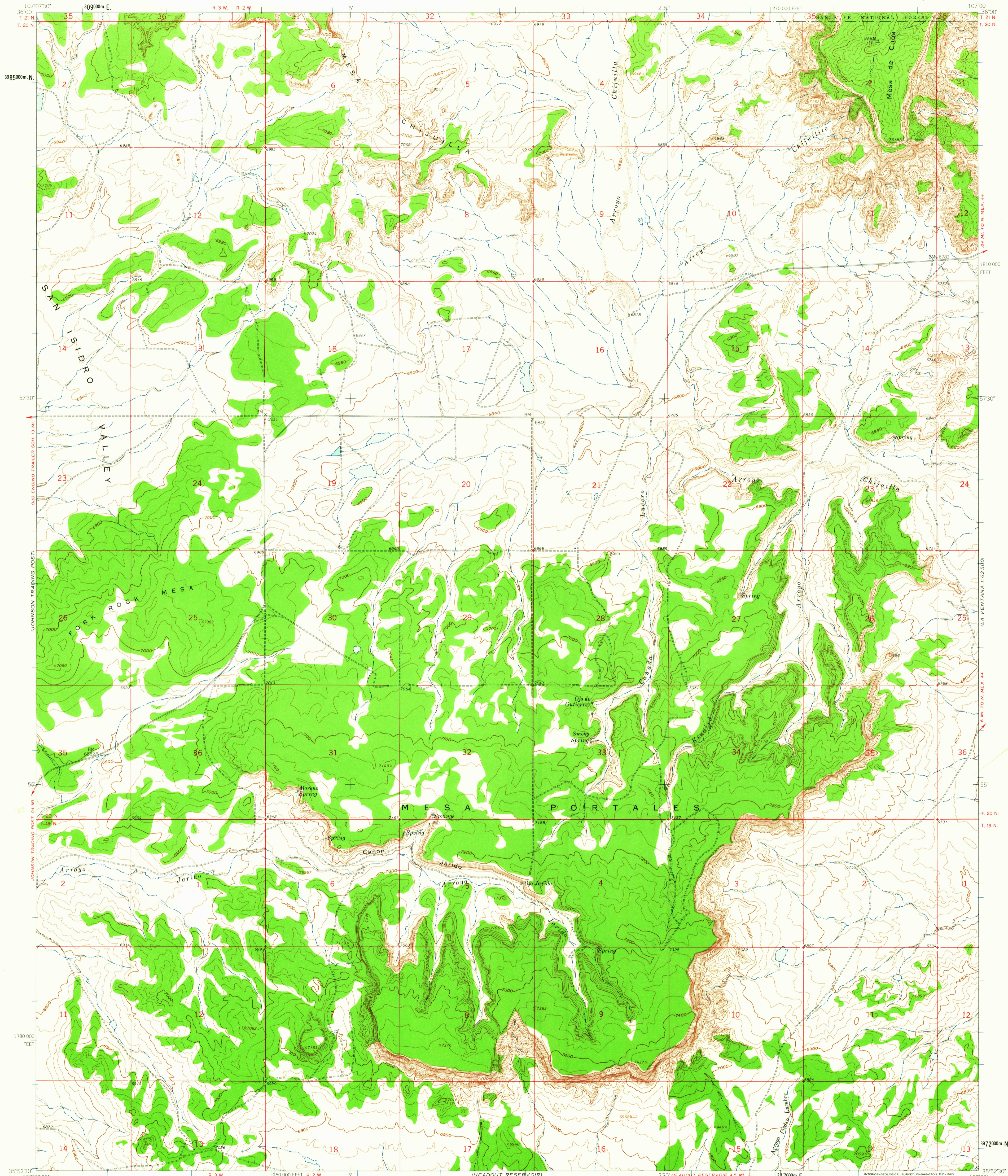


ICUBA 1:62,500

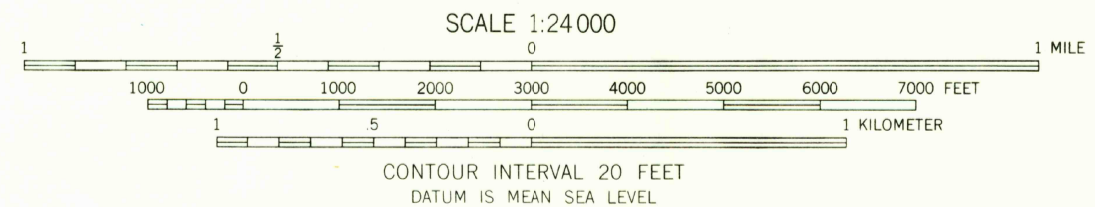
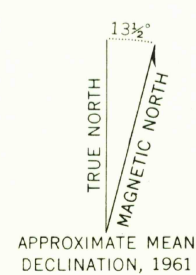


Mapped, edited, and published by the Geological Survey

Control by USGS and USC&GS

Topography by photogrammetric methods from aerial photographs taken 1958. Field checked 1961

Polyconic projection. 1927 North American datum. 10,000-foot grid based on New Mexico coordinate system, central zone. 1000-meter Universal Transverse Mercator grid ticks, zone 13, shown in blue.



USGS
Historical File
Topographic Division



ROAD CLASSIFICATION
Light-duty ——— Unimproved dirt - - - - -

THIS MAP COMPLIES WITH NATIONAL MAP ACCURACY STANDARDS
FOR SALE BY U.S. GEOLOGICAL SURVEY, DENVER 25, COLORADO OR WASHINGTON 25, D. C.
A FOLDER DESCRIBING TOPOGRAPHIC MAPS AND SYMBOLS IS AVAILABLE ON REQUEST

MESA PORTALES, N. MEX.
N3552.5-W10700/7.5

1961

NOV 19 1963
ICUBA 1:62,500

2090