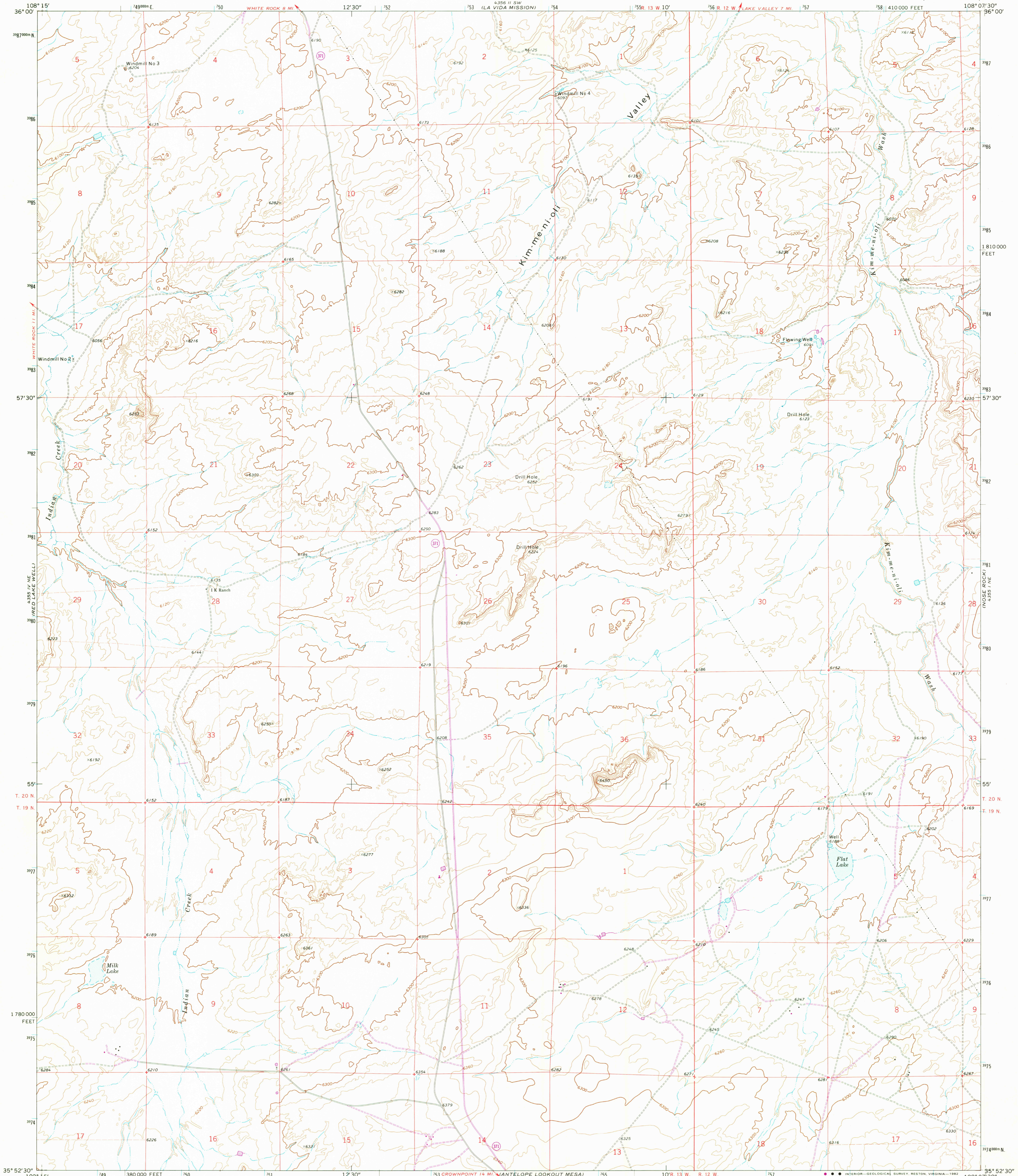


UNITED STATES  
DEPARTMENT OF THE INTERIOR  
GEOLOGICAL SURVEY

MILK LAKE QUADRANGLE  
NEW MEXICO—MC KINLEY CO.  
7.5 MINUTE SERIES (TOPOGRAPHIC)



Mapped, edited, and published by the Geological Survey

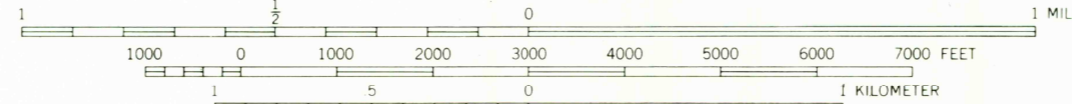
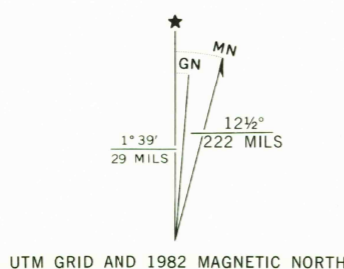
Control by USGS and NOS/NOAA

Topography by photogrammetric methods from aerial photographs taken 1969. Field checked 1970

Polycyclic projection. 10,000-foot grid ticks based on New Mexico coordinate system, west zone. 1000-meter Universal Transverse Mercator grid ticks, zone 12, shown in blue. 1927 North American Datum. To place on the predicted North American Datum 1983 move the projection lines 1 meter north and 56 meters east as shown by dashed corner ticks

Fine red dashed lines indicate selected fence and field lines where generally visible on aerial photographs. This information is unchecked

Revisions shown in purple and woodland compiled from aerial photographs taken 1978 and other sources. This information not field checked. Map edited 1982



CONTOUR INTERVAL 20 FEET  
NATIONAL GEODETIC VERTICAL DATUM OF 1929

THIS MAP COMPLIES WITH NATIONAL MAP ACCURACY STANDARDS  
FOR SALE BY U. S. GEOLOGICAL SURVEY, DENVER, COLORADO 80225, OR RESTON, VIRGINIA 22092  
A FOLDER DESCRIBING TOPOGRAPHIC MAPS AND SYMBOLS IS AVAILABLE ON REQUEST



ROAD CLASSIFICATION

Primary highway, hard surface	Light-duty road, hard or improved surface
Secondary highway, hard surface	Unimproved road
Interstate Route	U. S. Route
	State Route

MILK LAKE, N. MEX.  
N3552.5—W10807.5/7.5

1970  
PHOTOREVISED 1982  
DMA 4355 I NW—SERIES V881

RETURN TO:  
USGS NHD HISTORICAL MAP ARCHIVES

SEP 1982

2050