

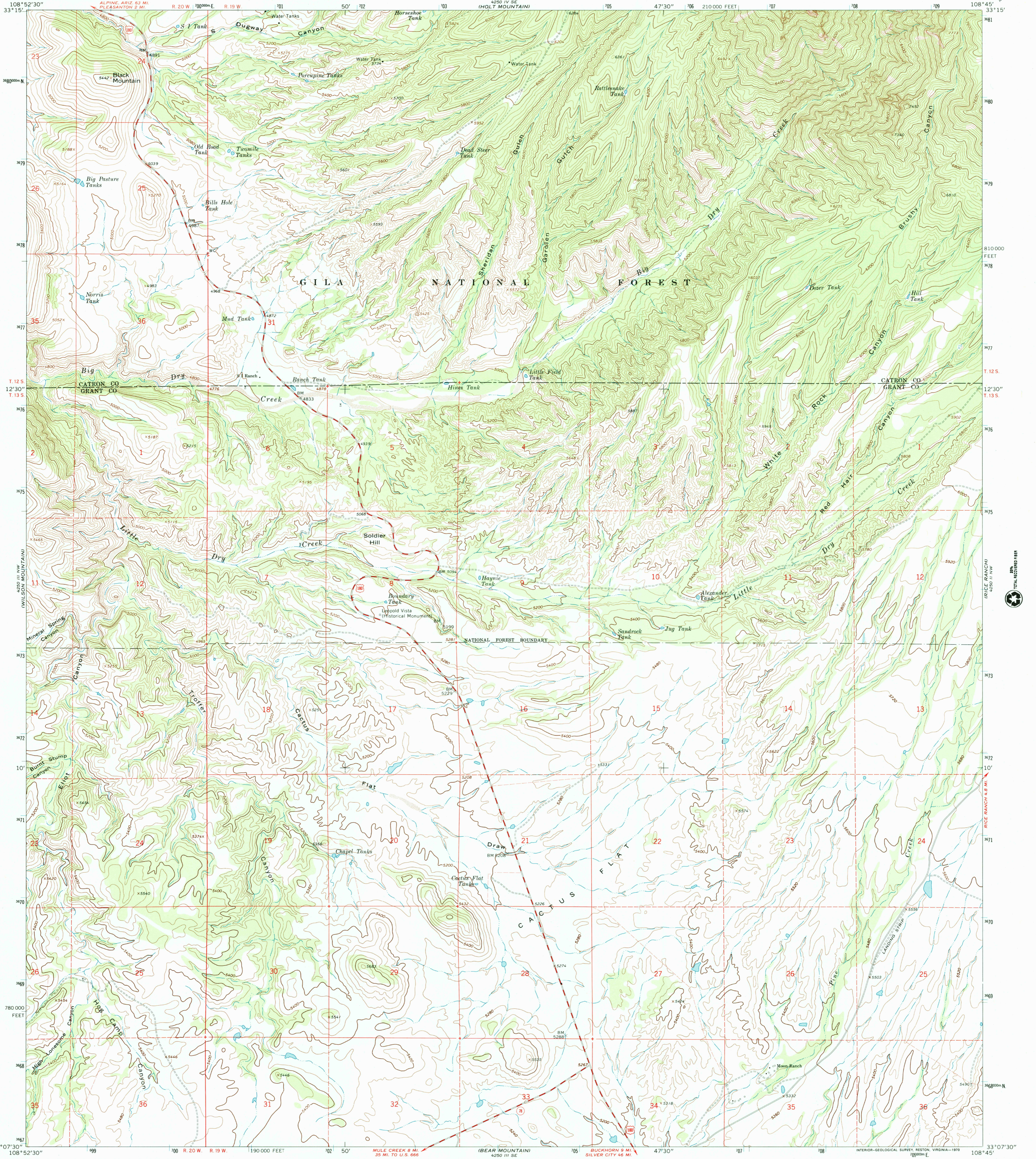
4250 III NW
GREENWOOD

USGS
science for a changing world

U.S. DEPARTMENT OF THE INTERIOR
U.S. GEOLOGICAL SURVEY

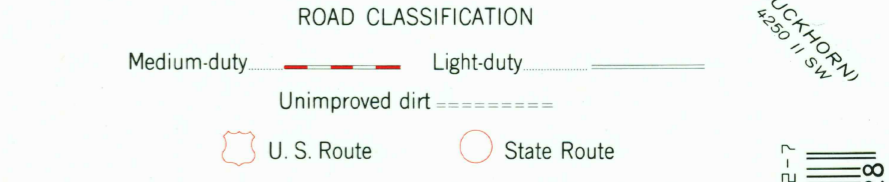
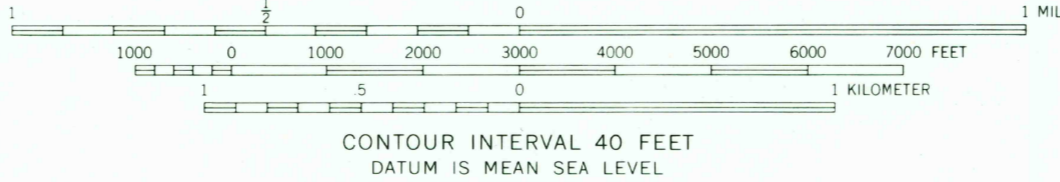
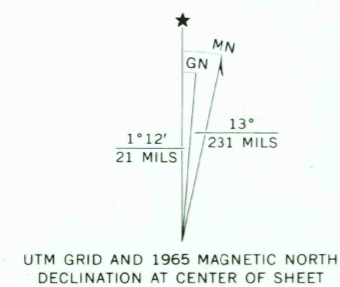
MOON RANCH QUADRANGLE
NEW MEXICO
7.5 MINUTE SERIES (TOPOGRAPHIC)

4250 I NW
HOOPER MOUNTAIN



4250 III NW
MULE CREEK

Mapped, edited, and published by the Geological Survey
Control by USGS and USC&GS
Topography by photogrammetric methods from aerial
photographs taken 1964. Field checked 1965
Polyconic projection. 1927 North American datum.
10,000-foot grid based on New Mexico coordinate system,
west zone
1000-meter Universal Transverse Mercator grid ticks,
zone 12, shown in blue
Fine red dashed lines indicate selected fence lines
Certain land lines are omitted because of insufficient data



RECEIVED
MAR 31 2001

MOON RANCH, N. MEX.
N3307.5-W10845/7.5

1965

AMS 4250 III NE—SERIES V881

THIS MAP COMPLIES WITH NATIONAL MAP ACCURACY STANDARDS
FOR SALE BY U.S. GEOLOGICAL SURVEY, P.O. BOX 25286, DENVER, COLORADO 80225
A FOLDER DESCRIBING TOPOGRAPHIC MAPS AND SYMBOLS IS AVAILABLE ON REQUEST

HISTORICAL MAP ARCHIVES

ISBN 0-607-37482-7
9 780607 374828