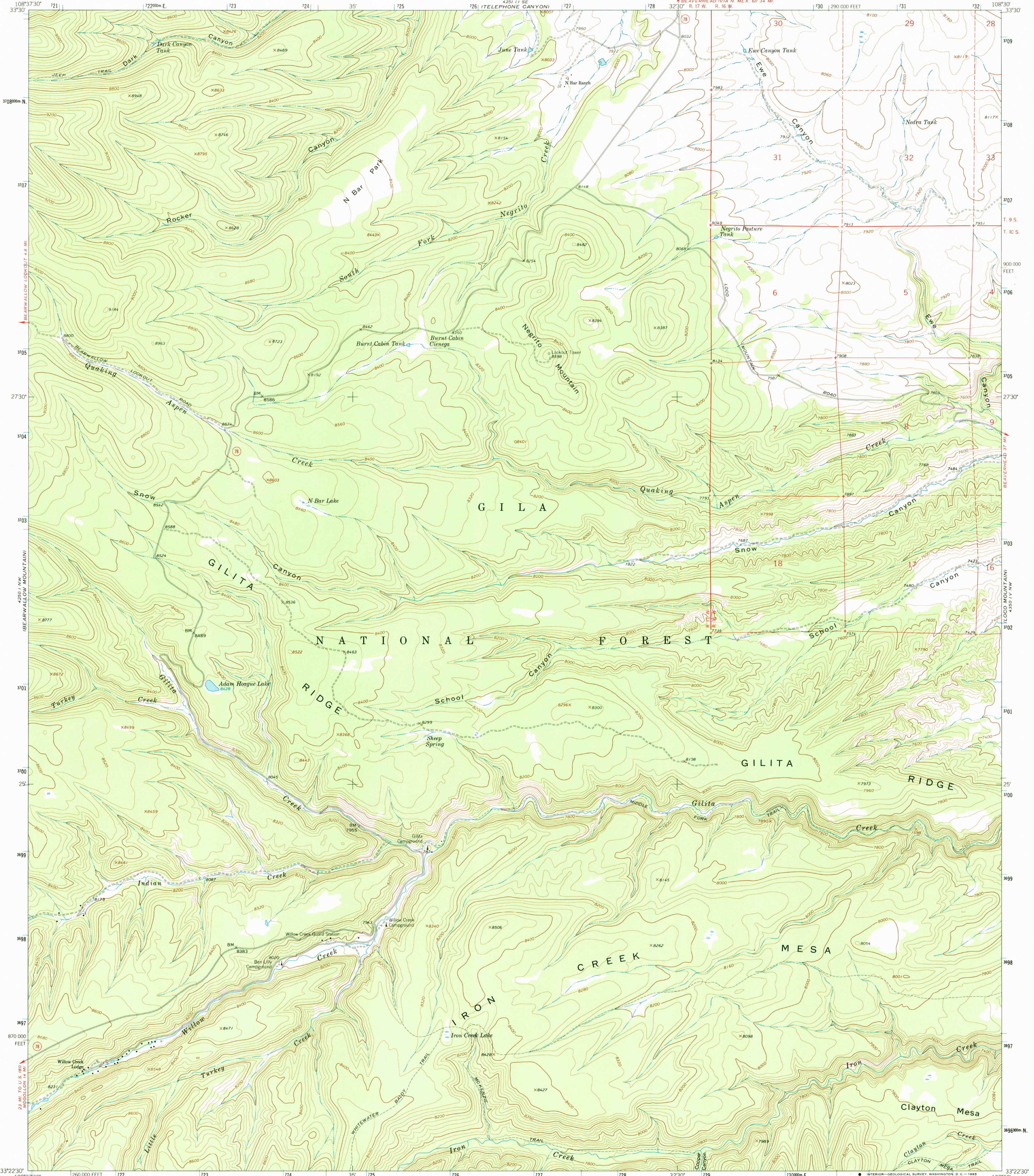


4250 / NW  
BEARWALLOW MOUNTAIN

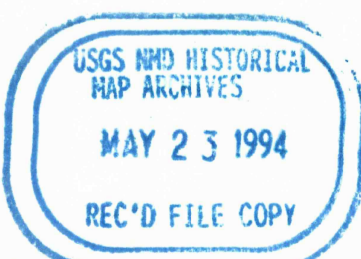
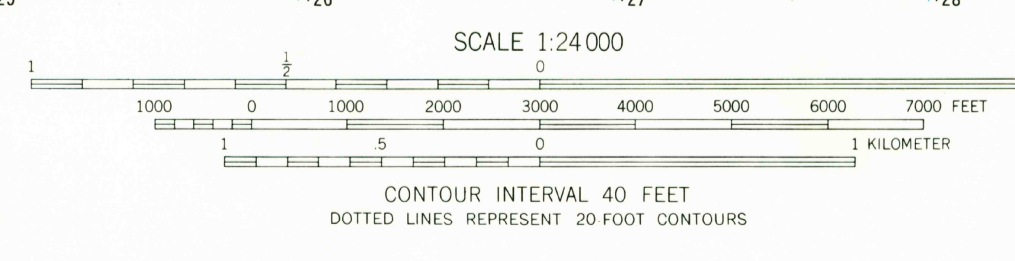
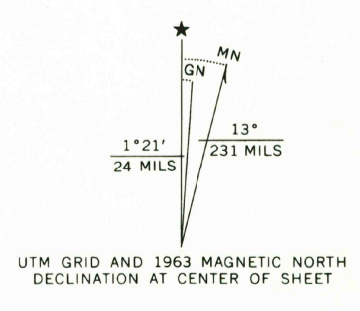
UNITED STATES  
DEPARTMENT OF THE INTERIOR  
GEOLOGICAL SURVEY

NEGRITO MOUNTAIN QUADRANGLE  
NEW MEXICO-CATRON CO.  
7.5 MINUTE SERIES (TOPOGRAPHIC)

4250 / NW  
TLOCO MOUNTAIN



Mapped by the U.S. Forest Service  
 Edited and published by the Geological Survey  
 Control by USGS, USC&GS, and USFS  
 Topography by photogrammetric methods from aerial  
 photographs taken 1958. Field checked by USGS 1963  
 Polyconic projection. 1927 North American datum  
 10,000 foot grid based on New Mexico coordinate system, west zone  
 1000 meter Universal Transverse Mercator grid ticks,  
 zone 12, shown in blue  
 Where omitted, land lines have not been established or are  
 not shown because of insufficient data



ROAD CLASSIFICATION  
 Light-duty ——— Unimproved dirt - - - - -  
 State Route ○

NEGRITO MOUNTAIN, N. MEX.  
 N3322 5-W10830/7.5

THIS MAP COMPLIES WITH NATIONAL MAP ACCURACY STANDARDS  
 FOR SALE BY U.S. GEOLOGICAL SURVEY, DENVER, COLORADO 80225, OR RESTON, VIRGINIA 22092  
 A FOLDER DESCRIBING TOPOGRAPHIC MAPS AND SYMBOLS IS AVAILABLE ON REQUEST

1963  
 AMS 4250 1 NE-SERIES V681