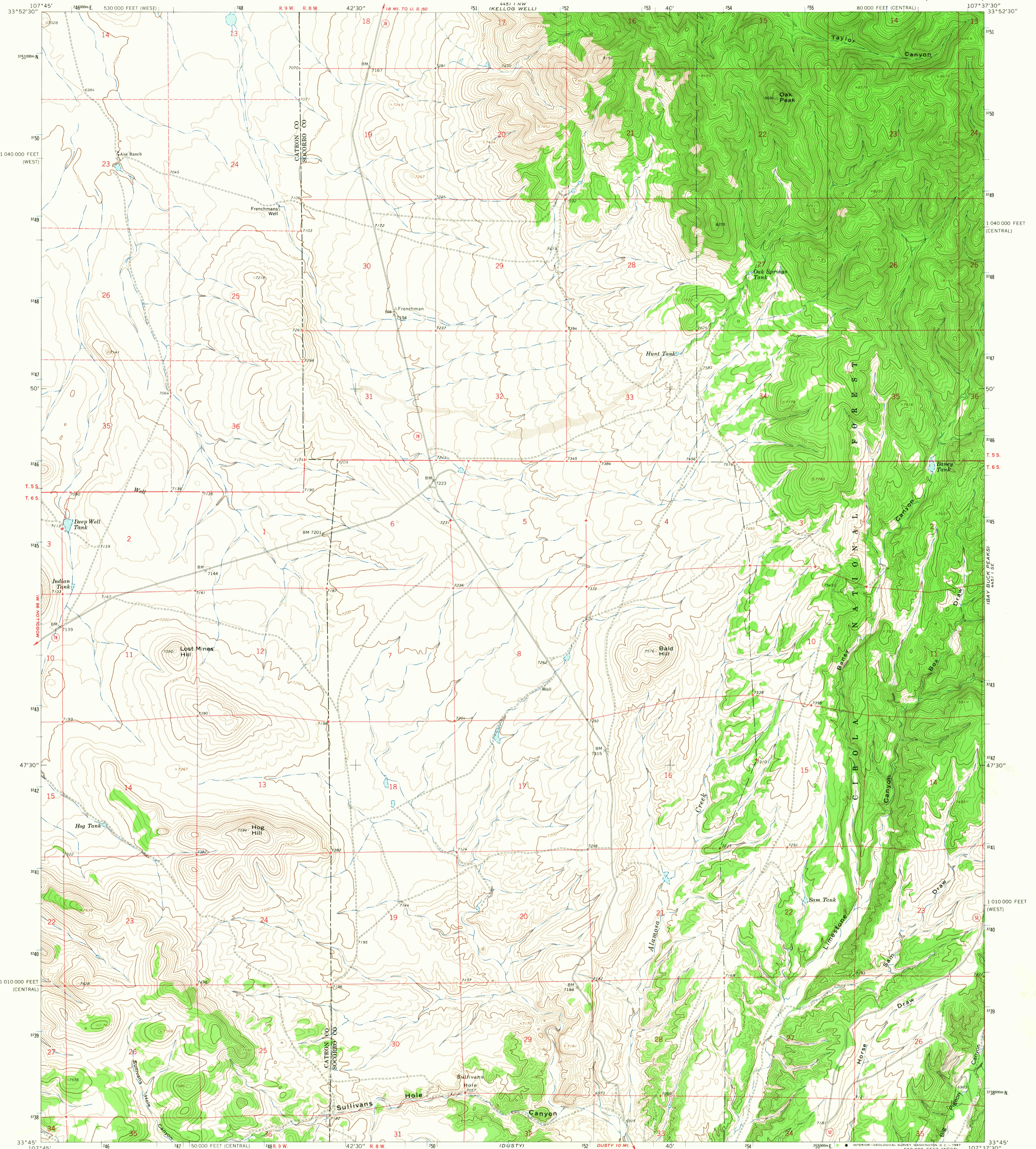
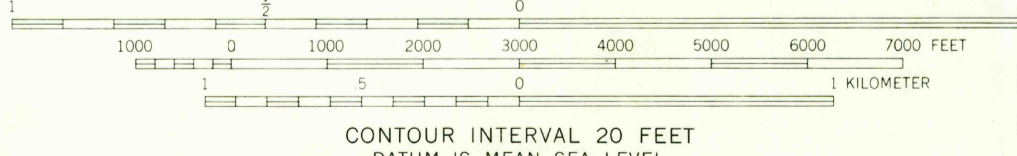
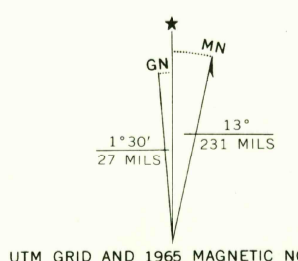


441 1 NE
MONICA SADDLE



Mapped by the U. S. Forest Service
Edited and published by the Geological Survey
Control by USGS, USC&GS, and U. S. Forest Service
Topography by photogrammetric methods from aerial
photographs taken 1960. Field checked by USGS 1965
Polyconic projection. 1927 North American datum
10,000-foot grids based on New Mexico coordinate system,
central and west zones
1000-meter Universal Transverse Mercator grid ticks,
zone 13, shown in blue



CONTOUR INTERVAL 20 FEET
DATUM IS MEAN SEA LEVEL

USGS
Historical File
Topographic Division



ROAD CLASSIFICATION
Light-duty ————— Unimproved dirt - - - - -
○ State Route

THIS MAP COMPLIES WITH NATIONAL MAP ACCURACY STANDARDS
FOR SALE BY U. S. GEOLOGICAL SURVEY, DENVER, COLORADO 80225, OR WASHINGTON, D. C. 20242
A FOLDER DESCRIBING TOPOGRAPHIC MAPS AND SYMBOLS IS AVAILABLE ON REQUEST

U.S.G.S.
TOPOGRAPHIC DIVISION

OAK PEAK, N. MEX.
N3345-W10737.5/7.5
1965
AMS 4411 1 SW-SERIES 9881

AUG 23 1967