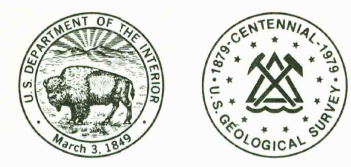


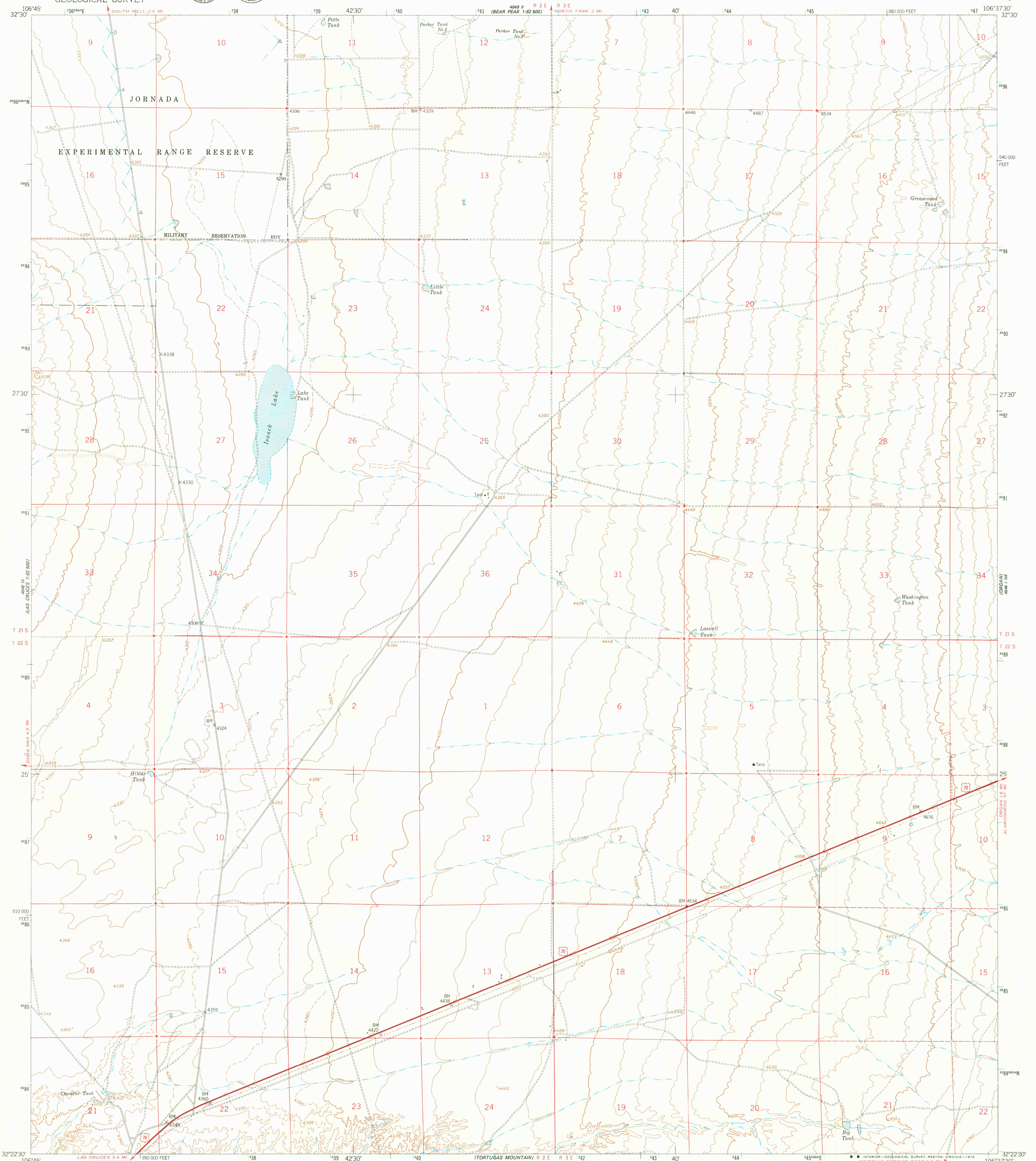
Map # 4648 I NE (1:25,000)

UNITED STATES DEPARTMENT OF THE INTERIOR GEOLOGICAL SURVEY



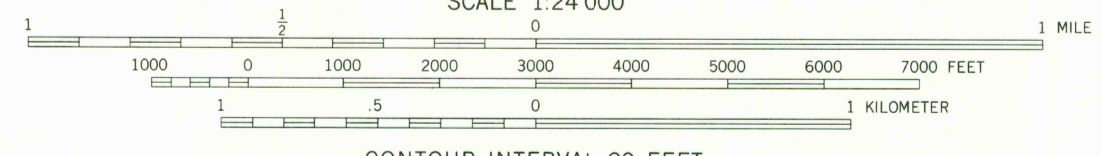
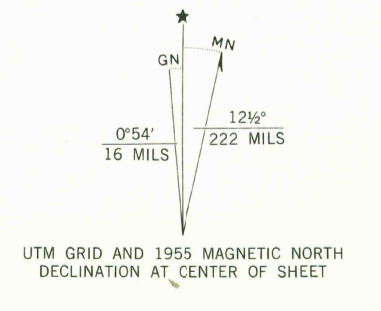
ORGAN PEAK NW QUADRANGLE NEW MEXICO-DOÑA ANA CO. 7.5 MINUTE SERIES (TOPOGRAPHIC)

Map # 4648 I NE (1:25,000)



Map # 4648 I NE (1:25,000)

Mapped by the Army Map Service... Control by USGS, USC&GS, and USCE... Topography from aerial photographs by photogrammetric methods... Aerial photographs taken 1952. Photography field annotated 1955... Polyconic projection, 1927 North American datum... 10,000-foot grid based on New Mexico coordinate system, central zone... 1000-meter Universal Transverse Mercator grid ticks, zone 13, shown in blue... Dashed land lines indicate approximate locations... There may be private inholdings within the boundaries of the National or State reservations shown on this map



CONTOUR INTERVAL 20 FEET DASHED LINES REPRESENT 5 AND 10 FOOT CONTOURS NATIONAL GEODETIC VERTICAL DATUM OF 1929



ROAD CLASSIFICATION Heavy-duty Light-duty Unimproved dirt U.S. Route

THIS MAP COMPLIES WITH NATIONAL MAP ACCURACY STANDARDS FOR SALE BY U. S. GEOLOGICAL SURVEY, DENVER, COLORADO 80225, OR RESTON, VIRGINIA 22092 A FOLDER DESCRIBING TOPOGRAPHIC MAPS AND SYMBOLS IS AVAILABLE ON REQUEST

USGS Historical File Topographic Division

ORGAN PEAK NW, N. MEX. N3222.5-W10637.5/7.5 1955 DMA 4648 I NE-SERIES V881

JAN - 8 1980

Handwritten initials 'goc'