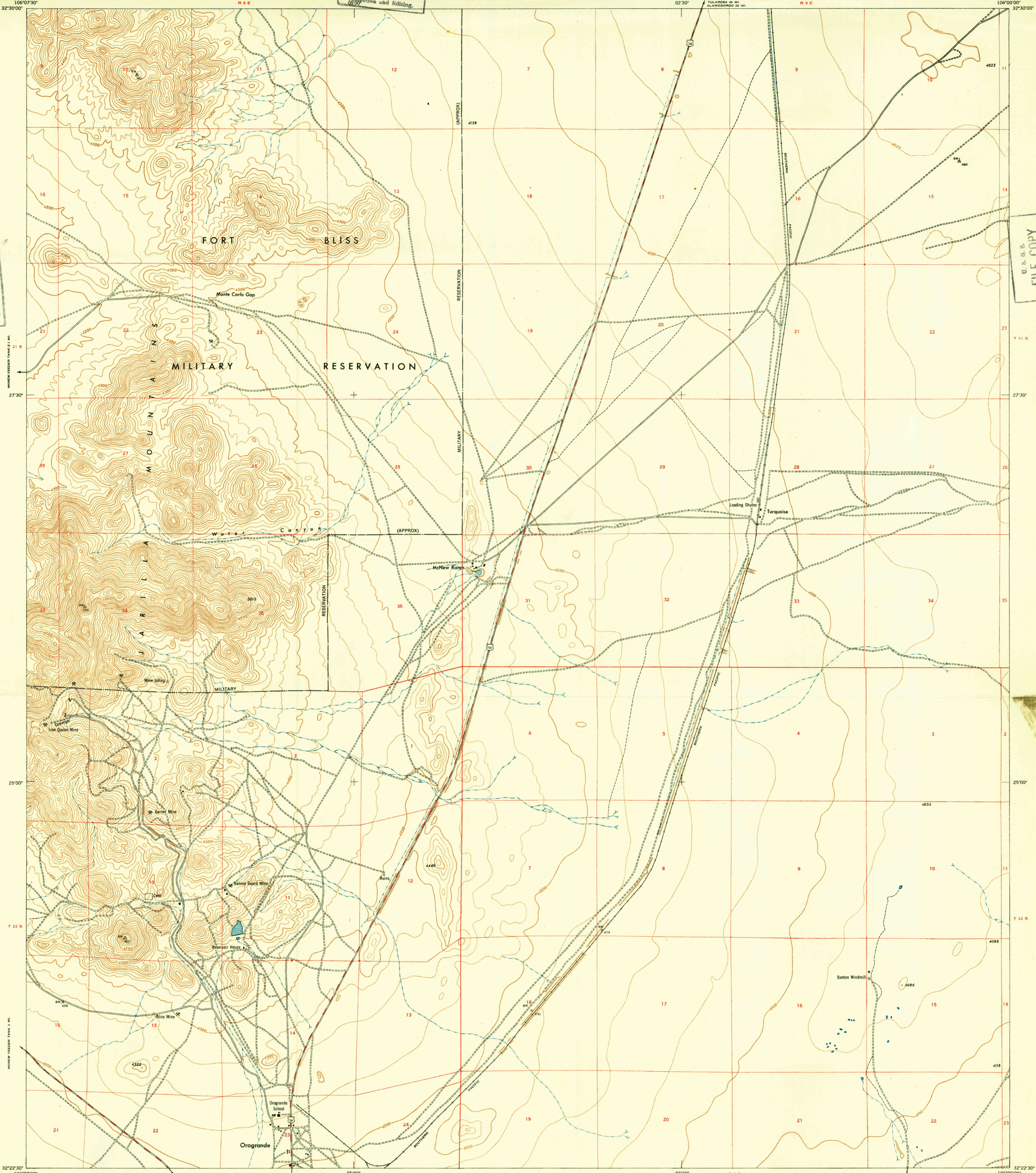


FILE COPY
Inspection and Editing

U.S.G.S.
FILE COPY
Inspection and Editing

U.S.G.S.
FILE COPY
Inspection and Editing

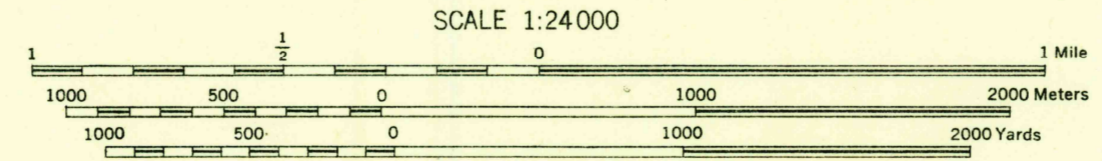


A.M.S. V881
Type F (AMS 1), 1947.

Prepared under the direction of the Chief of Engineers by the Army Map Service (AM), War Department, Washington, D. C. Compiled in 1947 from New Mexico, 1:62,500, USGS, Orogrande, 1943. Planimetric detail revised from aerial photography by U. S. Army Air Force, 1944. Horizontal and vertical control by USGS and USACGS. Public land survey lines are based on the New Mexico Principal Meridian. Planimetry field edited, 1947.

LEGEND

- ROAD DATA 1947**
- Hard surface, heavy duty road, more than two lanes wide
 - Hard surface, heavy duty road, two lanes wide; Federal route marker
 - Hard surface, medium duty road, more than two lanes wide
 - Hard surface, medium duty road, two lanes wide; State route marker
 - Loose surface, graded and drained, or narrow hard surface road
 - Improved dirt road
 - Unimproved dirt road
 - Trail
- RAILROADS**
- Standard gauge
 - Narrow gauge
 - Railroad in street
 - Carline
- BOUNDARIES**
- National
 - State (with monument)
 - County
 - County subdivision
 - Corporate limits
- Other Features:**
- Horizontal control point
 - Bench mark, monumented
 - Bench mark, non-monumented
 - Spot elevation in feet
 - Cemetery
 - Woods or brushwood
 - Orchard
 - Vineyard
 - Intermittent lake
 - Intermittent stream; Dam
 - Swamp, marsh



CONTOUR INTERVAL 25 FEET
DATUM IS MEAN SEA LEVEL

TRANSVERSE MERCATOR PROJECTION
1927 NORTH AMERICAN DATUM

REPRINTED FROM MILITARY EDITION FOR CIVIL USE
PENDING REVISION FOR STANDARD ISSUE
SOLD AND DISTRIBUTED BY U. S. GEOLOGICAL SURVEY, WASHINGTON 25, D. C.

TRUE NORTH
MAGNETIC NORTH
APPROXIMATE MEAN DECLINATION, 1947

INDEX TO ADJOINING SHEETS

106°15'00"	106°07'30"	106°00'00"	105°52'30"
32°30'00"	32°22'30"	32°15'00"	32°07'30"

Sheet 4748 I NE falls within NI 13-10.
AMS 1902: 1:250,000

U.S.G.S.
Historical File
Topographic Division

10-27-48
2168