

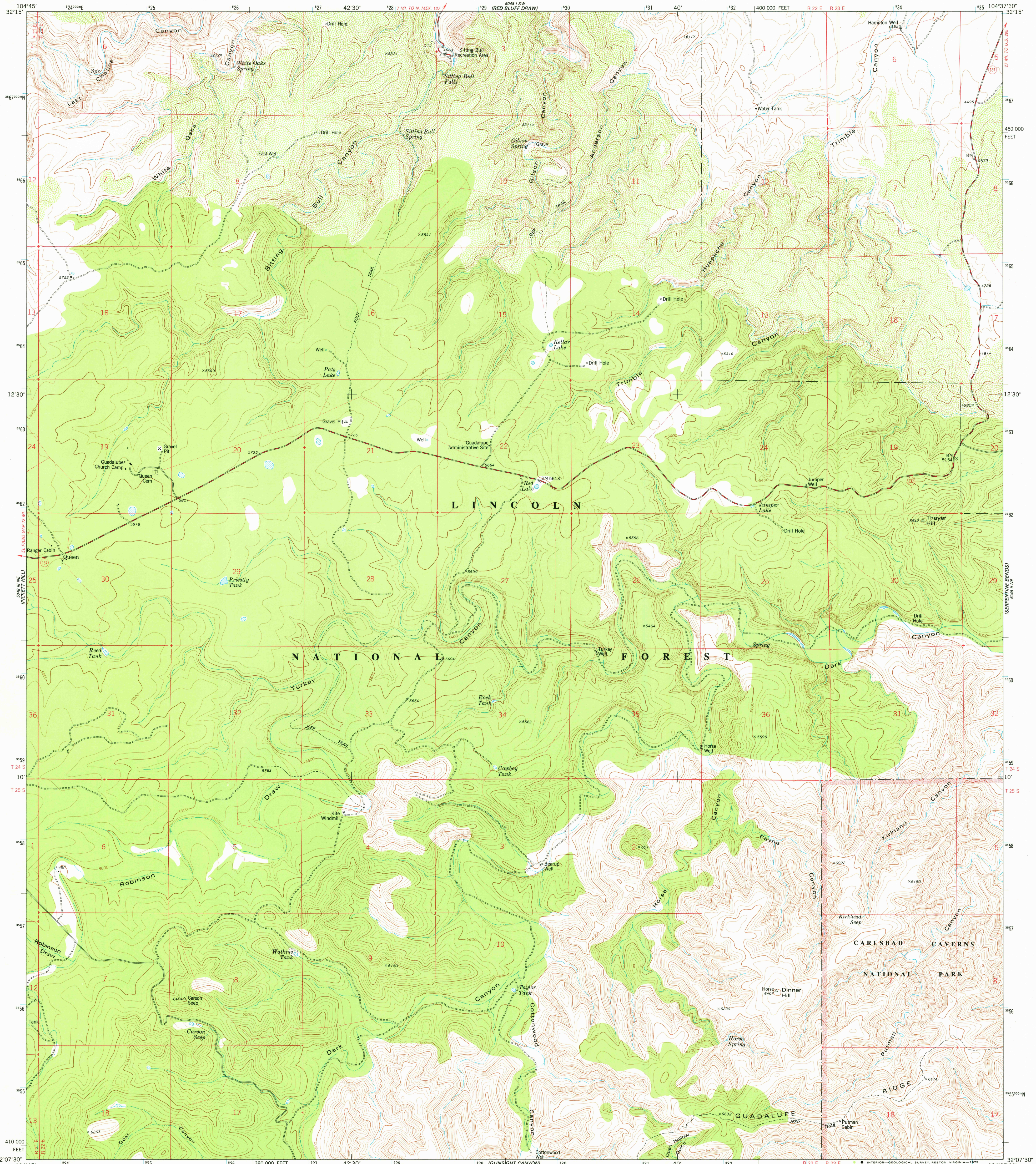
5048 I SW  
MAPS PLAN

UNITED STATES  
DEPARTMENT OF THE INTERIOR  
GEOLOGICAL SURVEY



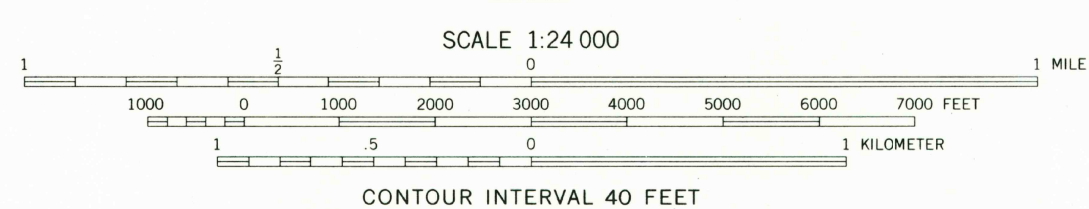
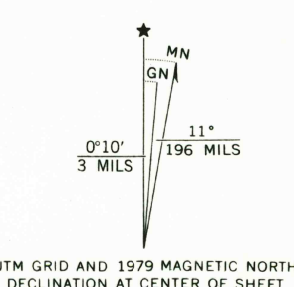
QUEEN QUADRANGLE  
NEW MEXICO—EDDY CO.  
7.5 MINUTE SERIES (TOPOGRAPHIC)  
NW/4 CARLSBAD CAVERNS WEST 15' QUADRANGLE

5048 I SE  
(BANDANA POINT)



5048 I NE  
(PICKET HILL)

Mapped, edited, and published by the Geological Survey  
Control by the USGS and NOS/NOAA  
Topography by photogrammetric methods from aerial photographs  
taken 1972. Field checked 1974. Map edited 1979  
Projection and 10,000-foot grid ticks: New Mexico  
coordinate system, east zone (transverse Mercator)  
1000-meter Universal Transverse Mercator grid ticks,  
zone 13, shown in blue. 1927 North American datum  
Fine red dashed lines indicate selected fence lines  
Where omitted, land lines have not been established  
There may be private inholdings within the boundaries of the  
National or State reservations shown on this map



CONTOUR INTERVAL 40 FEET  
NATIONAL GEODETIC VERTICAL DATUM OF 1929



ROAD CLASSIFICATION

Primary highway, hard surface	Light duty road, hard or improved surface
Secondary highway, hard surface	Unimproved road
Interstate Route	U. S. Route
	State Route

USGS  
Historical File  
Topographic Division

QUEEN, N. MEXICO  
NW/4 CARLSBAD CAVERNS WEST 15' QUADRANGLE  
N3207.5—W10437.5/7.5

1979  
DMA 5048 II NW—SERIES Y881

THIS MAP COMPLIES WITH NATIONAL MAP ACCURACY STANDARDS  
FOR SALE BY U. S. GEOLOGICAL SURVEY, DENVER, COLORADO 80225, OR RESTON, VIRGINIA 22092  
A FOLDER DESCRIBING TOPOGRAPHIC MAPS AND SYMBOLS IS AVAILABLE ON REQUEST

SEP 18 1979  
2200