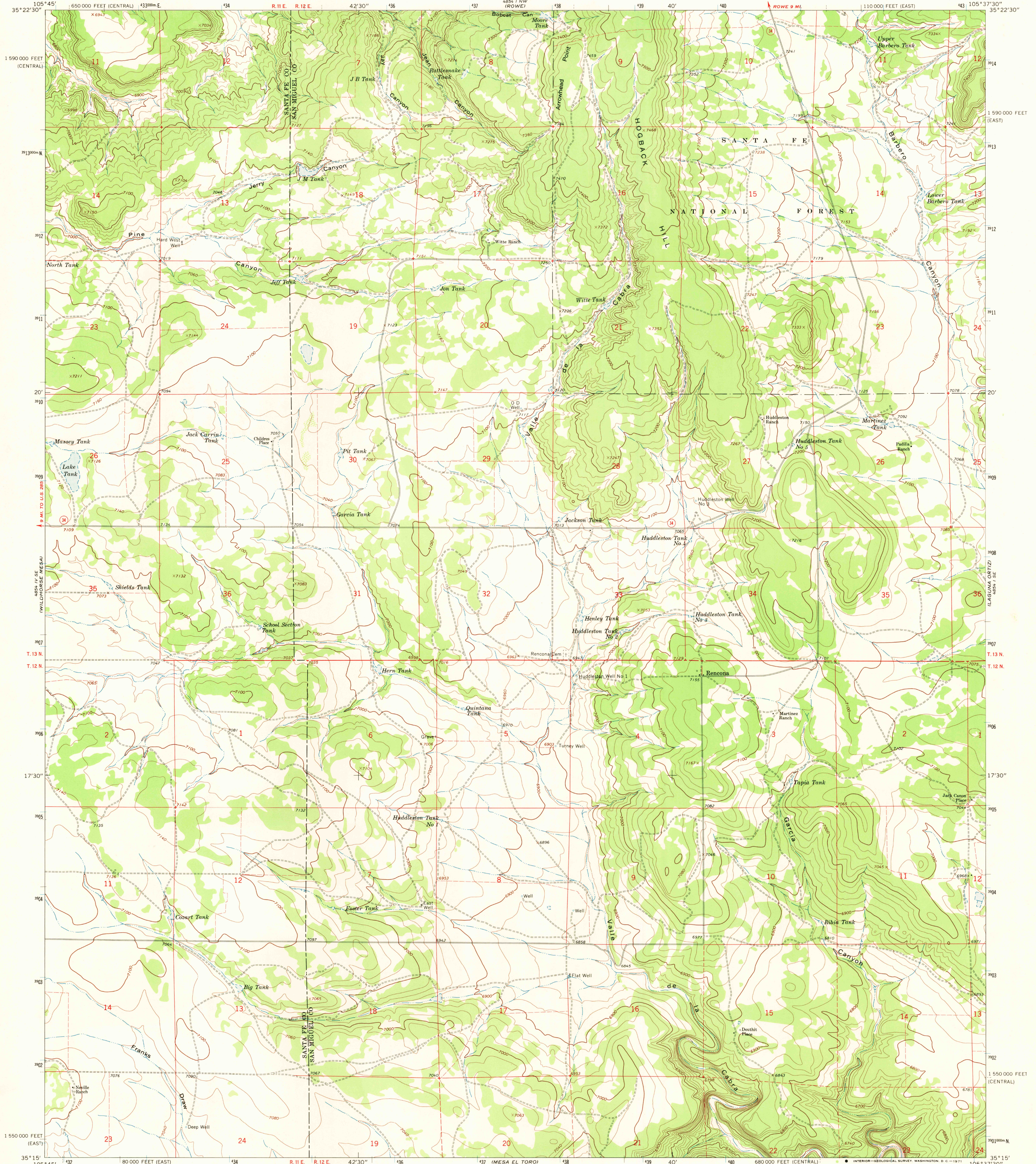
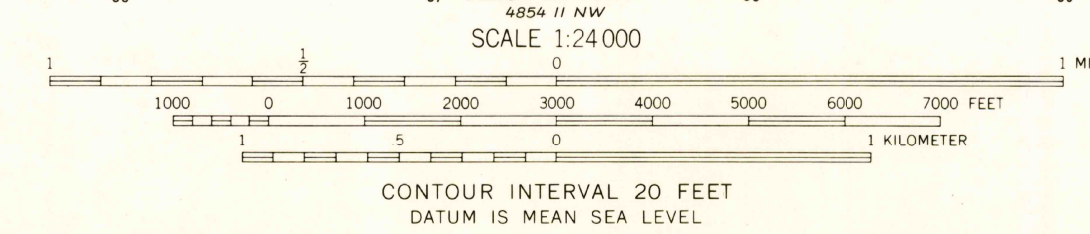
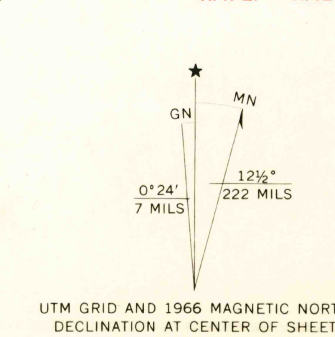


UNITED STATES  
DEPARTMENT OF THE INTERIOR  
GEOLOGICAL SURVEY

RENCONA QUADRANGLE  
NEW MEXICO  
7.5 MINUTE SERIES (TOPOGRAPHIC)



Mapped, edited, and published by the Geological Survey  
Control by USGS and USC&GS  
Topography by photogrammetric methods from aerial  
photographs taken 1964. Field checked 1966  
Polyconic projection. 1927 North American datum  
10,000-foot grids based on New Mexico coordinate system,  
east and central zones  
1000-meter Universal Transverse Mercator grid ticks,  
zone 13, shown in blue  
Fine red dashed lines indicate selected fence lines



USGS  
HISTORICAL FILE  
TOPOGRAPHIC DIVISION

NEW MEXICO  
QUADRANGLE LOCATION

ROAD CLASSIFICATION  
Light-duty  
Unimproved dirt  
State Route

U.S.G.S.  
FILE COPY  
TOPOGRAPHIC DIVISION

RENCONA, N. MEX.  
N3515-W10537.5/7.5  
FEB 2 1971

THIS MAP COMPLIES WITH NATIONAL MAP ACCURACY STANDARDS  
FOR SALE BY U.S. GEOLOGICAL SURVEY, DENVER, COLORADO 80225, OR WASHINGTON, D. C. 20242  
A FOLDER DESCRIBING TOPOGRAPHIC MAPS AND SYMBOLS IS AVAILABLE ON REQUEST

1966  
AMS 4854 1 SW-SERIES V881