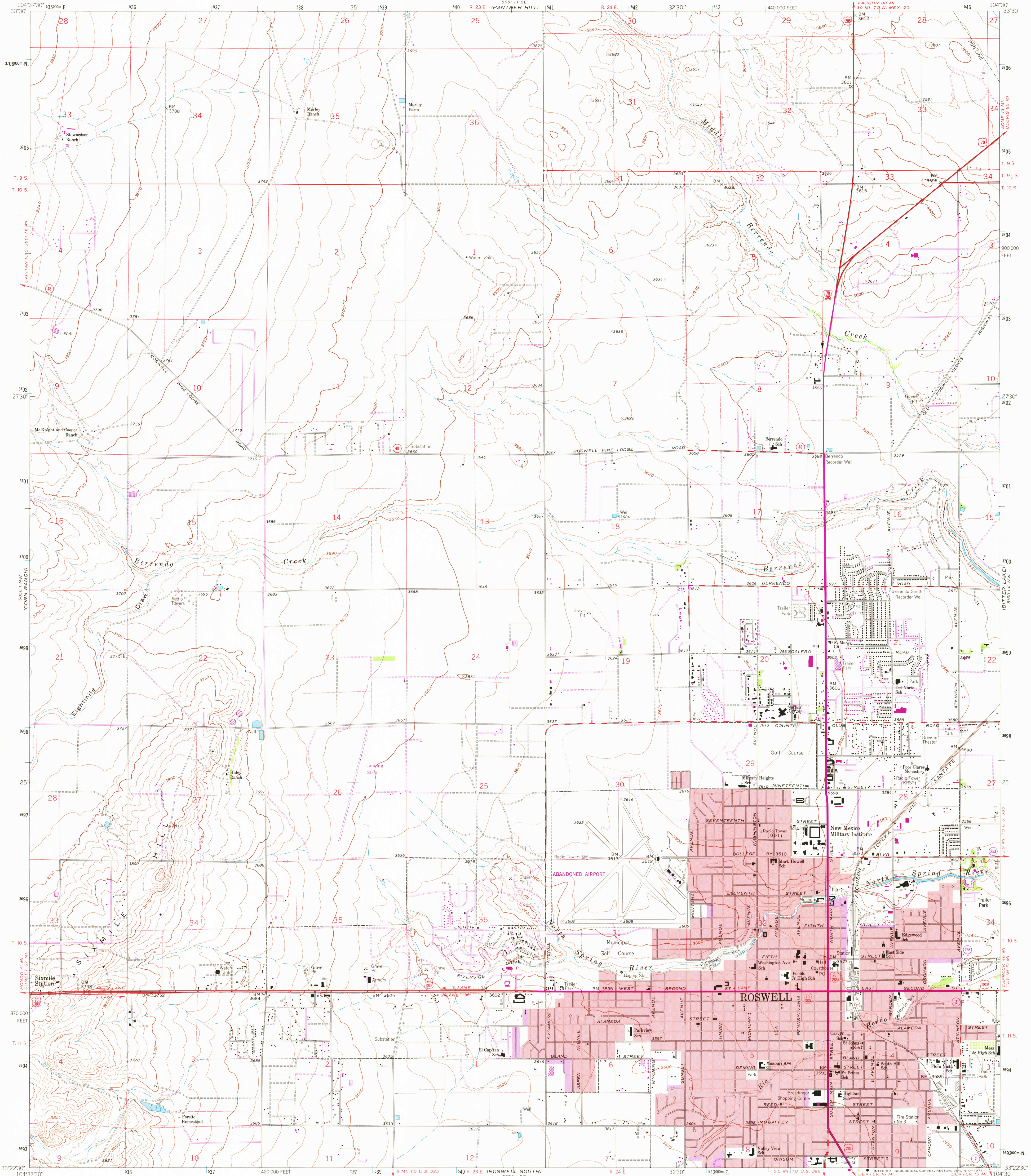


5050 11 SW
(GARY DRAWN)

UNITED STATES
DEPARTMENT OF THE INTERIOR
GEOLOGICAL SURVEY

ROSWELL NORTH QUADRANGLE
NEW MEXICO-CHAVES CO
7.5 MINUTE SERIES (TOPOGRAPHIC)

5050 11 SW
(MELBA)



Mapped, edited, and published by the Geological Survey
in cooperation with U.S. Corps of Engineers

Control by USGS and USC&GS

Planimetry by photogrammetric methods from aerial photographs
taken 1961. Topography by planetable surveys 1949. Revised 1962

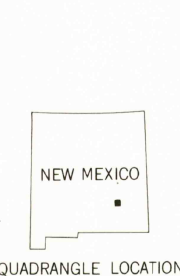
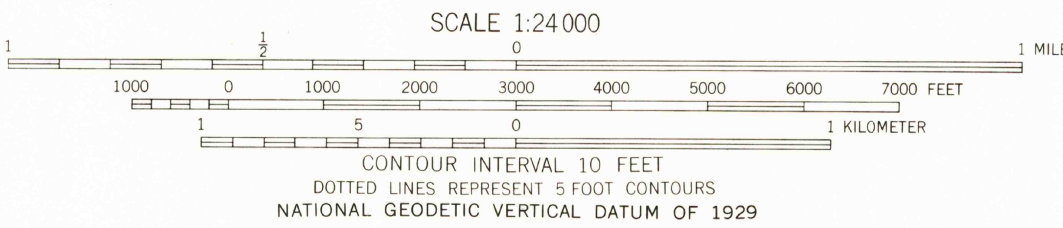
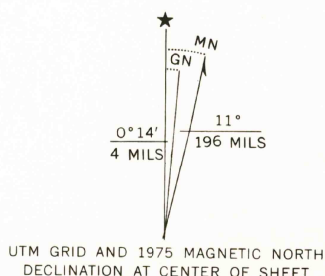
Polyconic projection. 1927 North American datum
10,000-foot grid based on New Mexico coordinate system, east zone
1000-meter Universal Transverse Mercator grid ticks,
zone 13, shown in blue

Fine red dashed lines indicate selected fence lines

Red tint indicates area in which only landmark buildings are shown

Revisions shown in purple compiled from aerial photographs
taken 1975. This information not field checked

Purple tint indicates extension of urban areas



ROAD CLASSIFICATION	
Heavy-duty	Light-duty
Medium-duty	Unimproved dirt
U.S. Route	State Route

JUL 1 1978

ROSSELL NORTH, N. MEX.

N3322 5 - W10430/7.5

USGS
Historical File
Topographic Division

1962
PHOTOREVISED 1975

AMS 5050 11 NE-SERIES V881

3900