

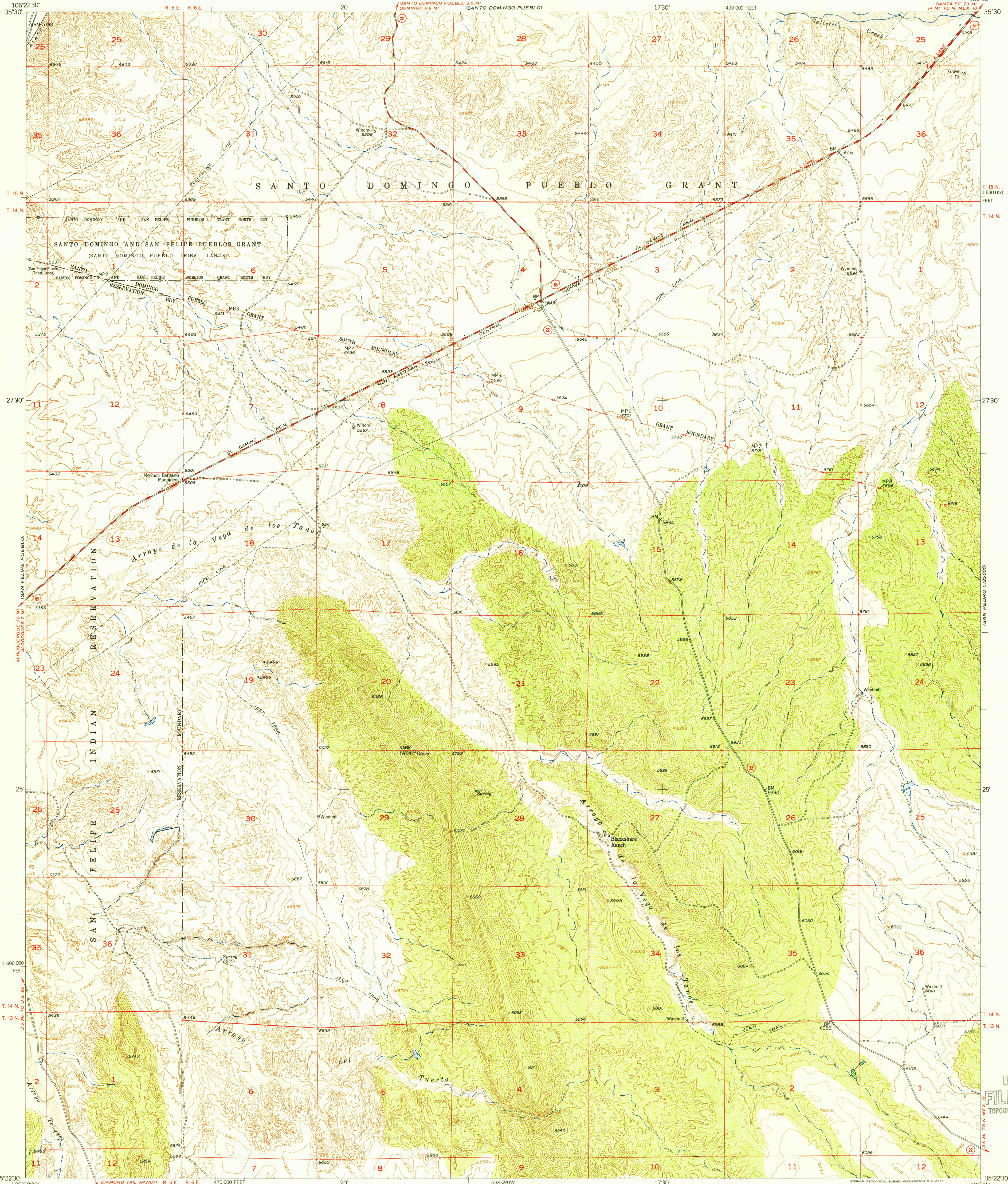
(SANTO DOMINGO PUEBLO SW)

UNITED STATES DEPARTMENT OF THE INTERIOR GEOLOGICAL SURVEY

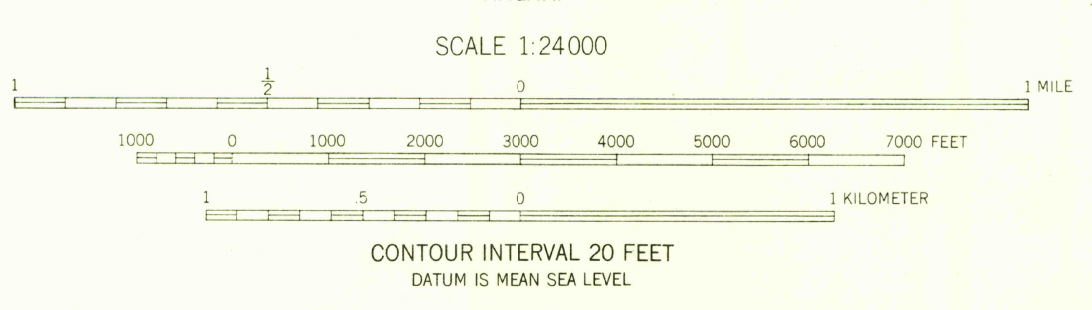
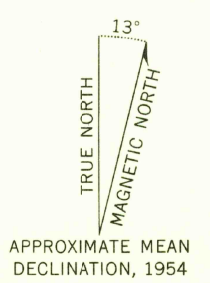
U.S.G.S. FILE COPY TOPOGRAPHIC DIVISION

SAN FELIPE PUEBLO NE QUADRANGLE NEW MEXICO-SANDOVAL CO. 7.5 MINUTE SERIES (TOPOGRAPHIC)

(TETILLA PEAK)



Mapped, edited, and published by the Geological Survey Control by USGS and USC&GS Topography from aerial photographs by photogrammetric methods Aerial photographs taken 1952. Field check 1954 Polyconic projection. 1927 North American datum 10,000-foot grid based on New Mexico coordinate system, central zone Dashed land lines indicate approximate locations Unchecked elevations are shown in brown



USGS Historical File Topographic Division



ROAD CLASSIFICATION table with symbols for Heavy-duty, Medium-duty, Light-duty, and Unimproved dirt roads, as well as U.S. and State Routes.

SAN FELIPE PUEBLO NE, N. MEX. N3522.5-W10615/7.5

1954

U.S.G.S. FILE COPY TOPOGRAPHIC DIVISION

U.S.G.S. FILE COPY TOPOGRAPHIC DIVISION