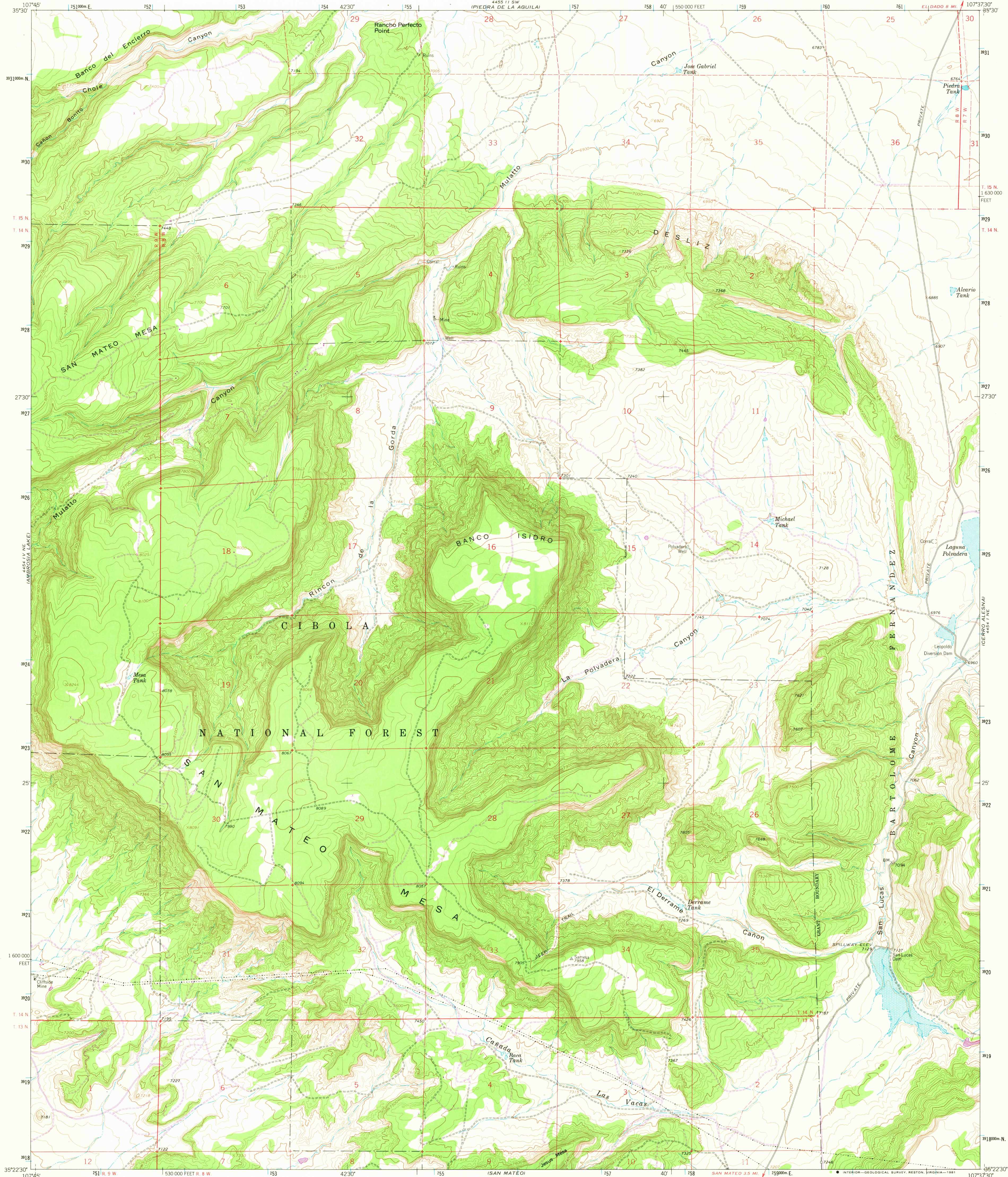


UNITED STATES
DEPARTMENT OF THE INTERIOR
GEOLOGICAL SURVEY

SAN LUCAS DAM QUADRANGLE
NEW MEXICO-MCKINLEY CO.
7.5 MINUTE SERIES (TOPOGRAPHIC)



Mapped, edited, and published by the Geological Survey

Control by USGS and NOS/NOAA

Topography by photogrammetric methods from aerial photographs taken 1956 and 1958. Field checked 1963

Polyconic projection. 1927 North American datum
10,000-foot grid based on New Mexico coordinate system, west zone
1000-meter Universal Transverse Mercator grid ticks,
zone 13, shown in blue

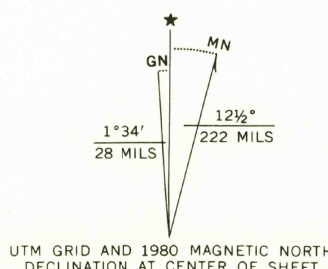
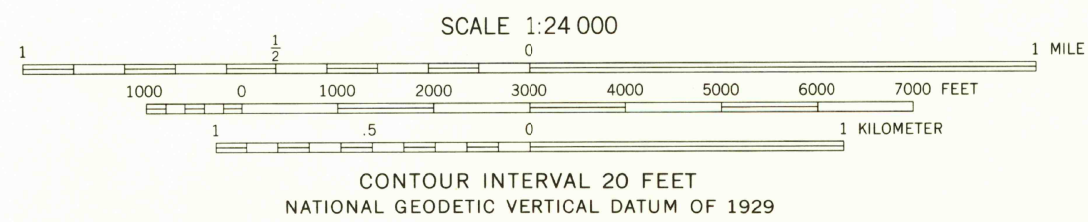
Fine red dashed lines indicate selected fence lines

Certain land lines are omitted because of insufficient data

Areas covered by dashed light blue pattern are subject to controlled inundation

There may be private inholdings within the boundaries of the National or State reservations shown on this map

To place on the predicted North American Datum 1983
move the projection lines 55 meters east as
shown by dashed corner ticks



THIS MAP COMPLIES WITH NATIONAL MAP ACCURACY STANDARDS
FOR SALE BY U. S. GEOLOGICAL SURVEY, DENVER, COLORADO 80225, OR RESTON, VIRGINIA 22092
A FOLDER DESCRIBING TOPOGRAPHIC MAPS AND SYMBOLS IS AVAILABLE ON REQUEST

Revisions shown in purple compiled from aerial photographs
taken 1978 and other source data. This information not
field checked. Map edited 1980



USGS
HISTORICAL FILE
NATIONAL MAPPING DIVISION

ROAD CLASSIFICATION
Light-duty ————— Unimproved dirt - - - - -

SAN LUCAS DAM, N. MEX.
N3522.5-W10737.5/7.5

1963
PHOTOREVISED 1980
DMA 4454 I NW-SERIES VB81

SEP 21 1981
90210