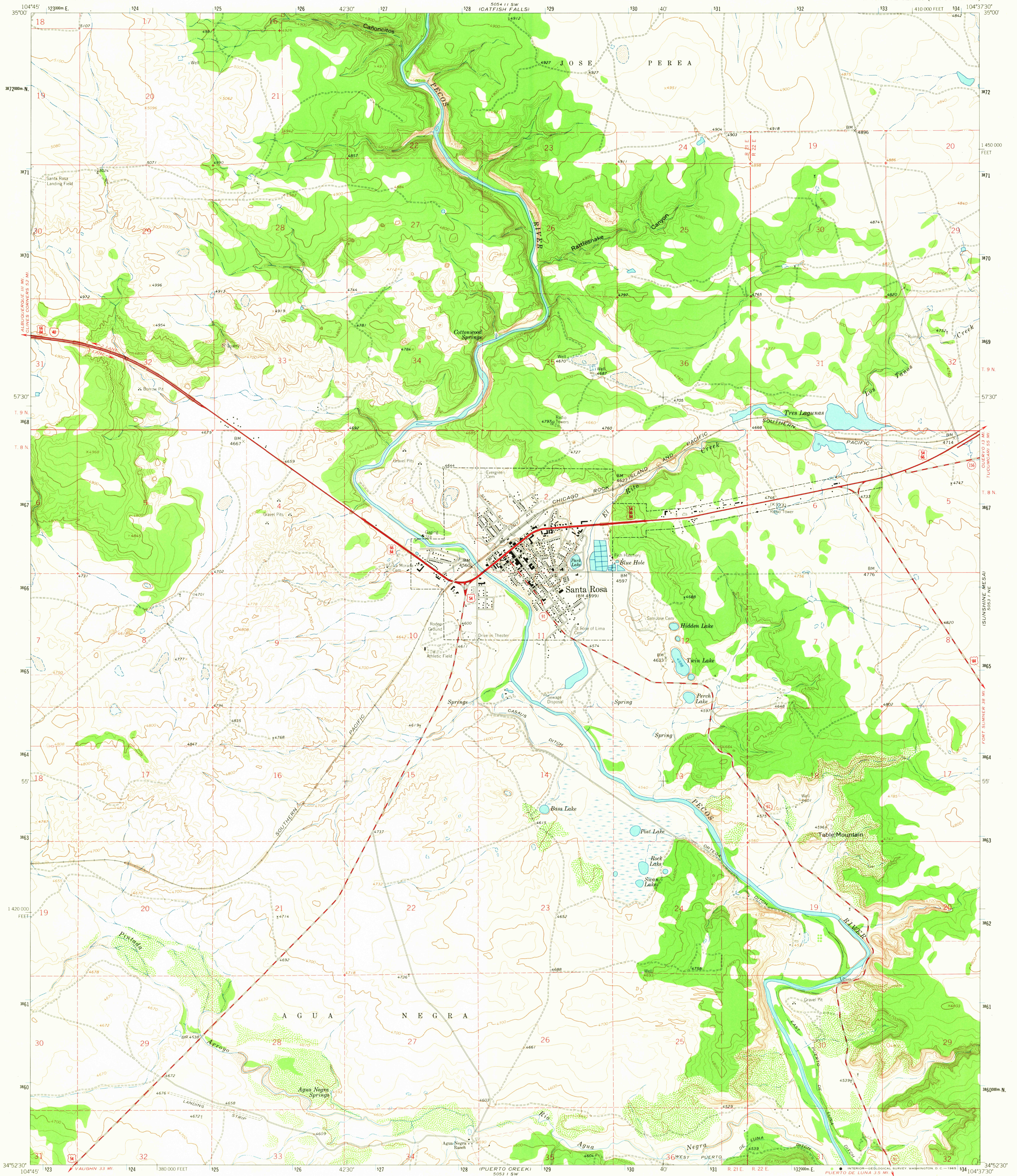


5054 11 SW
(COLONIAS)

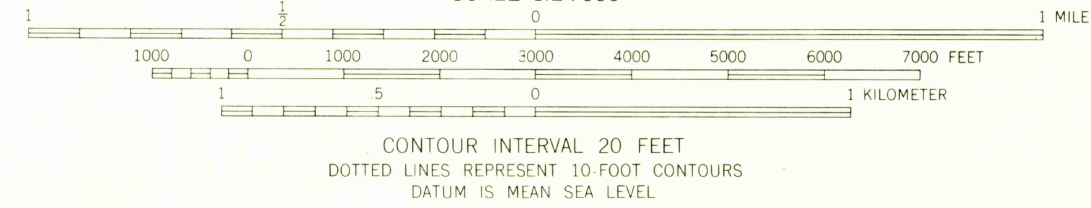
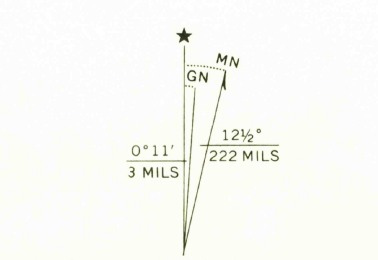
5054 11 SE
(SACATON DRAW)

UNITED STATES
DEPARTMENT OF THE INTERIOR
GEOLOGICAL SURVEY

SANTA ROSA QUADRANGLE
NEW MEXICO-GUADALUPE CO.
7.5 MINUTE SERIES (TOPOGRAPHIC)



Mapped, edited, and published by the Geological Survey
Control by USGS and USC&GS
Topography by photogrammetric methods from aerial photographs taken 1962. Field checked 1963
Polyconic projection - 1927 North American datum
10,000-foot grid based on New Mexico coordinate system, east zone
1000 meter Universal Transverse Mercator grid ticks, zone 13, shown in blue
Fine red dashed lines indicate selected fence lines



CONTOUR INTERVAL 20 FEET
DOTTED LINES REPRESENT 10 FOOT CONTOURS
DATUM IS MEAN SEA LEVEL

USGS
Historical File
Topographic Division

ROAD CLASSIFICATION	
Heavy-duty	Light-duty
Medium-duty	Unimproved dirt
○ Interstate Route	○ U.S. Route
	○ State Route



U.S.G.S.
FILE COPY
TOPOGRAPHIC DIVISION

SANTA ROSA, N. MEX.
N3452.5-W10437.5/7.5
1963
AMS 5053 1 NW - SERIES V881

THIS MAP COMPLIES WITH NATIONAL MAP ACCURACY STANDARDS
FOR SALE BY U.S. GEOLOGICAL SURVEY, DENVER, COLORADO 80225, OR WASHINGTON, D.C. 20242
A FOLDER DESCRIBING TOPOGRAPHIC MAPS AND SYMBOLS IS AVAILABLE ON REQUEST

OCT 4 1965
2705