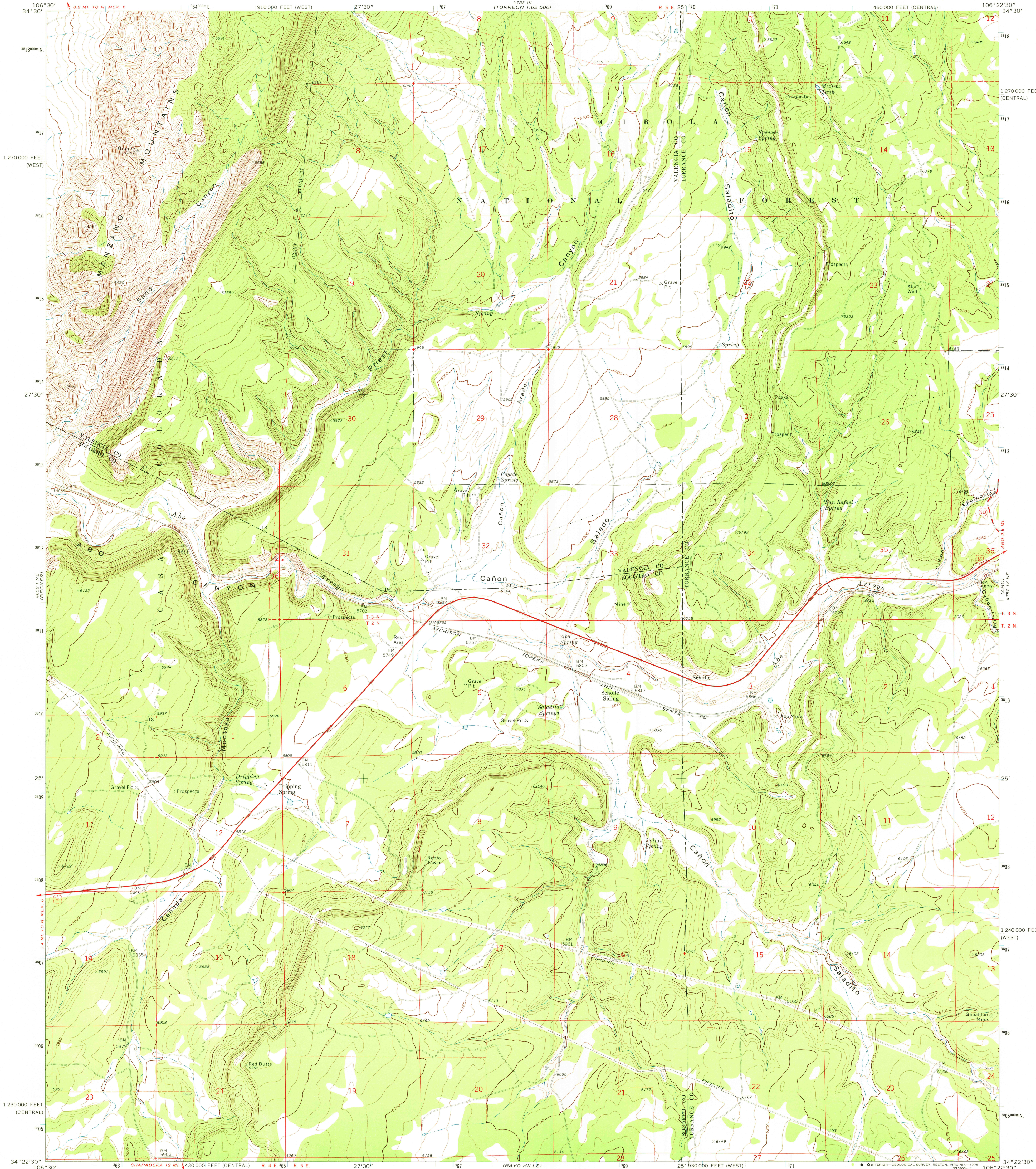


UNITED STATES  
DEPARTMENT OF THE INTERIOR  
GEOLOGICAL SURVEY

SCHOLLE QUADRANGLE  
NEW MEXICO  
7.5 MINUTE SERIES (TOPOGRAPHIC)



Mapped, edited, and published by the Geological Survey

Control by USGS, USC&GS, and Defense Mapping Agency

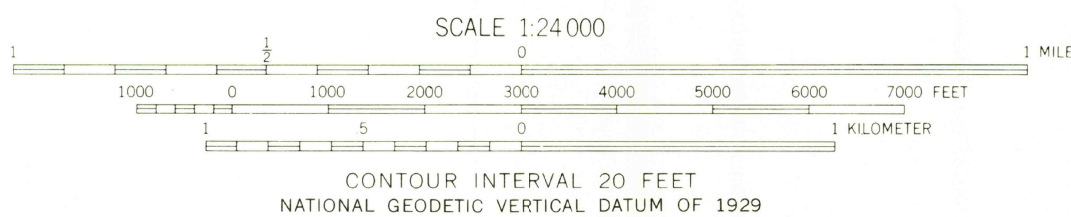
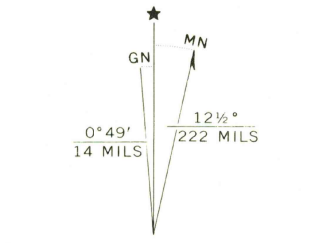
Topography by photogrammetric methods from aerial photographs taken 1971. Field checked 1972

Projection: New Mexico coordinate system, central zone (transverse Mercator)

10,000-foot grid ticks based on New Mexico coordinate system, central and west zones

1000-meter Universal Transverse Mercator grid ticks, zone 13, shown in blue. 1927 North American datum

Fine red dashed lines indicate selected fence lines



| ROAD CLASSIFICATION             |   |
|---------------------------------|---|
| Primary highway, hard surface   | Light duty road, hard or improved surface |
| Secondary highway, hard surface | Unimproved road                           |
| Interstate Route                | U. S. Route                               |
|                                 | State Route                               |

USGS  
HISTORICAL FILE  
TOPOGRAPHIC DIVISION

SCHOLLE, N. MEX.  
N3422.5—W10622.5/7.5  
1972

AMS 4752 IV NW—SERIES V881