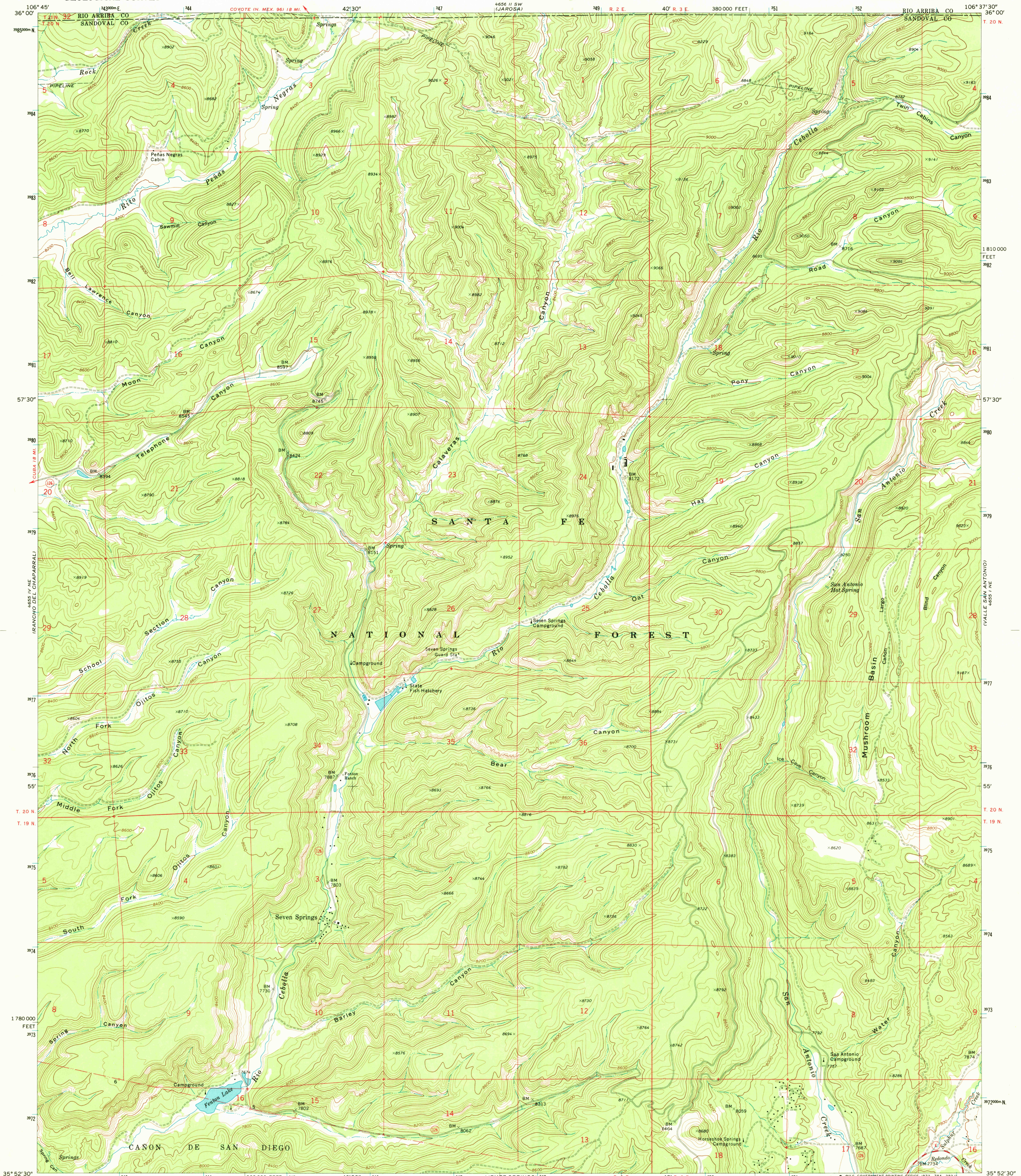
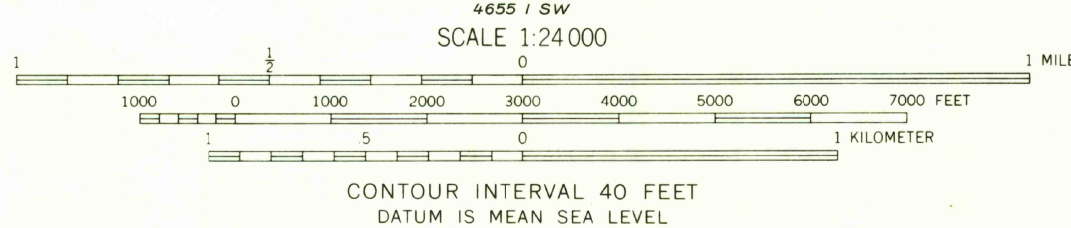
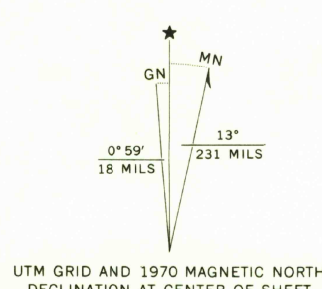


UNITED STATES
DEPARTMENT OF THE INTERIOR
GEOLOGICAL SURVEY

SEVEN SPRINGS QUADRANGLE
NEW MEXICO—SANDOVAL CO.
7.5 MINUTE SERIES (TOPOGRAPHIC)
NW/4 JEMEZ SPRINGS 15' QUADRANGLE



Mapped by the U.S. Forest Service
Edited, and published by the Geological Survey
Control by USGS, USC&GS, and U.S. Forest Service
Topography by photogrammetric methods from aerial
photographs taken 1964-65. Field checked by USGS 1970
Polyconic projection. 1927 North American datum
10,000-foot grid based on New Mexico coordinate system,
central zone
1000-meter Universal Transverse Mercator grid ticks,
zone 13, shown in blue



ROAD CLASSIFICATION

Primary highway, hard surface	Light-duty road, hard or improved surface
Secondary highway, hard surface	Unimproved road
Interstate Route	U.S. Route
	State Route

SEVEN SPRINGS, N. MEX.
NW/4 JEMEZ SPRINGS 15' QUADRANGLE
N3552.5-W10637.5/7.5

1970
AMS 4655 1 NW—SERIES V881

THIS MAP COMPLIES WITH NATIONAL MAP ACCURACY STANDARDS
FOR SALE BY U.S. GEOLOGICAL SURVEY, DENVER, COLORADO 80225, OR WASHINGTON, D.C. 20242
A FOLDER DESCRIBING TOPOGRAPHIC MAPS AND SYMBOLS IS AVAILABLE ON REQUEST

USGS
Historical File
Topographic Division

Ding
3500