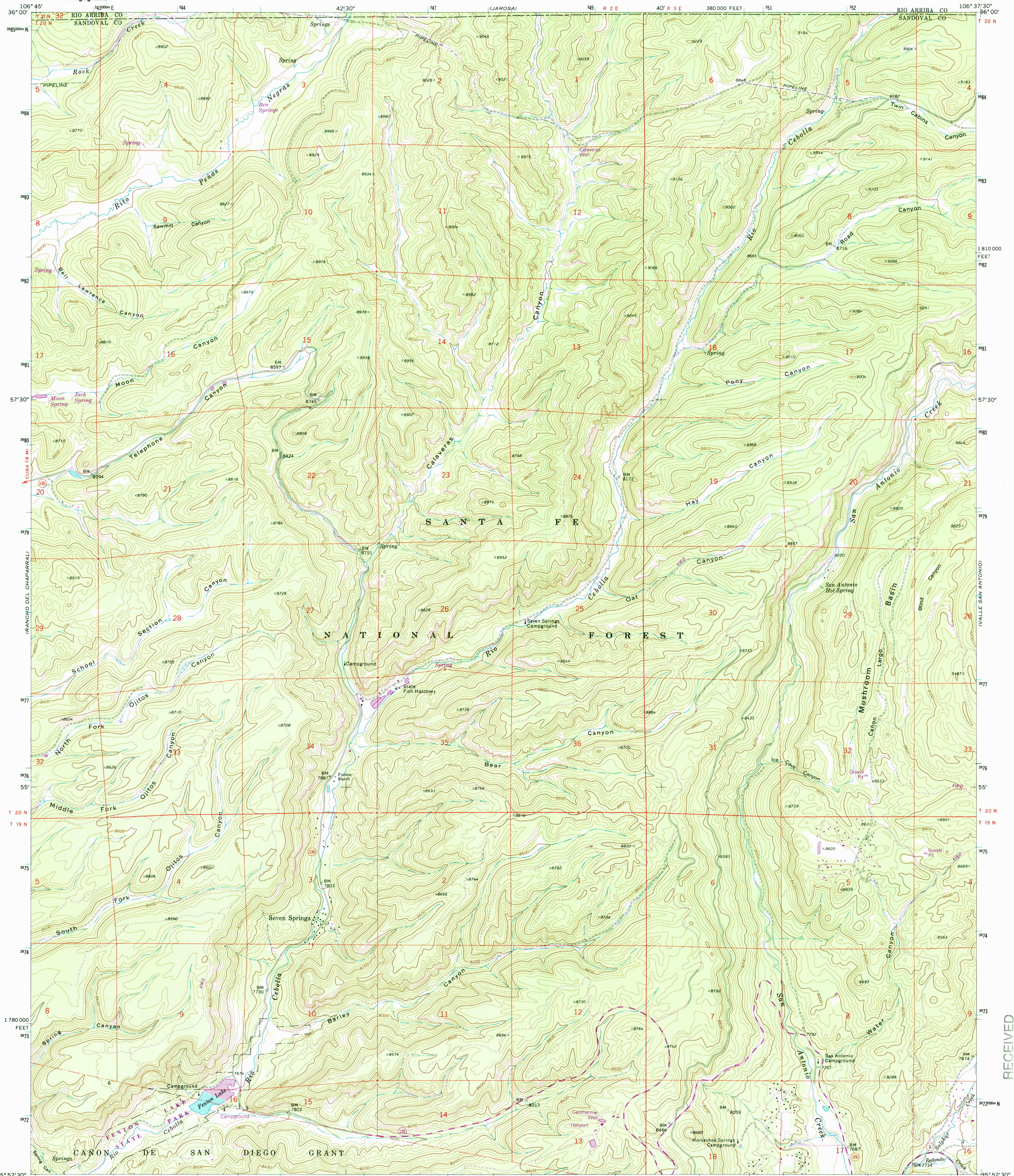


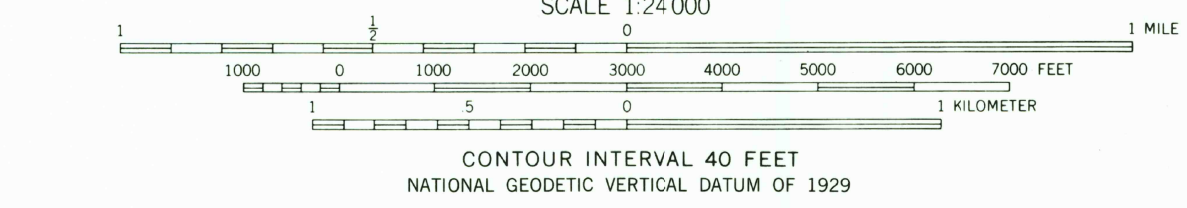
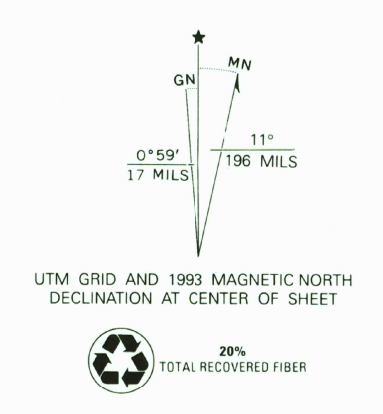


U.S. DEPARTMENT OF THE INTERIOR
U.S. GEOLOGICAL SURVEY

SEVEN SPRINGS QUADRANGLE
NEW MEXICO
7.5 MINUTE SERIES (TOPOGRAPHIC)



Map by the U. S. Forest Service
Edited and published by the Geological Survey
Control by USGS and NOS/NOAA
Compiled from aerial photographs taken 1964 and 1965. Information shown in purple and woodland compiled from aerial photographs taken 1990 and other sources and has been field checked. Map edited 1993. Conflicts may exist between some updated features and previously mapped contours.
1927 North American Datum (NAD 27). Projection and 10000-foot ticks: New Mexico Coordinate System, central zone (Transverse Mercator)
Blue 1000-meter Universal Transverse Mercator ticks, zone 13
North American Datum of 1983 (NAD 83) is shown by dashed corner ticks. The values of the shift between NAD 27 and NAD 83 for 7.5-minute intersections are given in USGS Bulletin 1875
There may be private inholdings within the boundaries of the National or State reservations shown on this map



CONTOUR INTERVAL 40 FEET
NATIONAL GEODETIC VERTICAL DATUM OF 1929



- ROAD CLASSIFICATION
- Primary highway, hard surface
 - Secondary highway, hard surface
 - Light-duty road, hard or improved surface
 - Unimproved road
 - Interstate Route
 - U. S. Route
 - State Route

SEVEN SPRINGS, N. MEX.
35106-H6-TF-024

1970
REVISED 1993
DMA 4655 1 NW-SERIES V881

THIS MAP COMPLIES WITH NATIONAL MAP ACCURACY STANDARDS
FOR SALE BY U.S. GEOLOGICAL SURVEY, P.O. BOX 25286, DENVER, COLORADO 80225
A FOLDER DESCRIBING TOPOGRAPHIC MAPS AND SYMBOLS IS AVAILABLE ON REQUEST

RECEIVED
AUG 31 2000

