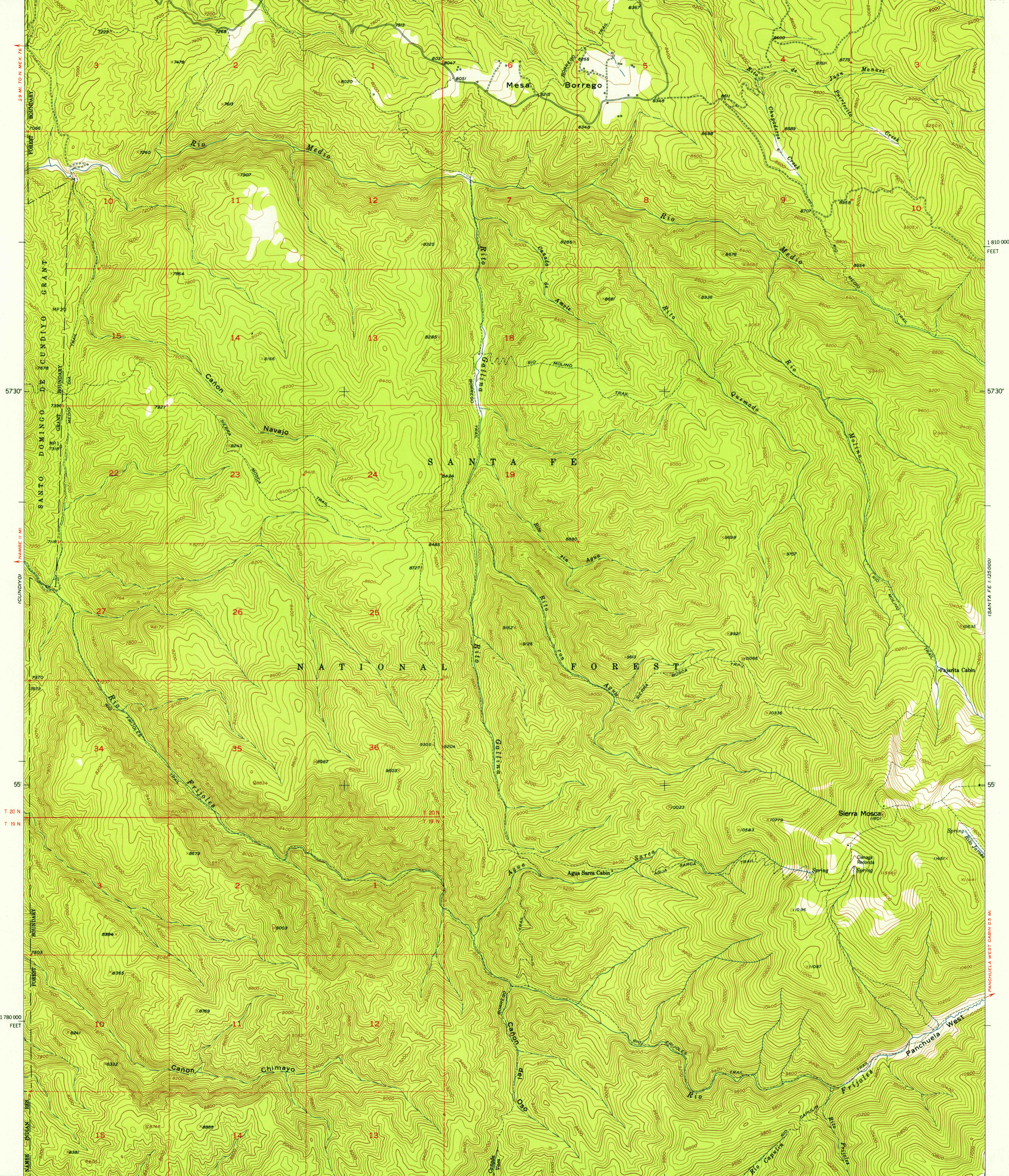
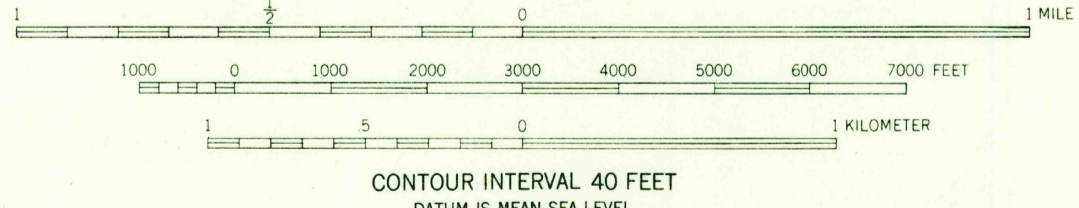
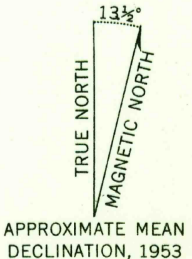


105°52'30" 36°00' TRUCHAS 5.3 MI. CORDOVA 0.9 MI. R. 10 E. R. 11 E. (TRUCHAS) BORREGO RANGER CABIN 0.6 MI. 4730' 640 000 FEET 105°45' 36°00'



35°52'30" 105°52'30" 1620 000 FEET 50' R. 10 E. R. 11 E. (ASPEN BASIN) RANCHO VIEJO 1.7 MI. 4730' 105°45' 35°52'30'

Mapped, edited, and published by the Geological Survey
Control by USGS and USC&GS
Topography from aerial photographs by multiplex methods
Aerial photographs taken 1948. Field check 1953
Polyconic projection. 1927 North American datum
10,000-foot grid based on New Mexico coordinate system,
central zone
Dashed land lines indicate approximate locations
Land lines unsurveyed in T.19 N.-R.11 E. and in part of
T.20 N.-R.11 E.
Unchecked elevations are shown in brown



USGS Historical File Topographic Division



ROAD CLASSIFICATION

Heavy-duty	Light-duty
Medium-duty	Unimproved dirt
U. S. Route	State Route

THIS MAP COMPLIES WITH NATIONAL MAP ACCURACY STANDARDS
FOR SALE BY U. S. GEOLOGICAL SURVEY, FEDERAL CENTER, DENVER, COLORADO OR WASHINGTON 25, D. C.
A FOLDER DESCRIBING TOPOGRAPHIC MAPS AND SYMBOLS IS AVAILABLE ON REQUEST

U.S.G.S. SIERRA MOSCA, N. MEX.
N3552.5-W10545/7.5
1953