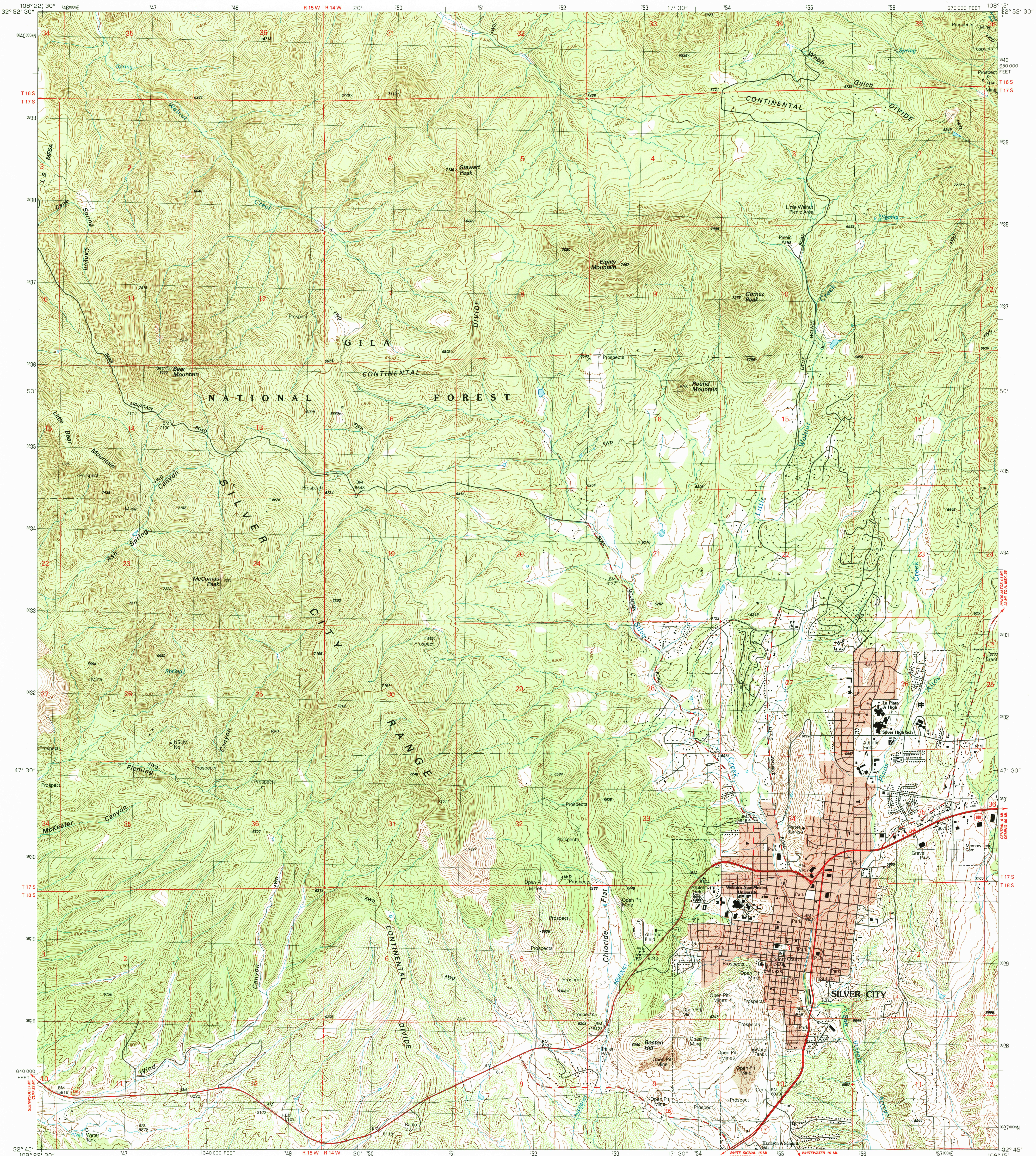
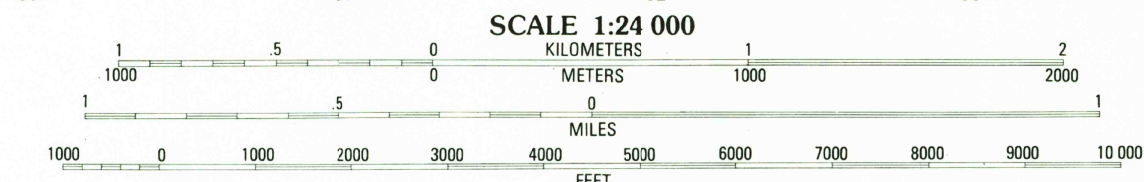
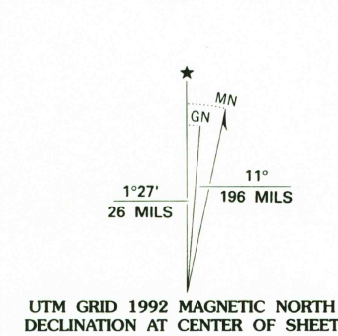


DEPARTMENT OF THE INTERIOR
UNITED STATES GEOLOGICAL SURVEY

SILVER CITY QUADRANGLE
NEW MEXICO-GRANT CO.
7.5 MINUTE SERIES (TOPOGRAPHIC)



Produced by the United States Geological Survey
Control by USGS and NOS/NOAA
Compiled from aerial photographs taken 1987
Field checked 1989. Map edited 1992
North American Datum of 1927 (NAD 27). Projection and
10 000-foot grid ticks: New Mexico Coordinate System, west
zone (Transverse Mercator). 1000-meter Universal Transverse
Mercator grid, zone 12
The difference between NAD 27 and North American Datum of
1983 (NAD 83) for 7.5 minute intersections is given in USGS
Bulletin 1875. The NAD 83 is shown by dashed corner ticks
There may be private inholdings within the boundaries of the
National or State reservations shown on this map
Fine red dashed lines indicate selected fence and field lines where
generally visible on aerial photographs. This information is
unchecked



CONTOUR INTERVAL 20 FEET
NATIONAL GEODETIC VERTICAL DATUM OF 1929
TO CONVERT FEET TO METERS MULTIPLY BY 0.3048
TO CONVERT METERS TO FEET MULTIPLY BY 3.2808

THIS MAP COMPLIES WITH NATIONAL MAP ACCURACY STANDARDS
FOR SALE BY U.S. GEOLOGICAL SURVEY
DENVER, COLORADO 80225 OR RESTON, VIRGINIA 22092
A FOLDER DESCRIBING TOPOGRAPHIC MAPS AND SYMBOLS IS AVAILABLE ON REQUEST

ROAD CLASSIFICATION

- Primary highway, hard surface
- Secondary highway, hard surface
- Unimproved road
- Light-duty road, hard or improved surface
- U. S. Route
- State Route

QUADRANGLE LOCATION

1	2	3
4	5	6
7	8	

ADJOINING 7.5' QUADRANGLE NAMES

1 Doney Ranch
2 Reading Mountain
3 Tule Station
4 Circle Mesa
5 Fort Bayard
6 Wind Mountain
7 Tyrone
8 Hurley West

NEW MEXICO

USGS HISTORICAL MAP ARCHIVES
SEP 14 1992
REC'D FILE COPY

SILVER CITY, N. MEX.
32108-G3-TF-024
1992
DMA 4349 IV SE-SERIES V881