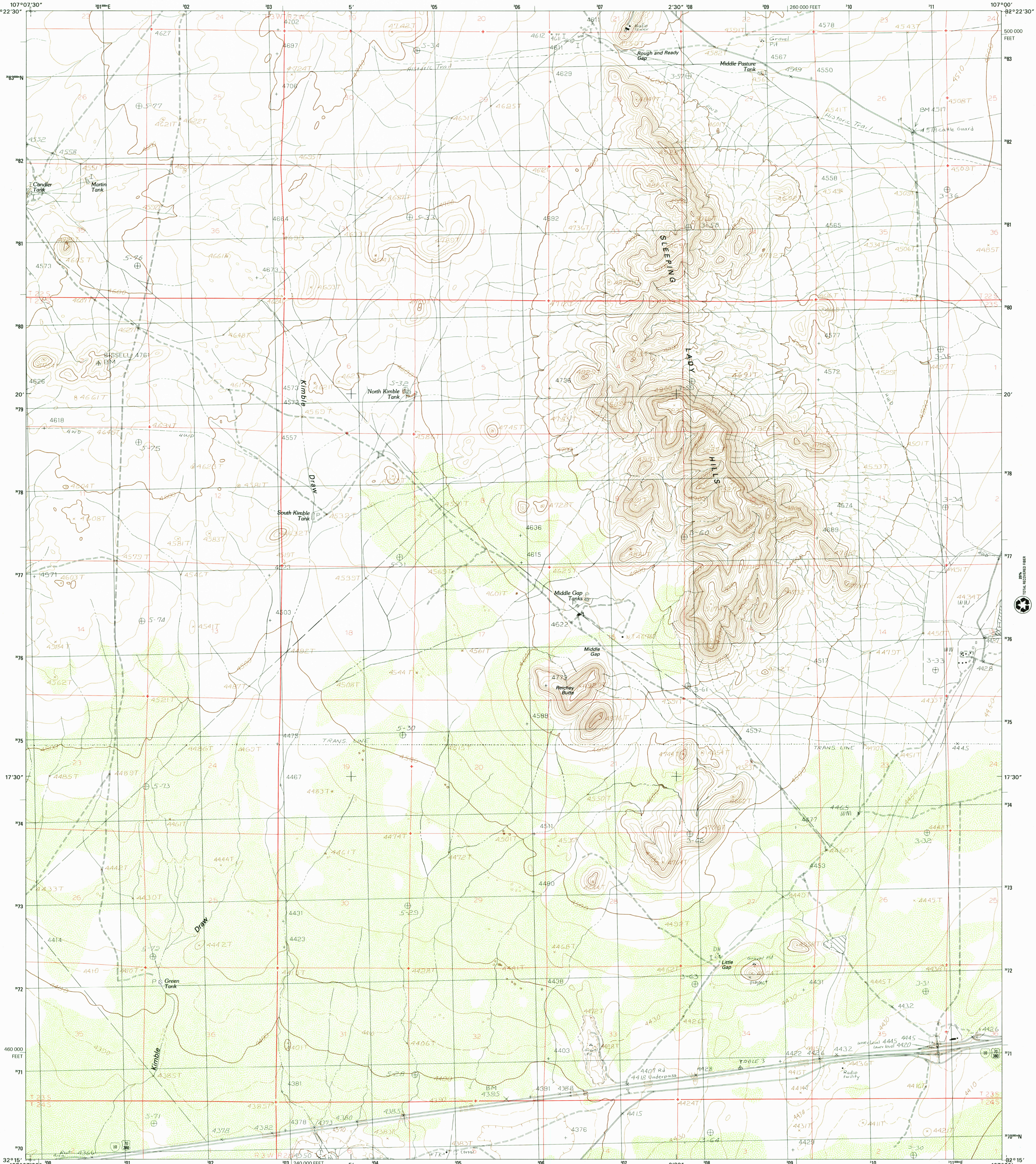




U.S. DEPARTMENT OF THE INTERIOR
U.S. GEOLOGICAL SURVEY

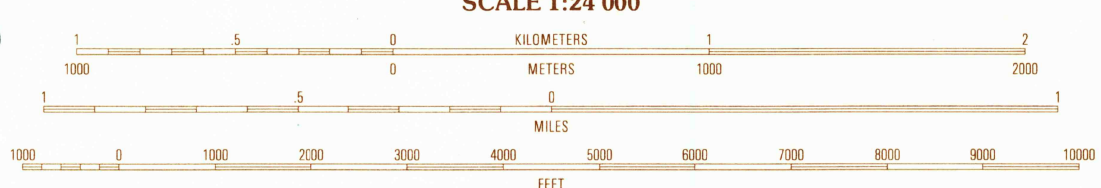
SLEEPING LADY HILLS QUADRANGLE
NEW MEXICO-DONA ANA CO.
7.5-MINUTE SERIES (TOPOGRAPHIC)



PRODUCED BY THE UNITED STATES GEOLOGICAL SURVEY
DERIVED FROM AERIAL PHOTOGRAPHS TAKEN 1975
FIELD CHECKED 1976
PHOTOINSPECTED USING IMAGERY DATED 1996
No major culture or drainage changes observed.
PROJECTION TRANSVERSE MERCATOR
GRID: 1000-METER UNIVERSAL TRANSVERSE MERCATOR ZONE 13
10 000-FOOT STATE GRID TICKS NEW MEXICO, CENTRAL ZONE
UTM GRID DECLINATION 1°06' WEST
2001 MAGNETIC NORTH DECLINATION 10°06' EAST
VERTICAL DATUM NATIONAL GEODETIC VERTICAL DATUM OF 1988
HORIZONTAL DATUM 1927 NORTH AMERICAN DATUM
North American Datum of 1983 (NAD 83) is shown by dashed
corner ticks. The values of the shift between NAD 27 and
NAD 83 for 7.5-minute intersections are obtainable from
National Geographic Survey NADCON software
Public Land Survey System and survey control current
as of 1976. Boundaries verified 2001

PROVISIONAL MAP
Produced from original
manuscript drawings. In-
formation shown as of date
of photography.

RECEIVED
DEC 31 2001
USGS NWML
TOPOGRAPHIC MAP ARCHIVES



CONTOUR INTERVAL 20 FEET
SUPPLEMENTARY CONTOUR INTERVAL 10 FEET
NATIONAL GEODETIC VERTICAL DATUM OF 1929
(TO CONVERT ELEVATIONS TO THE NORTH AMERICAN VERTICAL DATUM OF 1988, ADD 2 FEET)
TO CONVERT FROM FEET TO METERS, MULTIPLY BY 0.3048

THIS MAP COMPLIES WITH NATIONAL MAP ACCURACY STANDARDS
FOR SALE BY U.S. GEOLOGICAL SURVEY, P.O. BOX 25286, DENVER, COLORADO 80225
A FOLDER DESCRIBING TOPOGRAPHIC MAPS AND SYMBOLS IS AVAILABLE ON REQUEST



QUADRANGLE LOCATION

1	2	3
4	5	6
7	8	

- 1 Magdalena Peak
- 2 Rough And Ready Hills
- 3 Leesburg
- 4 Magdalena Gap
- 5 Picacho Mountain
- 6 Mount Aden
- 7 Aden Hills
- 8 Aden NW

ADJOINING 7.5' QUADRANGLE NAMES

ROAD LEGEND

- Improved Road
- Unimproved Road
- Trail
- Interstate Route
- U.S. Route
- State Route

SLEEPING LADY HILLS, NM
PROVISIONAL EDITION 1996

