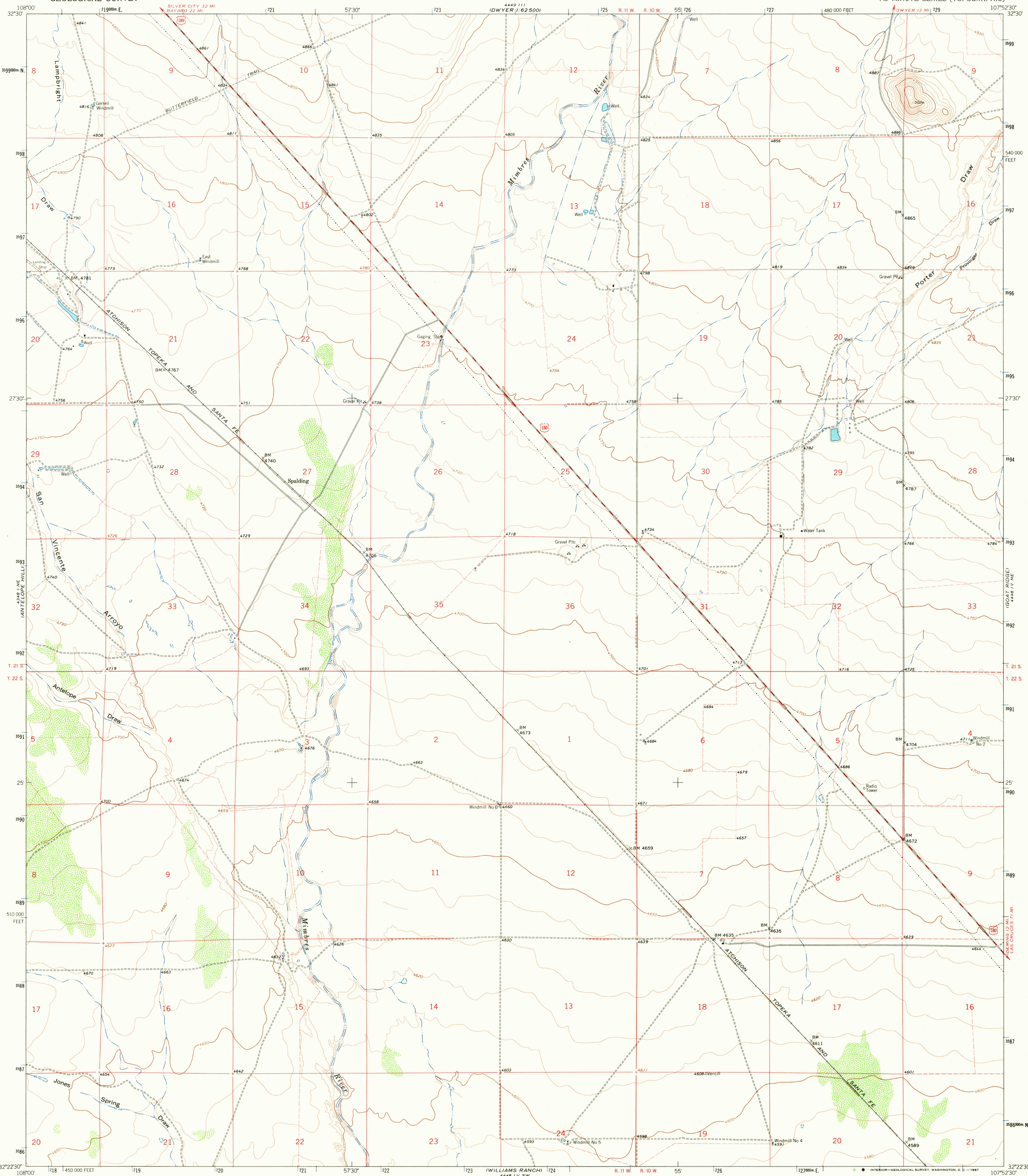
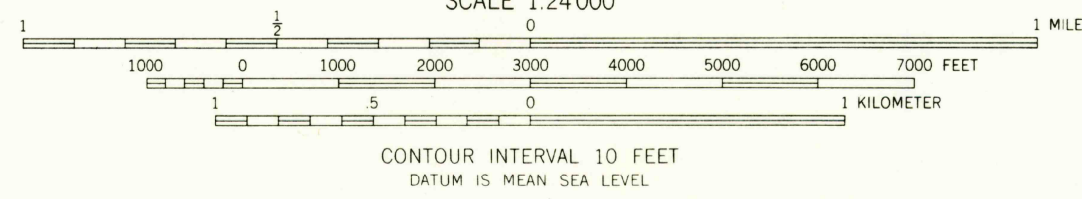
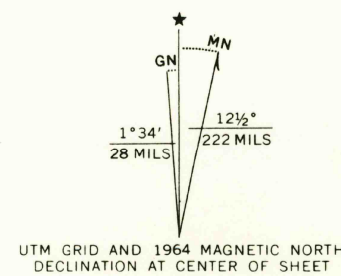


UNITED STATES  
DEPARTMENT OF THE INTERIOR  
GEOLOGICAL SURVEY

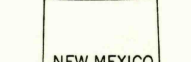
SPALDING QUADRANGLE  
NEW MEXICO-LUNA CO.  
7.5 MINUTE SERIES (TOPOGRAPHIC)



Mapped, edited, and published by the Geological Survey  
Control by USGS and USC&GS  
Topography by photogrammetric methods from aerial  
photographs taken 1962. Field checked 1964  
Polyconic projection. 1927 North American datum  
10,000-foot grid based on New Mexico coordinate system, west zone  
1000-meter Universal Transverse Mercator grid ticks,  
zone 13, shown in blue  
Fine red dashed lines indicate selected fence lines



USGS  
Historical File  
Topographic Division



ROAD CLASSIFICATION  
Medium-duty — Light-duty —  
Unimproved dirt —  
U.S. Route

U.S.G.S.  
TOPOGRAPHIC DIVISION

SPALDING, N. MEX.  
N3222.5-W10752.5/7.5

1964

AMS 4448 IV NW-SERIES V881

THIS MAP COMPLIES WITH NATIONAL MAP ACCURACY STANDARDS  
FOR SALE BY U.S. GEOLOGICAL SURVEY, DENVER, COLORADO 80225, OR WASHINGTON, D.C. 20242  
A FOLDER DESCRIBING TOPOGRAPHIC MAPS AND SYMBOLS IS AVAILABLE ON REQUEST