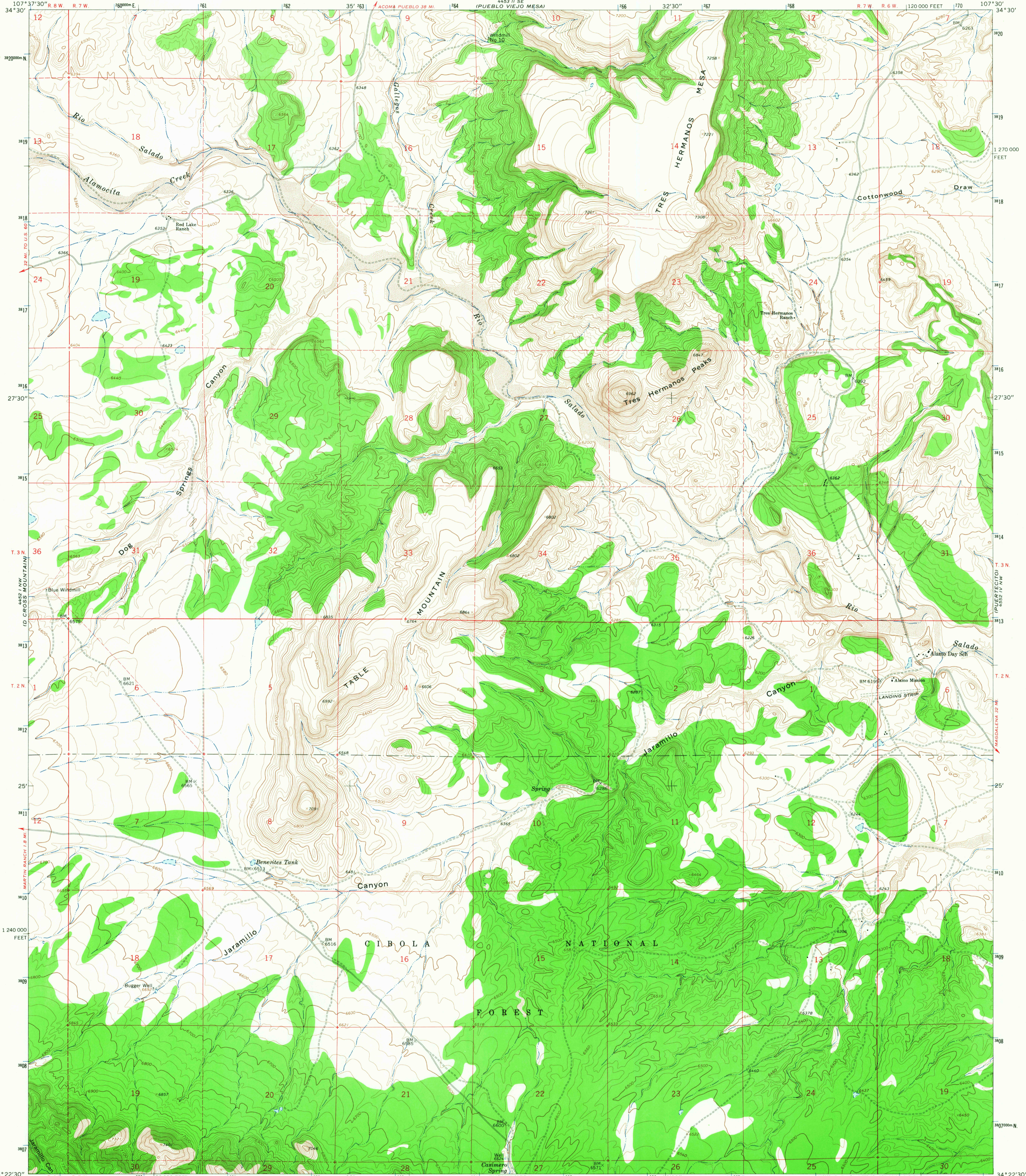
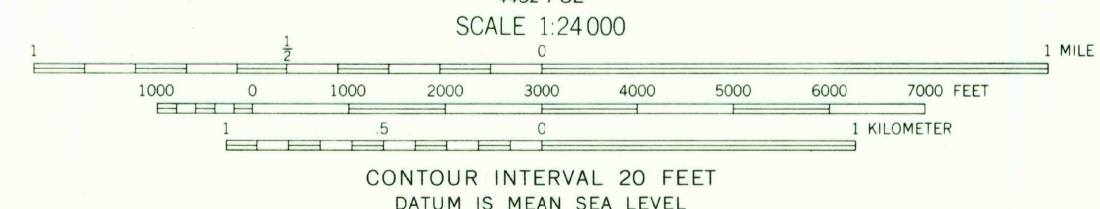
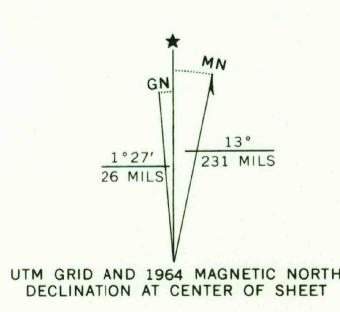


UNITED STATES
DEPARTMENT OF THE INTERIOR
GEOLOGICAL SURVEY

TABLE MOUNTAIN QUADRANGLE
NEW MEXICO—SOCORRO CO.
7.5 MINUTE SERIES (TOPOGRAPHIC)



Mapped, edited, and published by the Geological Survey
Control by USGS and USC&GS
Topography by photogrammetric methods from aerial
photographs taken 1963. Field checked 1964.
Polyconic projection. 1927 North American datum
10,000-foot grid based on New Mexico coordinate system, central zone
1000-meter Universal Transverse Mercator grid ticks,
zone 13, shown in blue
Fine red dashed lines indicate selected fence lines
Certain land lines are omitted because of insufficient data



USGS
Historical File
Topographic Division
U.S. GEOLOGICAL SURVEY
NEW MEXICO
TOPOGRAPHIC DIVISION
QUADRANGLE LOCATION

ROAD CLASSIFICATION
Light-duty ——— Unimproved dirt - - - - -

THIS MAP COMPLIES WITH NATIONAL MAP ACCURACY STANDARDS
FOR SALE BY U.S. GEOLOGICAL SURVEY, DENVER, COLORADO 80225, OR WASHINGTON, D. C. 20242
A FOLDER DESCRIBING TOPOGRAPHIC MAPS AND SYMBOLS IS AVAILABLE ON REQUEST

TABLE MOUNTAIN, N. MEX.
N3422.5—W10730.7.5

1964
AMS 4452 1 NE—SERIES V881
APR 3 1968