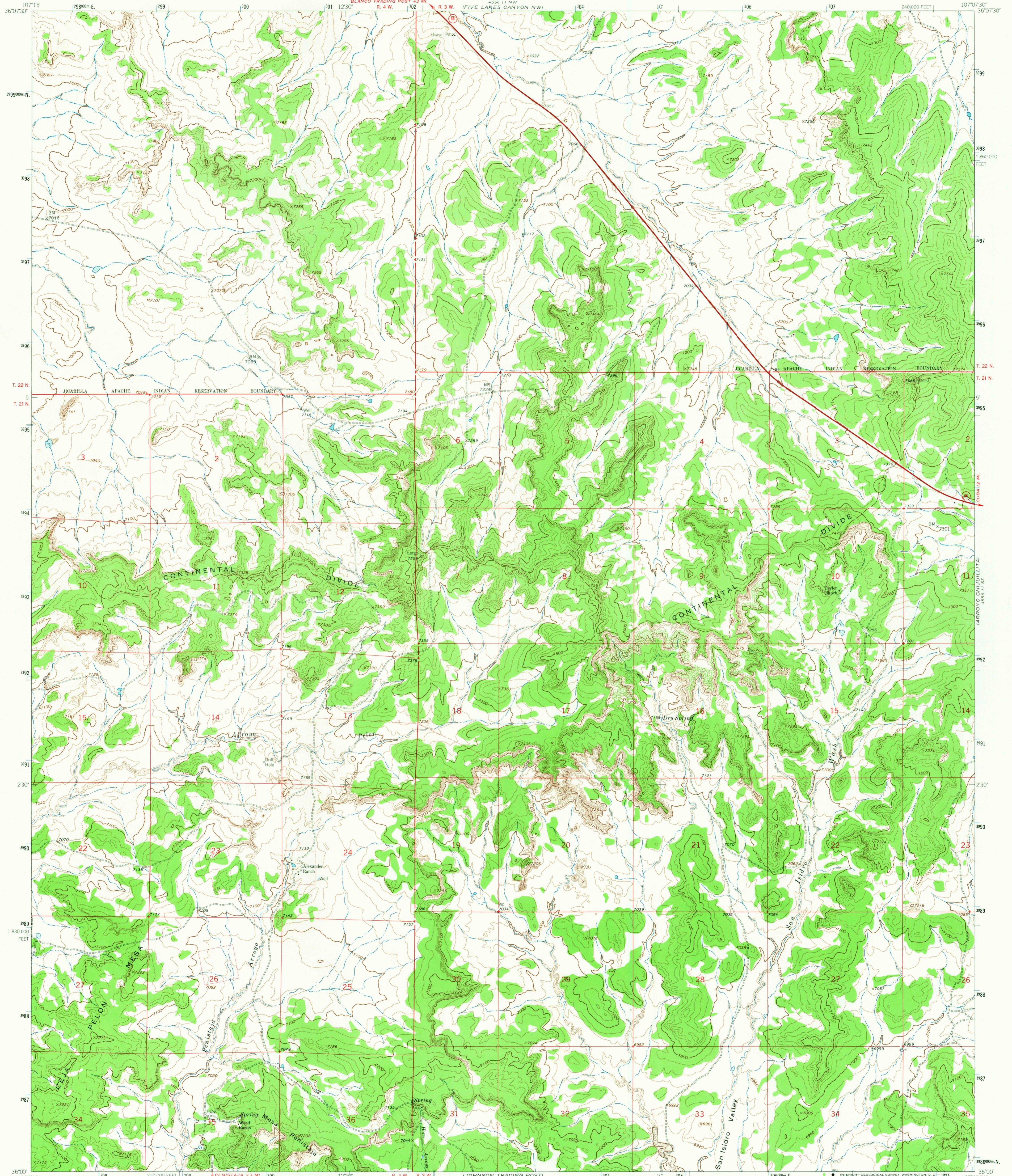
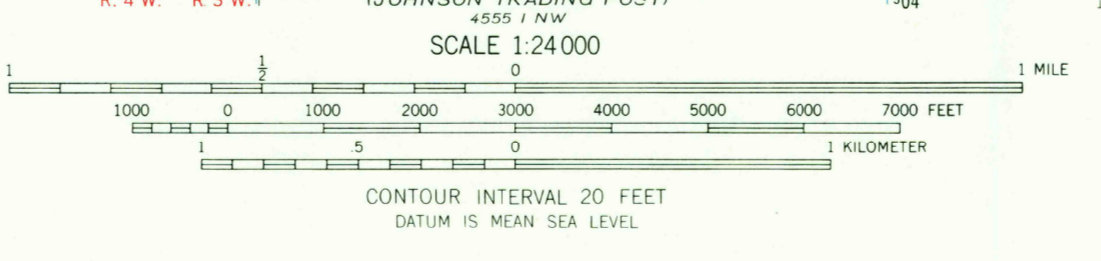
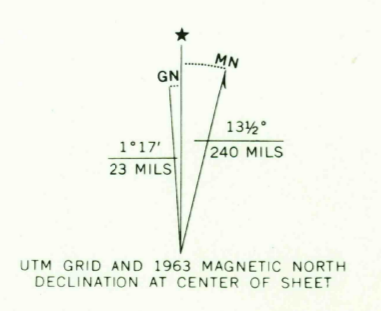


4556 II SW
FIVE LAKES
CANYON NE



Mapped, edited, and published by the Geological Survey
Control by USGS and USC&GS
Topography by photogrammetric methods from aerial
photographs taken 1963. Field checked 1963
Polyconic projection 1927 North American datum
10,000-foot grid based on New Mexico coordinate system, central zone
1000 meter Universal Transverse Mercator grid ticks,
zone 13, shown in blue
Fine red dashed lines indicate selected fence lines
Where omitted, land lines have not been established



USGS Heavy-duty
Historical File
Topographic Division

U.S.G.S.
FILE COPY
TOPOGRAPHIC DIVISION

TAYLOR RANCH, N. MEX.
N3600-W10707.5/7.5
1963
AMS 4556 II SW-SERIES V881

THIS MAP COMPLIES WITH NATIONAL MAP ACCURACY STANDARDS
FOR SALE BY U. S. GEOLOGICAL SURVEY, DENVER, COLORADO 80225, OR WASHINGTON, D. C. 20242
A FOLDER DESCRIBING TOPOGRAPHIC MAPS AND SYMBOLS IS AVAILABLE ON REQUEST

2260
SEP 21 1966