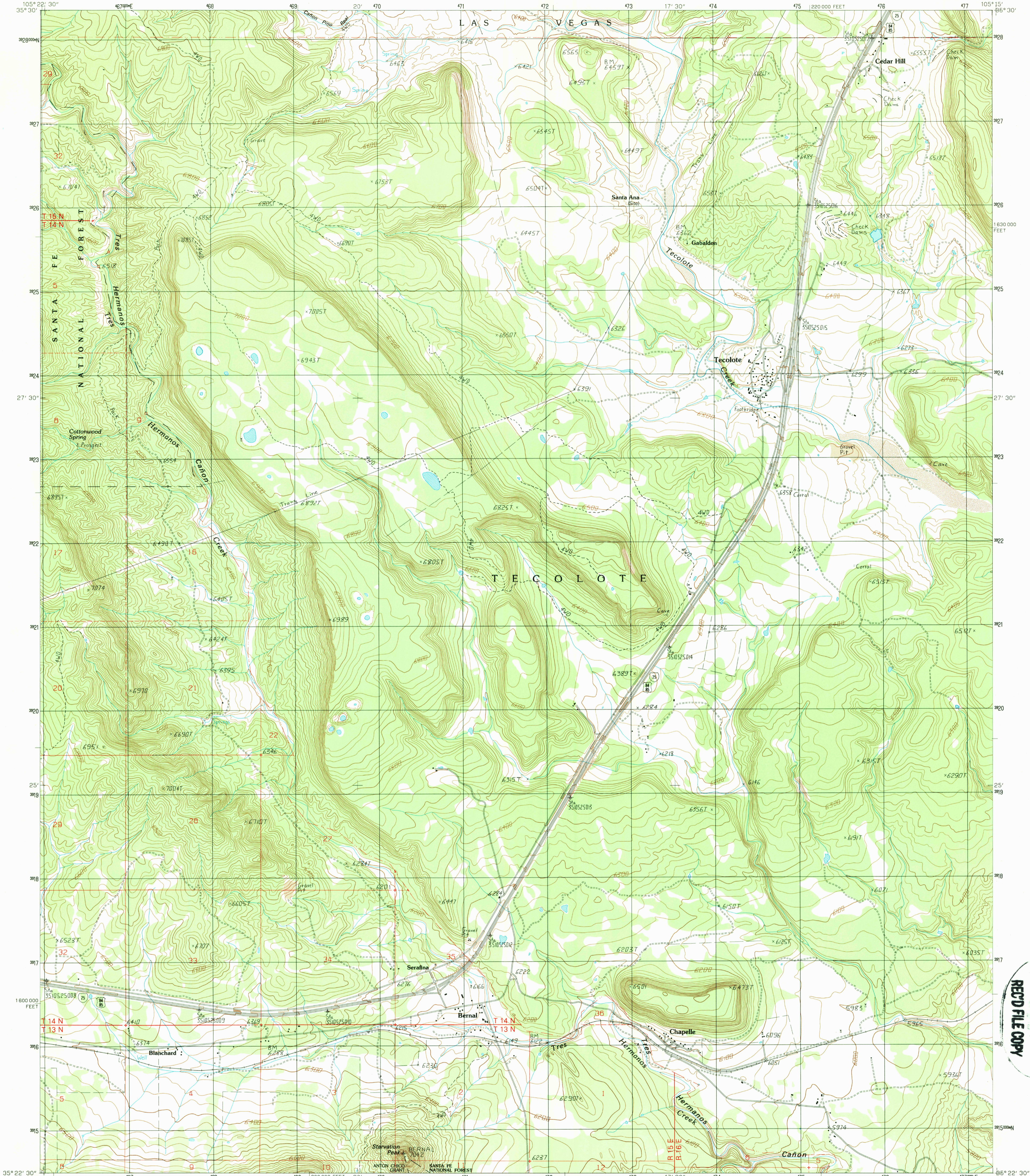


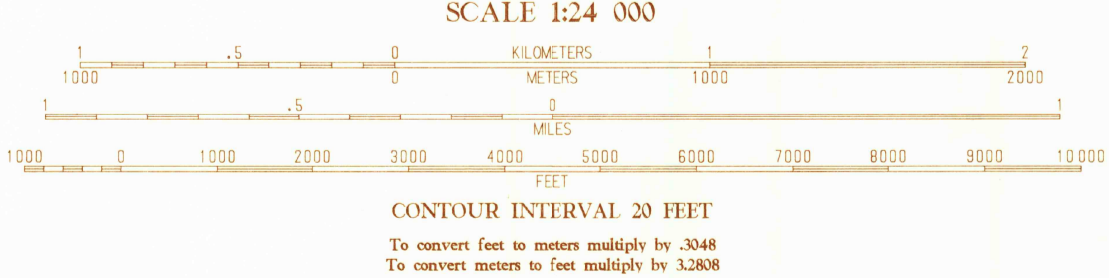
UNITED STATES
DEPARTMENT OF THE INTERIOR
GEOLOGICAL SURVEY

TECOLOTE QUADRANGLE
NEW MEXICO-SAN MIGUEL CO.
7.5 MINUTE SERIES (TOPOGRAPHIC)

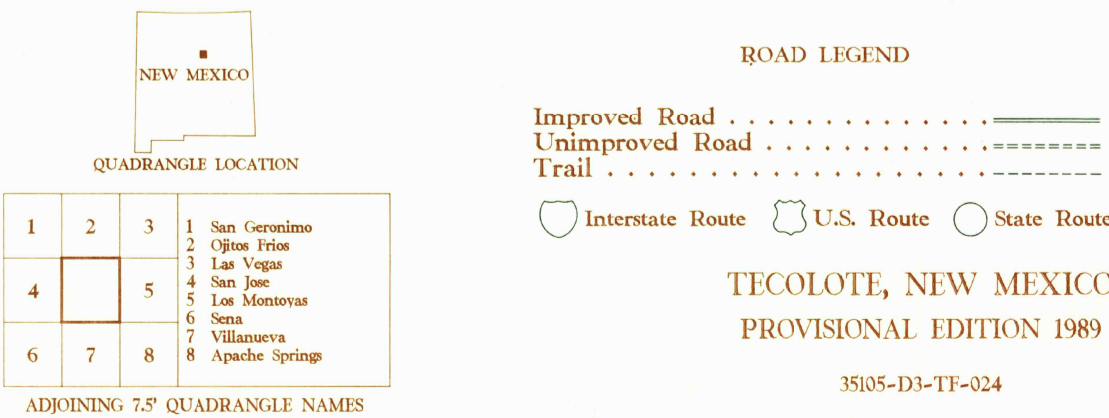


PRODUCED BY THE UNITED STATES GEOLOGICAL SURVEY
CONTROL BY USGS, NOS/NOAA AND N. MEX HWY COMMISSION
COMPILED FROM AERIAL PHOTOGRAPHS TAKEN 1963
FIELD CHECKED 1960
LIMITED REVISION FROM AERIAL PHOTOGRAPHS TAKEN 1965
FIELD CHECKED 1966
PROJECTION TRANSVERSE MERCATOR
GRID 1000-METER UNIVERSAL TRANSVERSE MERCATOR ZONE 13
ROAD-ROOT STATE GRID TICKS NEW MEXICO, EAST ZONE
UTM GRID DECLINATION 91° WEST
1989 MAGNETIC NORTH DECLINATION 10° 30' EAST
VERTICAL DATUM NATIONAL GEODETIC VERTICAL DATUM OF 1929
HORIZONTAL DATUM 1927 NORTH AMERICAN DATUM
To place on the predicted North American Datum of 1983,
move the projection lines as shown by dashed corner ticks
(1 meter south and 49 meters east)
There may be private inholdings within the boundaries of any
Federal and State Reservations shown on this map.
No distinction made between houses, barns, and other buildings
Public Land Survey System is shown as published in 1960 and
verified or supplemented in 1986

PROVISIONAL MAP
Produced from original
manuscript drawings. Infor-
mation shown as of date of
field check.



THIS MAP COMPLIES WITH NATIONAL MAP ACCURACY STANDARDS
FOR SALE BY U.S. GEOLOGICAL SURVEY, DENVER, COLORADO 80225
OR RESTON, VIRGINIA 22092



USGS NMHD HISTORICAL MAP
NOV 28 1999
REC'D FILE COPY