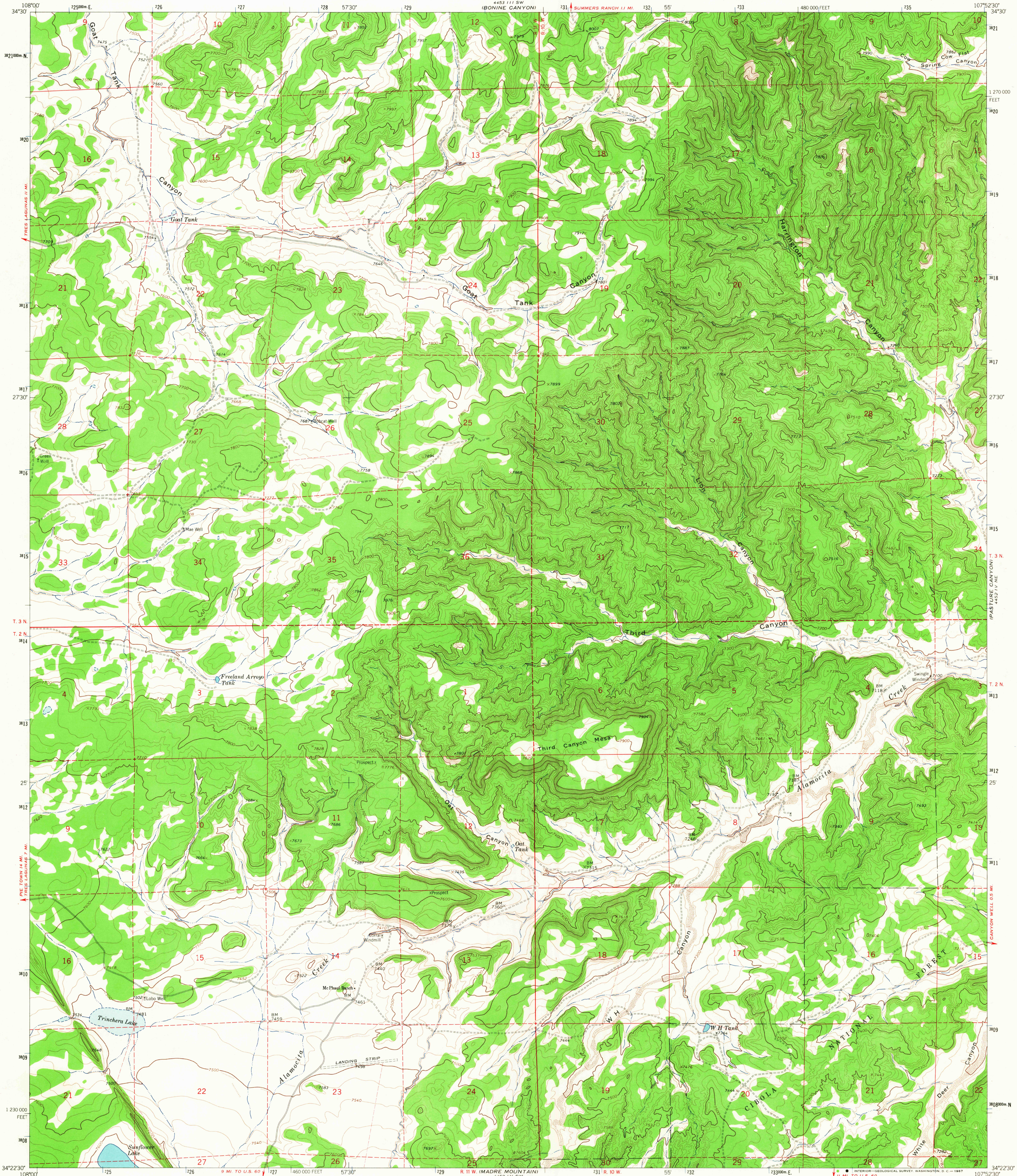
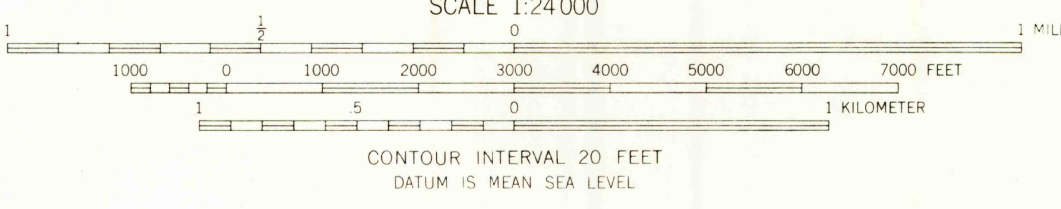
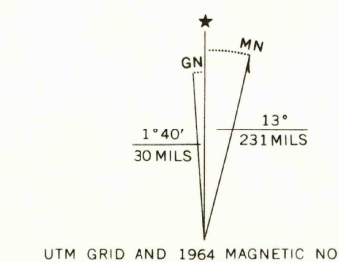


4452 IV SE  
WILD HORSE  
CANYON



Mapped, edited, and published by the Geological Survey

Control by USGS and USC&GS  
Topography by photogrammetric methods from aerial photographs taken 1963. Field checked 1964.  
Polyconic projection. 1927 North American datum. 10,000-foot grid based on New Mexico coordinate system, west zone. 1000-meter Universal Transverse Mercator grid ticks, zone 13, shown in blue.  
Fine red dashed lines indicate selected fence lines.



USGS  
Historical File  
Topographic Division

ROAD CLASSIFICATION  
Light-duty \_\_\_\_\_ Unimproved dirt - - - - -

NEW MEXICO  
QUADRANGLE LOCATION

U.S.G.S.  
FILE COPY  
TOPOGRAPHIC DIVISION

THIRD CANYON, N. MEX.  
N3422 5 - W10752 5/7 5  
1964

THIS MAP COMPLIES WITH NATIONAL MAP ACCURACY STANDARDS  
FOR SALE BY U.S. GEOLOGICAL SURVEY, DENVER, COLORADO 80225, OR WASHINGTON, D. C. 20242  
A FOLDER DESCRIBING TOPOGRAPHIC MAPS AND SYMBOLS IS AVAILABLE ON REQUEST

AMS 4452 IV NW -SERIES V881

2630  
MAY 5 1967