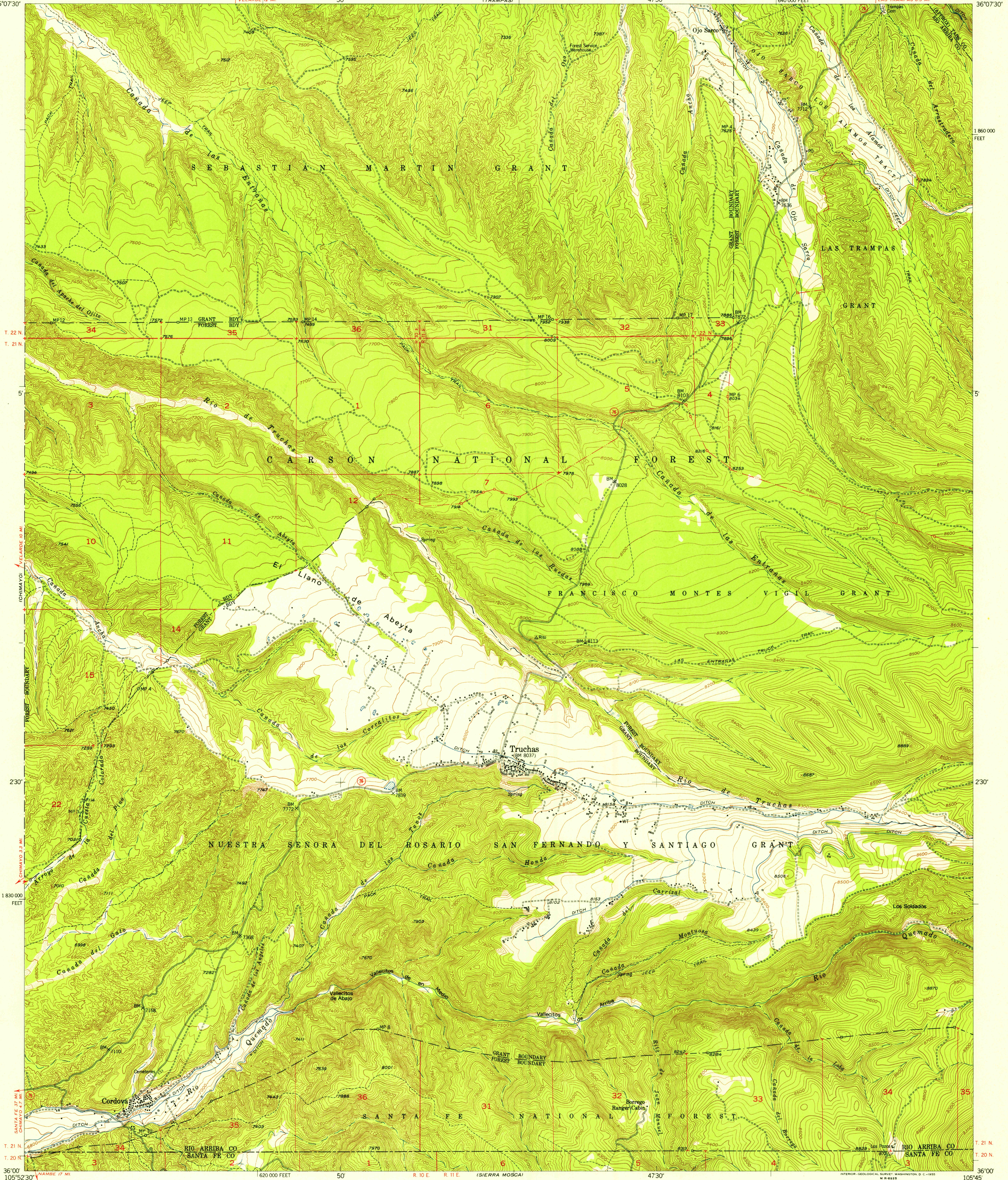
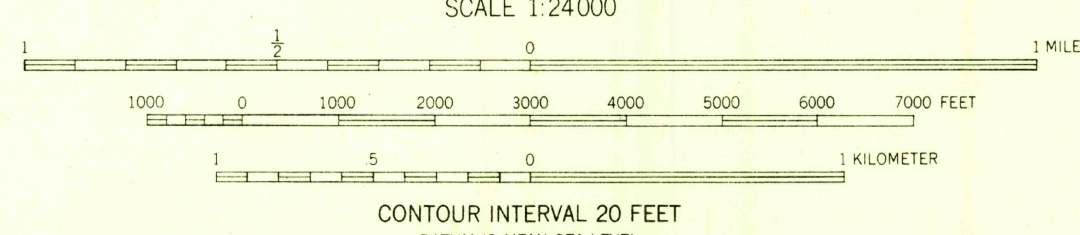
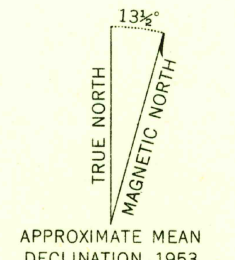


105°52'30" 36°07'30" 50 (TRAMPAS) 47'30" 640 000 FEET 105°45' 36°07'30"



Mapped, edited, and published by the Geological Survey
Control by USGS, USC&GS, and USFS
Topography from aerial photographs by multiplex methods
Aerial photographs taken 1952. Field check 1953
Polyconic projection, 1927 North American datum
10,000-foot grid based on New Mexico coordinate system,
central zone



CONTOUR INTERVAL 20 FEET
DATUM IS MEAN SEA LEVEL

THIS MAP COMPLIES WITH NATIONAL MAP ACCURACY STANDARDS
FOR SALE BY U. S. GEOLOGICAL SURVEY, FEDERAL CENTER, DENVER, COLORADO OR WASHINGTON 25, D. C.
A FOLDER DESCRIBING TOPOGRAPHIC MAPS AND SYMBOLS IS AVAILABLE ON REQUEST



ROAD CLASSIFICATION

Heavy-duty	Light-duty
Medium-duty	Unimproved dirt
U. S. Route	State Route

USGS Historical File Topographic Division U.S.G.S. FILE COPY TOPOGRAPHIC DIVISION

TRUCHAS, N. MEX.
N3600-W10545/7.5
1953