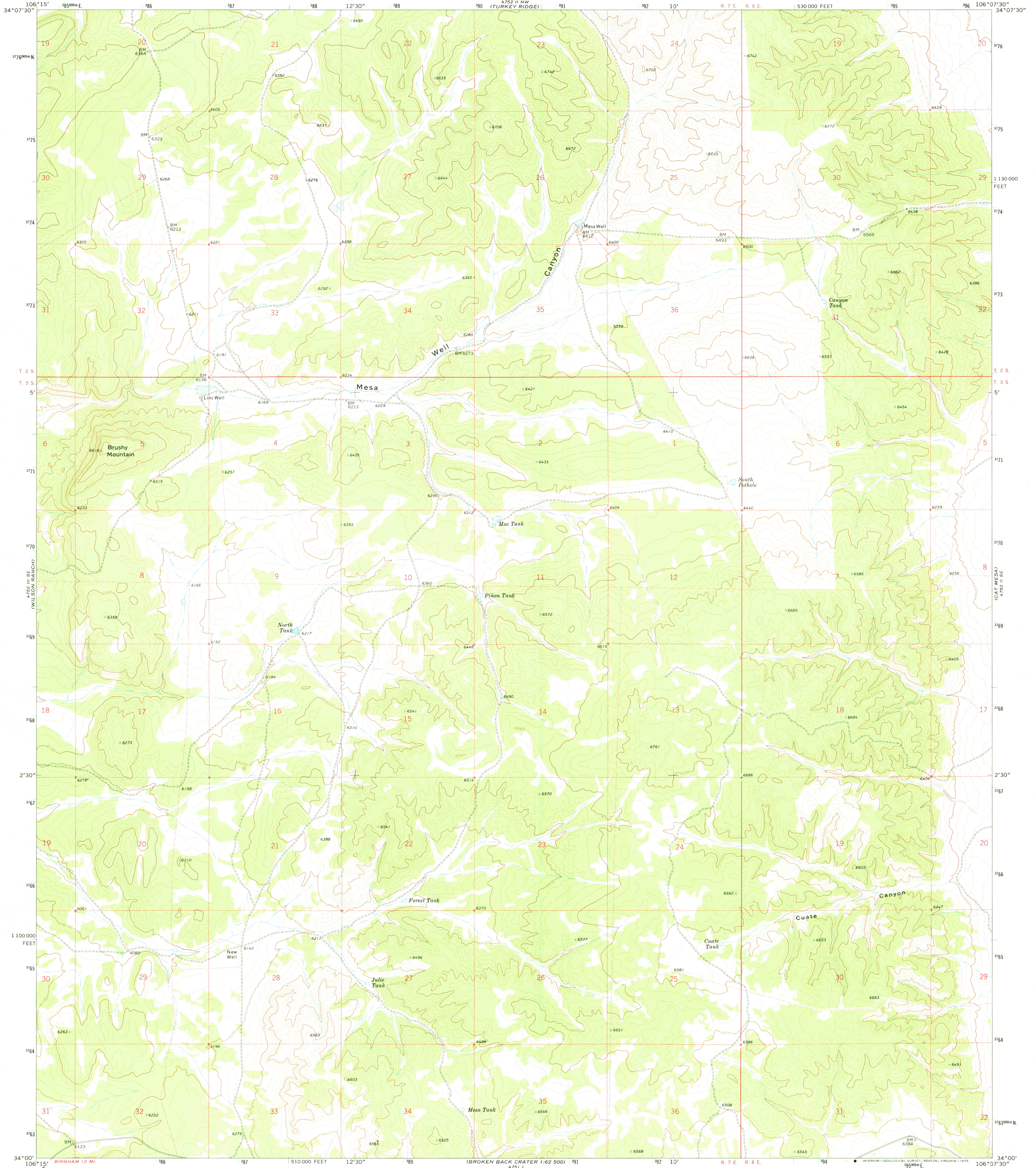


CHAPARRAL  
COPPER  
SPRING

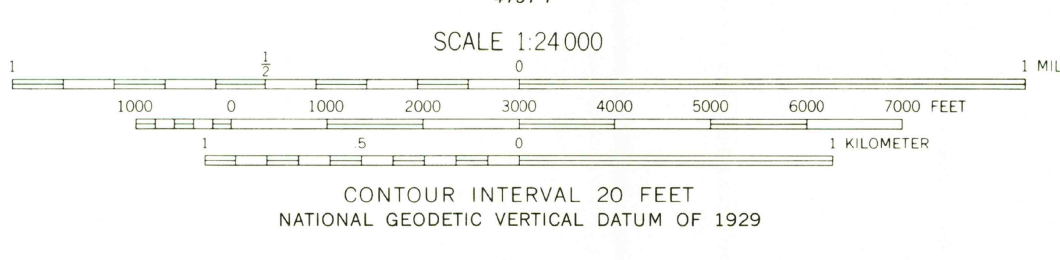
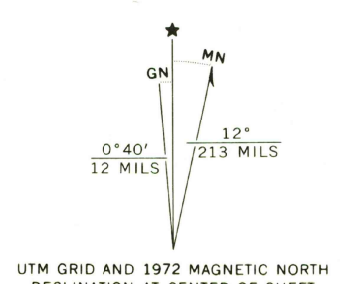
UNITED STATES  
DEPARTMENT OF THE INTERIOR  
GEOLOGICAL SURVEY

TURKEY RIDGE SW QUADRANGLE  
NEW MEXICO—SOCORRO CO.  
7.5 MINUTE SERIES (TOPOGRAPHIC)

TURKEY RIDGE  
NE



Mapped, edited, and published by the Geological Survey  
Control by USGS and USC&GS  
Topography by photogrammetric methods from aerial  
photographs taken 1971. Field checked 1972  
Projection and 10,000-foot grid ticks: New Mexico  
coordinate system, central zone (transverse Mercator)  
1000-meter Universal Transverse Mercator grid ticks,  
zone 13, shown in blue. 1927 North American datum  
Fine red dashed lines indicate selected fence lines



ROAD CLASSIFICATION

Primary highway, hard surface	Light-duty road, hard or improved surface
Secondary highway, hard surface	Unimproved road
Interstate Route	U. S. Route
	State Route

CONTOUR INTERVAL 20 FEET  
NATIONAL GEODETIC VERTICAL DATUM OF 1929

TURKEY RIDGE SW, N. MEX.  
N3400-W10607.5/7.5

1972

AMS 4752 II SW—SERIES V881

1975

BINGHAM 162 5000  
1975 IV

BROKEN BACK CRATER  
162 5000  
1975 IV

THIS MAP COMPLIES WITH NATIONAL MAP ACCURACY STANDARDS  
FOR SALE BY U. S. GEOLOGICAL SURVEY, DENVER, COLORADO 80225 OR RESTON, VIRGINIA 22092  
A FOLDER DESCRIBING TOPOGRAPHIC MAPS AND SYMBOLS IS AVAILABLE ON REQUEST

USGS  
Historical File  
Topographic Division