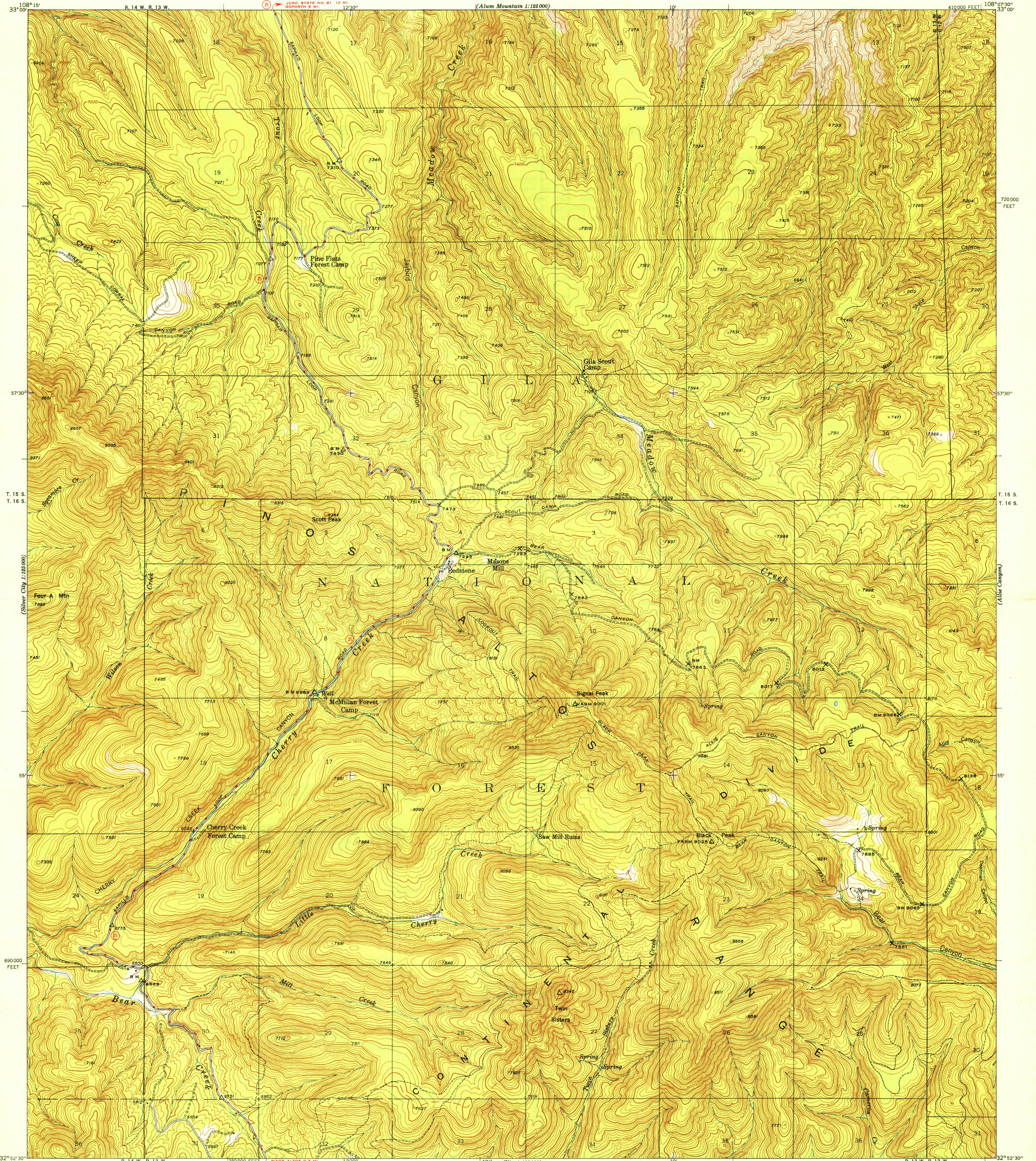


U. S. G. S.
FILE COPY
Inspection and Editing.

UNITED STATES
DEPARTMENT OF THE INTERIOR
GEOLOGICAL SURVEY

NEW MEXICO
(GRANT COUNTY)
TWIN SISTERS QUADRANGLE
7 1/2-MINUTE SERIES



Mapped by the Geological Survey
1947

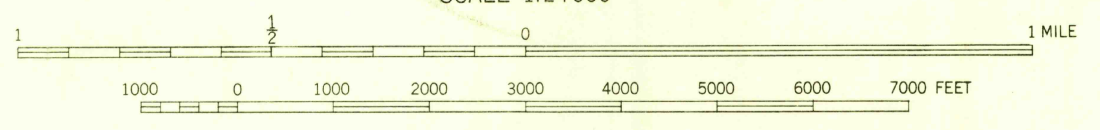
SCALE 1:24,000

Polyconic projection. 1927 North American datum
10000 foot grid based on New Mexico (West)
rectangular coordinate system

ROAD CLASSIFICATION
Dependable hard surface
Secondary hard surface
at weather road
More than two lanes indicated along road with tick at point of change

U. S. Route
State Route

TRUE NORTH
MAGNETIC NORTH
APPROXIMATE MEAN
DECLINATION, 1947



Contour interval 25 feet
Datum is mean sea level

USGS
Historical File
Topographic Division
U. S. G. S.
FILE COPY
Inspection and Editing.

TWIN SISTERS, N. MEX.
Edition of 1948

N 3252.5-W 10807.5/7.5

MAY 26 1948

210