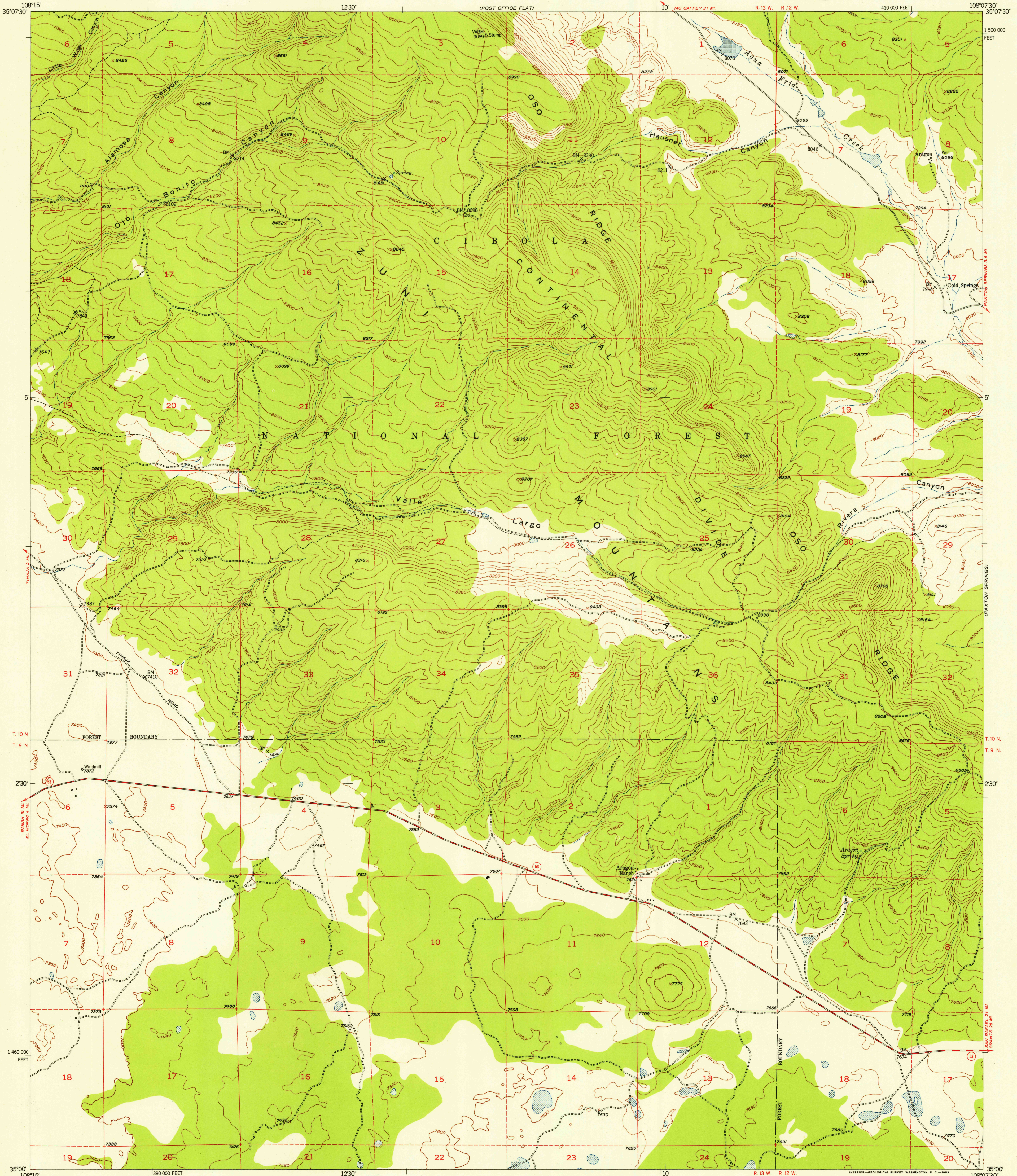
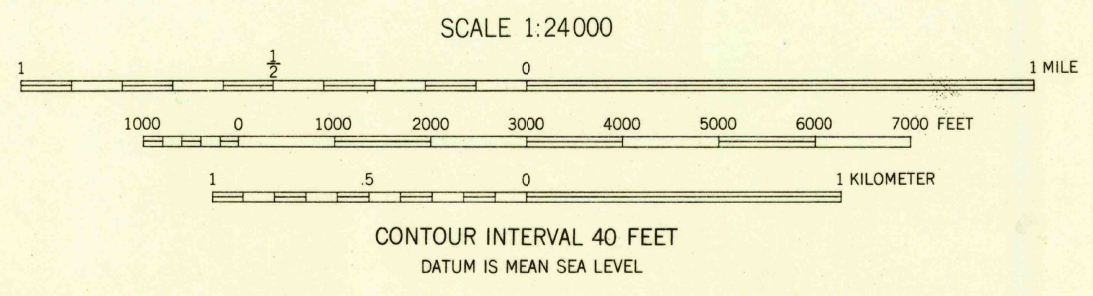
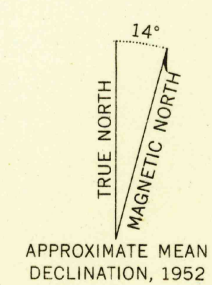


UNT. SED. B.W.K.



Mapped, edited, and published by the Geological Survey  
Control by USGS and USC&GS  
Topography from aerial photographs by multiplex methods  
Aerial photographs taken 1945. Field check 1952  
Polyconic projection. 1927 North American datum  
10,000-foot grid based on New Mexico coordinate system,  
west zone  
Dashed land lines indicate approximate locations



ROAD CLASSIFICATION

Heavy-duty	4 LANE 16 LANE	Light-duty
Medium-duty	4 LANE 16 LANE	Unimproved dirt
U. S. Route		State Route



USGS  
Historical File  
Topographic Division  
FILE COPY  
Inspection and Editing

VALLE LARGO, N. MEX.  
N3500-W10807.5/7.5  
1952

THIS MAP COMPLIES WITH NATIONAL MAP ACCURACY STANDARDS  
FOR SALE BY U. S. GEOLOGICAL SURVEY, FEDERAL CENTER, DENVER, COLORADO OR WASHINGTON 25, D. C.  
A FOLDER DESCRIBING TOPOGRAPHIC MAPS AND SYMBOLS IS AVAILABLE ON REQUEST